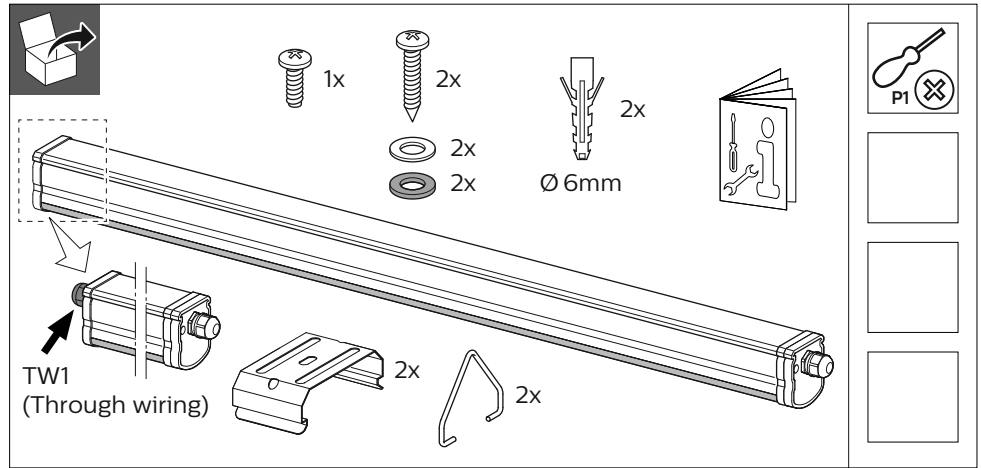


PHILIPS

Ledinaire Waterproof

WT060C



50Hz
60Hz

220V
240V

LIFE
L70B50
30K hrs

IP65

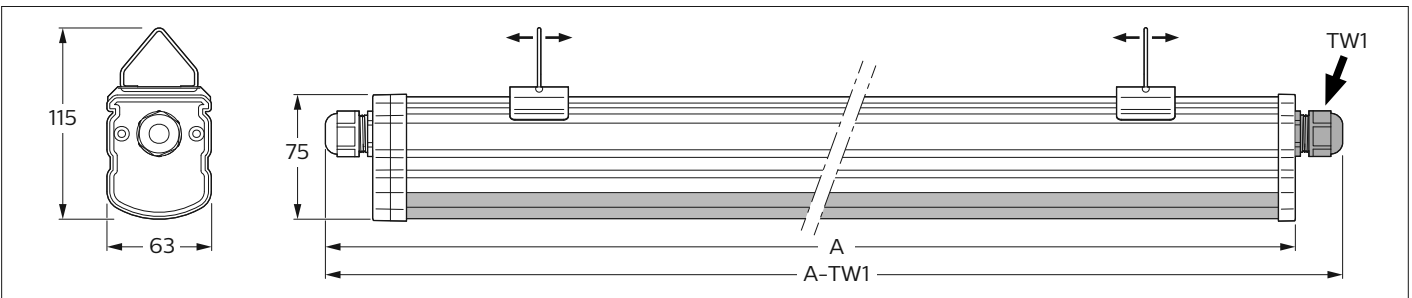
IK08

Ta
30 °C
-20 °C

GLOW
WIRE
850 °C

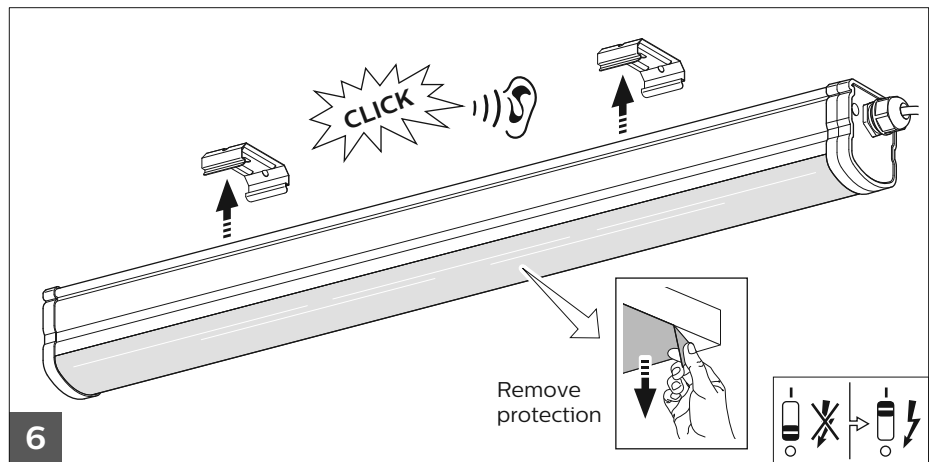
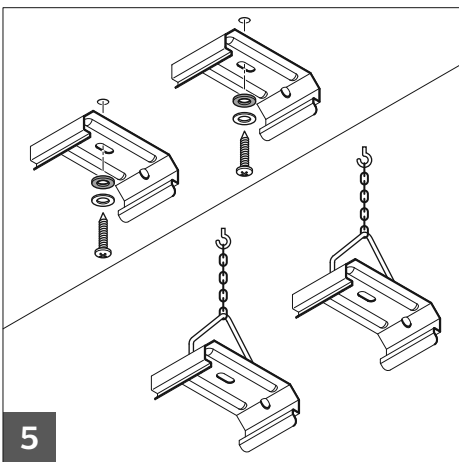
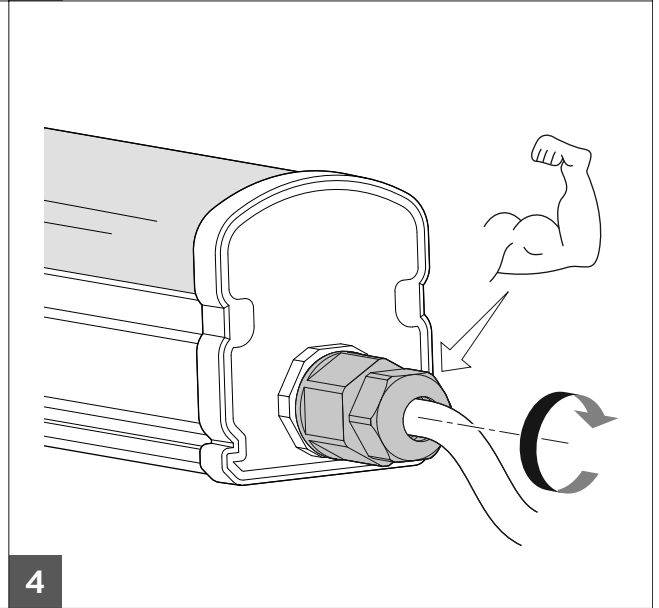
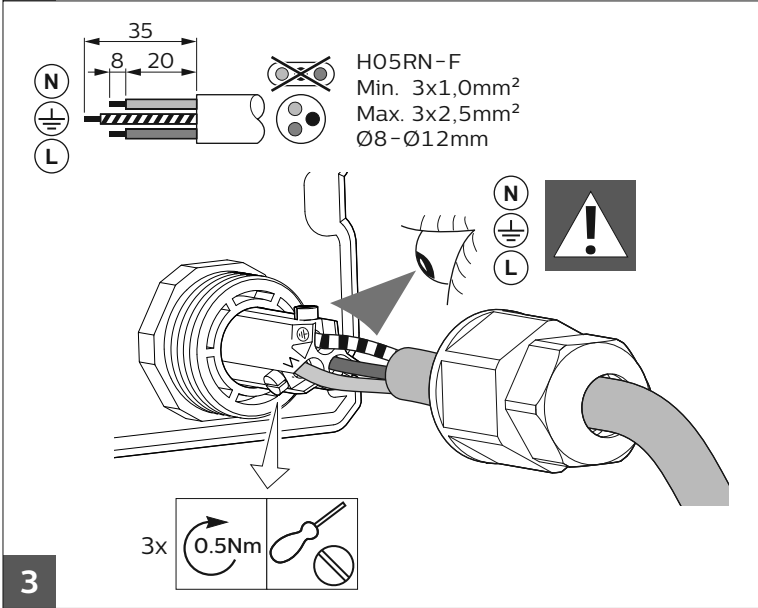
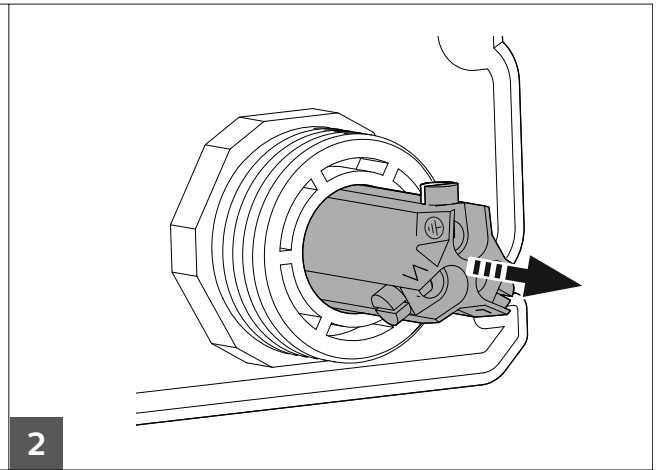
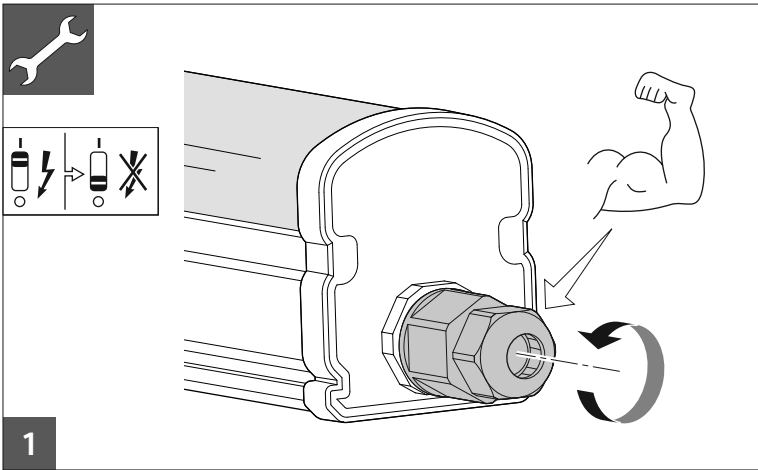


| | | System lumen (Lm) | CCT | Driver | P(W) | A | A-TW1 | |
|---------------------------------|---|-------------------|-------|--------|------|------|-------|-----|
| WT060C LED18S/840 PSU L600 | - | 1800 | | | 19 | 650 | | 0.7 |
| WT060C LED18S/840 PSU TW1 L600 | • | | | | | | 675 | |
| WT060C LED36S/840 PSU L1200 | - | 3600 | 4000K | PSU | 36 | 1250 | | 1.1 |
| WT060C LED36S/840 PSU TW1 L1200 | • | | | | | | 1275 | |
| WT060C LED56S/840 PSU L1500 | - | 5600 | | | 56 | 1550 | | 1.3 |
| WT060C LED56S/840 PSU TW1 L1500 | • | | | | | | 1575 | |



- The luminaire shall be installed by a qualified electrician and wired in accordance with the latest IEE electrical regulations or the national requirements.
- LED board & led driver are not serviceable and not replaceable.

ATTENTION
OBSERVE PRECAUTIONS
FOR HANDLING
ELECTROSTATIC
SENSITIVE
DEVICES



Inrush current

| | LED18S | LED36S | LED56S |
|----------------------------|-------------------------------------|--------|--------|
| Electrical characteristics | | | |
| Inom (mA) | 290 | 290 | 370 |
| I _{max} (A) | 8 | 8 | 8 |
| Tref (μs) | 60 | 60 | 60 |
| MCB | Max. number of connected Luminaires | | |
| B-10 A | 15 | 15 | 15 |
| B-16 A | 24 | 24 | 24 |
| C-10 A | 24 | 24 | 24 |
| C-16 A | 40 | 40 | 40 |