

# Mark 10 Powerline

## MARK 10 POWERLINE ELE DIM BALLAST (1) 42W CFL (4-PIN) 120V

For companies looking to make their fixed-output linear T8, 4-pin CFL, and T5/HO fluorescent systems more cost effective and sustainable, Mark 10 Powerline ballasts provide an easy solution without the need for additional control leads. Simply, (1) replace the ballast, (2) replace the switch, (3) dim the lights, that is all it takes. It's that easy to bring the convenience and flexibility of fluorescent dimming to conference rooms, private offices, auditoriums, architectural cove lighting – anywhere dimming is required.

### Product data

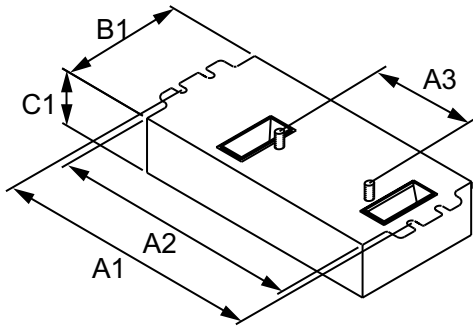
General Information		Input Power (Max)	49 W
Lamp Type	CFTR42W/GX24Q	Input Power (Min)	10 W
Number of Lamps	1 piece/unit	Rated Lamp Power	42 W
Ballast Type	Dimmable Fluorescent	<b>Wiring</b>	
Base Model	REZ1T42M2BS	Color Input Terminals	Black and White
Suitable For Outdoor Use	Yes	Color Output Terminals	RED & BLU
Automatic Restart	Yes	Wire Striplength	0.375 mm
<b>Operating and Electrical</b>		Control Wire Gauge	NA
Input Voltage	120 V	Lamp Connection	Series
Input Frequency	60 Hz	Wire Length by Color	No wires
Total Harmonic Distortion USA	10 %	Wire Gauge (Nom)	18AWG mm
Ignition Method	Programmed Start	Wire Type	Solid
Crestfactor (Nom)	1.6	Remote Wiring Configuration Allowed	No
Ignition Time (Nom)	1.5 s	Tandem Wiring Configuration Allowed	No
Ballast Factor (Max)	1	Through Wiring Configuration Allowed	No
Ballast Factor (Min)	0.05	Max Ballast-Lamp Distance Remote Wiring	No Remote
Power Factor (Nom)	0.98	Max Ballast-Lamp Distance Tandem Wiring	NA
Input Current (Nom)	0.41 A	Max Ballast-Lamp Distance Through Wiring	NA

## Mark 10 Powerline

Connector Type	Poke-In
<b>Temperature</b>	
T-Case Maximum (Nom)	70 °C
<b>Mechanical and Housing</b>	
Housing Material	Metal
Housing	M2
Housing Dimensions	4.98" x 3.0" x 1.29"
<b>Approval and Application</b>	
EMC Immunity Standard	FCC Consumer
Approval Marks	CSA certificate UL certificate CEC Listing RoHS Compliant

Hum And Noise Level	A
UL Recognized	No
<b>Product Data</b>	
Order product name	MARK 10 POWERLINE ELE DIM BALLAST (1) 42W CFL (4-PIN) 120V
EAN/UPC - Product	781087114483
Order code	913700507851
Numerator - Quantity Per Pack	1
Numerator - Packs per outer box	16
Material Nr. (12NC)	913700507851
Net Weight (Piece)	0.305 kg

### Dimensional drawing



ELE DIM BALLAST (1) 42W CFL (4-PIN) 120V

Product	A1	A2	A3	B1	C1
MARK 10 POWERLINE ELE DIM BALLAST (1) 42W CFL (4-PIN) 120V	4.55 in	4.20 in	2.00 in	3.00 in	1.29 in

