

SmartMate

SMARTMATE ELE BALLAST (2) 42W CFL (4-PIN) 120-277V

Offering maximum versatility, the Philips Advance family of SmartMate ballasts for 4-pin compact fluorescent lamps drive a broad range of quad and triple-tube, circline, 2D, and long twin-tube lamps. SmartMate ballasts' energy efficient design, compact and lightweight housing, and user-friendly features make these ballasts an ideal choice for fixture manufacturers, retrofitters, and MRO replacement.

Product data

| General Information | |
|-------------------------------|------------------------|
| Lamp Type | CFTR42W/GX24Q |
| Number of Lamps | 1/2 piece/unit |
| Ballast Type | Electronic Fluorescent |
| Base Model | ICF2S4290CM2LD |
| Suitable For Outdoor Use | Yes |
| Automatic Restart | Yes |
| Operating and Electrical | |
| Input Voltage | 120 to 277 V |
| Input Frequency | 50 to 60 Hz |
| Total Harmonic Distortion USA | 10 % |
| Ignition Method | Programmed Start |
| Crestfactor (Nom) | 1.5 |
| Ignition Time (Nom) | 1.5 s |
| Ballast Factor (Nom) | 0.97 |
| Power Factor (Nom) | 0.98 |
| Input Current (Max) | 0.78 A |
| Input Current (Min) | 0.78 A |
| Input Power (Nom) | 93-93 W |

| Rated Lamp Power | 42 W |
|--|----------------------|
| Wiring | |
| Color Input Terminals | Black and White |
| Color Output Terminals | RED, YEL & BLU |
| Wire Striplength | 0.375 mm |
| Lamp Connection | Series |
| Wire Length by Color | No wires |
| Wire Gauge (Nom) | 18AWG mm |
| Wire Type | Solid |
| Remote Wiring Configuration Allowed | Yes |
| Tandem Wiring Configuration Allowed | Yes |
| Through Wiring Configuration Allowed | Yes |
| Max Ballast-Lamp Distance Remote Wiring | 1-L = 15' / 2-L = 6' |
| Max Ballast-Lamp Distance Tandem Wiring | 2-L: Red = 6' |
| Max Ballast-Lamp Distance Through Wiring | 2-L: Red = 6' |
| Connector Type | Poke-In |
| Temperature | |
| T-Case Maximum (Nom) | 90 °C |

Mechanical and Housing

| | |
|--------------------|----------------------|
| Housing Material | Metal |
| Housing | M2 |
| Housing Dimensions | 4.98" x 3.0" x 1.29" |

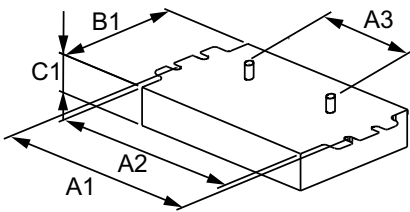
Approval and Application

| | |
|-----------------------|--|
| EMC Immunity Standard | FCC Non-Consumer |
| Approval Marks | CSA certificate UL certificate CEC Listing RoHS Compliant |
| Hum And Noise Level | A |
| UL Recognized | No |

Product Data

| | |
|---------------------------------|---|
| Full product code | 978108708299700 |
| Order product name | SMARTMATE ELE BALLAST (2) 42W CFL (4-PIN) 120-277V |
| EAN/UPC - Product | 781087043981 |
| Order code | 913710262302 |
| Numerator - Quantity Per Pack | 1 |
| Numerator - Packs per outer box | 20 |
| Material Nr. (12NC) | 913710262302 |
| Net Weight (Piece) | 0.373 kg |

Dimensional drawing



Studs for -BS models only
-LD models do not have
mounting studs

ELE BALLAST (2) 42W CFL (4-PIN) 120-277V

| Product | A1 | A2 | A3 | B1 | C1 |
|---|---------|---------|---------|---------|---------|
| SMARTMATE ELE BALLAST (2) 42W CFL (4-PIN) 120-277V | 4.55 in | 4.20 in | 2.00 in | 3.00 in | 1.29 in |

