



EU Declaration of Conformity

Document No.: 0037/A/LVD

Year in which CE Mark was first affixed: 19

Manufacturer: Signify

I.B.R.S./C.C.R.I./Numero 10461
5600 VB Eindhoven, The Netherlands

This declaration of conformity is issued under the sole responsibility of the manufacturer.

Product Range:	NAME: TownGuide family - see annex DESCRIPTION: Luminaires for road and street lighting
Product Code:	BDP001/002/100/102/103/104/105 ...-series 220-240V 50/60Hz PF>0.9 IP66 IK10 class I/classII 35°C

The designated products are in conformity with the following Union harmonization legislation and with the applicable requirements of the following harmonized standards and technical specifications:

Low Voltage Directive (LVD), 2014/35/EU

- EN60598-1:2015+A1+A2
- EN 60598-2-3:2003 + A1:2011+AC:2005
- EN 62493:2015

Electromagnetic compatibility Directive (EMC), 2014/30/EU

- EN 55015:2013
- EN 61000-3-2:2014
- EN 61000-3-3:2013
- EN 61547:2009

EcoDesign requirements for energy-related products Directive (ErP), 2009/125/EC and applicable Implementing Measures

- 1194/2012

Restriction of the use of certain Hazardous Substances in electrical and electronic equipment Directive (RoHS), 2011/65/EU

- EN 50581:2012

and are produced under a quality scheme at least in conformity with ISO 9001 or CENELEC permanent documents.

Eindhoven, 29th of January 2019

High Tech Campus 48
5656 AE Eindhoven, The Netherlands

Peter Linssen
Head of Quality
RBU Prof Europe



SIGNATURE



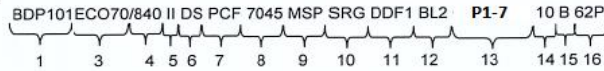
EU Declaration of Conformity

Document No.: 0037/A/LVD

ANNEX

Specification of the products:

Example:



Designations used on the marking of luminaries:

1. BDP001, BDP002, BDP100, BDP101, BDP102, BDP103, BDP104, BDP105	- Code of the series
3. ECO70/GRN70	- LED engine flux(x100) [lumen] range: from ECO20 to ECO120 and range: from GRN12 to GRN70 range: from LED12 to LED120
4. 830/840/850	- LED engine version/color – WW 2700K, 3000K, CRI>80 NW 4000K, CRI>70, CRI>80 CW 5000K, CRI>80
5. II	- Safety Class II or Class I. For Class I - no marking.
6. DS/DN/DM/DW/DRW	- Optic DS, DN, DM, DW, DRW– Road and symmetrical distribution
7. PCC/PCF/PCTR	- Bowl PCC / PCF / PCTR - Clear bowl / Frosted bowl 10% / Frosted bowl 5%
8. SI/ALU/BK/GR/GR-10714	- Standard colour - Silver Ral 9006, Aluminium Ral 9007, Black Ral 9005, Grey Ral 7035, Philips Ult Dark Grey GR-10714
8. xxxx/xx-xxxx	- RAL Colour, Colour Choice AKZO
9. MSP	- Marine salt protected coating
10. SRG10	- Surge protective device
11. CLO	- Constant lumen output
11. DDF1/DDF2/DDF3/DDF27	- DynaDimmer with fixed presets version
11. LS-6/LS-8/CM4	- DynaDimmer with fixed presets version / Lumistep 6/8 hours 50% Coded mains
11. CLO-DDF1/CLO-DDF2/CLO-DDF3/CLO-DDF27	- CLO + DynaDimmer with fixed presets version
11. CLO-LS-6/CLO-LS-8/CLO-CM4	- CLO + DynaDimmer with fixed presets version / Lumistep 6/8 hours 50% CLO + Coded mains
11. D4	- Dimming via SDU01H
11. D7	- Dimming via external communication 1-10Vdc
11. D9	- Dimming via external communication DALI
11. D11/12	- Dimming via line switch
11. D13	- Mains dimming (Ampdim)
13. P1-7	- Nema socket for photocell
14. C10K-3...C4K-3, C10K-5...C4K-5	- POWER CABLE H07 RN-F 2X1,5MM ² – 10M - 4M - POWER CABLE H07 RN-F 3X1,5MM ² – 10M - 4M - POWER CABLE H07 RN-F 5X1,5MM ² – 10M - 4M - POWER CABLE H07 RN-F 3X2,5MM ² – 10M - 4M - POWER CABLE H05 VV-F 3X1,5MM ² – 10M - 4M - POWER CABLE H05 VV-F 3X2,5MM ² – 10M - 4M - POWER CABLE H05 VV-FP 3X1,5MM ² – 10M - 4M - POWER CABLE H05 VV-FP 5X1,5MM ² – 10M - 4M - POWER CABLE H05 VV-FP 3X2,5MM ² – 10M - 4M - POWER CABLE H05 RR-F 3X1,5MM ² – 10M - 4M - POWER CABLE H05 RR-F 5X1,5MM ² – 10M - 4M - POWER CABLE H07 BQ-F 3X1,5MM ² – 10M - 4M - POWER CABLE H07 BQ-F 5X1,5MM ² – 10M - 4M - POWER CABLE H05 VV-U 3X1,5MM ² – 10M - 4M - POWER CABLE H05 VV-U 5X1,5MM ² – 10M - 4M - POWER CABLE RTR 3X1,5MM ² – 10M - 4M - POWER CABLE RTR 5X1,5MM ² – 10M - 4M - POWER CABLE FQQ 300/500V 2X1,5MM ² – 10M - 4M - POWER CABLE FQQ 300/500V 3X1,5MM ² – 10M - 4M
15. -	- Cable finish - Standard (no cable insulated)
15. B	- Protective earth wire insulated
15. L	- Protective earth wire, gray wire and black wire insulated
15. D	- Protective earth wire and gray wire insulated
16. 62P/76P/48P/90P	- Type of spigot