



Energy-efficient lighting for industrial and commercial applications

Mini500 G2

In a transparent market like petrol station, operators are under constant pressure to maintain its profitability through lower operating cost, while in the same time attracting more customer with clean and crisp station that gives comfort and safety feeling. Philips' Mini 500 LED is an intuitive undercanopy lighting that ensures optimal visual conditions while enabling huge energy savings. The luminaire's precision-control optics enables light to be distributed where it is needed the most. Its integrated components and long-life LED technology make this an easy-to-install, zero-maintenance solution.

Benefits

- Solid die-cast housing design ensures long fixture lifetime
- Increases visibility and safety at night
- Up to 60% energy saving compared to traditional high-intensity discharge lamp solutions
- Easy to install

Features

- Precision-control optics
- Wide Range of option
-
- Basic on and off - PSU
- Basic Dimmable - PSR
- Auxiliary Lamp version – PSU GU5.3
- Intelligent Version – PSD ACD2 IS
- Surface-mounted, Recessed –mounted, Side entry Pole mounted version.

Mini500 G2

Application

- Under Canopy
- Industrial low bay platform
- Area Lighting at petrol station

Versions



BBP500/BCP500/BGP500 LED110

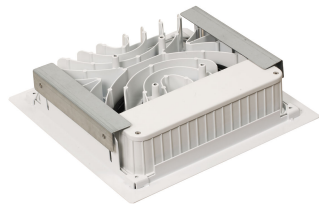


BBP500/BCP500 LED110



BBP500 LED110

Product details



BBP500 LED110



BCP500 LED110



BGP500 LED110

Application Conditions

Ambient temperature range -30 to +40 °C

Approval and Application

Mech. impact protection code IK07

Ingress protection code IP65

Operating and Electrical

Input Voltage 220-240 V

General Information

CE mark CE mark

Protection class IEC Safety class I

Optical cover/lens type Tempered glass

Driver included Yes

ENEC mark -

Flammability mark -

Gear -

Glow-wire test Temperature 650 °C, duration 30 s

Lamp family code LED120

Light source replaceable No

Number of gear units 1 unit

UL mark -

Initial Performance (IEC Compliant)

Initial chromaticity -

Init. Color Rendering Index 85

Luminous flux tolerance +/-7.5%

Initial input power 100 W

Application Conditions

Order Code	Full Product Name	Maximum dim level
911401579611	BBP500 LED110/CW PSU A-WB	Not applicable
911401580111	BBP500 LED110/CW PSU S-MB	Not applicable
911401580211	BBP500 LED110/CW PSU S-WB	Not applicable
911401580311	BCP500 LED110/NW PSU S-MB	Not applicable
911401580611	BCP500 LED110/NW PSU S-WB	Not applicable
911401581011	BCP500 LED110/CW PSU S-MB	Not applicable
911401581111	BCP500 LED110/CW PSU S-WB	Not applicable
911401581211	BCP500 LED110/NW PSU A-WB	Not applicable
911401581311	BCP500 LED110/CW PSU A-WB	Not applicable
911401581811	BCP500 LED110/CW PSR S-WB	1% (depends on dimmer, ELV)
911401581911	BCP500 LED110/CW PSR S-MB	1% (depends on dimmer, ELV)
911401582211	BCP500 LED110/NW PSR S-WB	1% (depends on dimmer, ELV)
911401582811	BCP500 LED110/CW PSR A-WB	1% (depends on dimmer, ELV)
911401583411	BGP500 LED110/CW PSU A-WB	Not applicable
911401583511	BGP500 LED110/NW PSU A-WB	Not applicable
911401583611	BBP500 LED110/NW PSU S-MB	Not applicable
911401583711	BBP500 LED110/NW PSU S-WB	Not applicable
911401583811	BBP500 LED110/NW PSU A-WB	Not applicable
911401580711	BBP500 LED110/CW PSD ACD2 IS S-WB	1% (depends on dimmer, ELV)
911401580811	BBP500 LED110/CW PSD ACD2 IS S-MB	1% (depends on dimmer, ELV)
911401582511	BCP500 LED110/NW PSD ACD2 IS S-MB	1% (depends on dimmer, ELV)
911401582611	BCP500 LED110/NW PSD ACD2 IS S-WB	1% (depends on dimmer, ELV)
911401582711	BCP500 LED110/NW PSD ACD2 IS A-WB	1% (depends on dimmer, ELV)
911401582911	BCP500 LED110/CW PSD ACD2 IS S-WB	1% (depends on dimmer, ELV)
911401583011	BBP500 LED110/NW PSD ACD2 IS A-WB	1% (depends on dimmer, ELV)
911401583111	BCP500 LED110/CW PSD ACD2 IS S-MB	1% (depends on dimmer, ELV)
911401583211	BBP500 LED110/NW PSD ACD2 IS S-MB	1% (depends on dimmer, ELV)
911401584511	BBP500 LED110/NW PSD ACD2 IS S-WB	1% (depends on dimmer, ELV)
911401580911	BBP500 LED110/CW PSD ACD2 IS A-WB	1% (depends on dimmer, ELV)

Controls and Dimming

Order Code	Full Product Name	Dimmable	Order Code	Full Product Name	Dimmable
911401579611	BBP500 LED110/CW PSU A-WB	No	911401583611	BBP500 LED110/NW PSU S-MB	No
911401580111	BBP500 LED110/CW PSU S-MB	No	911401583711	BBP500 LED110/NW PSU S-WB	No
911401580211	BBP500 LED110/CW PSU S-WB	No	911401583811	BBP500 LED110/NW PSU A-WB	No
911401580311	BCP500 LED110/NW PSU S-MB	No	911401580711	BBP500 LED110/CW PSD ACD2 IS S-WB	Yes
911401580611	BCP500 LED110/NW PSU S-WB	No	911401580811	BBP500 LED110/CW PSD ACD2 IS S-MB	Yes
911401581011	BCP500 LED110/CW PSU S-MB	No	911401582511	BCP500 LED110/NW PSD ACD2 IS S-MB	Yes
911401581111	BCP500 LED110/CW PSU S-WB	No	911401582611	BCP500 LED110/NW PSD ACD2 IS S-WB	Yes
911401581211	BCP500 LED110/NW PSU A-WB	No	911401582711	BCP500 LED110/NW PSD ACD2 IS A-WB	Yes
911401581311	BCP500 LED110/CW PSU A-WB	No	911401582911	BCP500 LED110/CW PSD ACD2 IS S-WB	Yes
911401581811	BCP500 LED110/CW PSR S-WB	-	911401583011	BBP500 LED110/NW PSD ACD2 IS A-WB	Yes
911401581911	BCP500 LED110/CW PSR S-MB	-	911401583111	BCP500 LED110/CW PSD ACD2 IS S-MB	Yes
911401582211	BCP500 LED110/NW PSR S-WB	-	911401583211	BBP500 LED110/NW PSD ACD2 IS S-MB	Yes
911401582811	BCP500 LED110/CW PSR A-WB	-	911401584511	BBP500 LED110/NW PSD ACD2 IS S-WB	Yes
911401583411	BGP500 LED110/CW PSU A-WB	No	911401580911	BBP500 LED110/CW PSD ACD2 IS A-WB	Yes
911401583511	BGP500 LED110/NW PSU A-WB	No			

General Information

Mini500 G2

Order Code	Full Product Name	Optic type
911401579611	BBP500 LED110/CW PSU A-WB	Wide beam
911401580111	BBP500 LED110/CW PSU S-MB	Medium beam
911401580211	BBP500 LED110/CW PSU S-WB	Wide beam
911401580311	BCP500 LED110/NW PSU S-MB	Medium beam
911401580611	BCP500 LED110/NW PSU S-WB	Wide beam
911401581011	BCP500 LED110/CW PSU S-MB	Medium beam
911401581111	BCP500 LED110/CW PSU S-WB	Wide beam
911401581211	BCP500 LED110/NW PSU A-WB	Wide beam
911401581311	BCP500 LED110/CW PSU A-WB	Wide beam
911401581811	BCP500 LED110/CW PSR S-WB	Wide beam
911401581911	BCP500 LED110/CW PSR S-MB	Medium beam
911401582211	BCP500 LED110/NW PSR S-WB	Wide beam
911401582811	BCP500 LED110/CW PSR A-WB	Wide beam
911401583411	BGP500 LED110/CW PSU A-WB	Wide beam
911401583511	BGP500 LED110/NW PSU A-WB	Wide beam

Order Code	Full Product Name	Optic type
911401583611	BBP500 LED110/NW PSU S-MB	Medium beam
911401583711	BBP500 LED110/NW PSU S-WB	Wide beam
911401583811	BBP500 LED110/NW PSU A-WB	Wide beam
911401580711	BBP500 LED110/CW PSD ACD2 IS S-WB	Wide beam
911401580811	BBP500 LED110/CW PSD ACD2 IS S-MB	Medium beam
911401582511	BCP500 LED110/NW PSD ACD2 IS S-MB	Medium beam
911401582611	BCP500 LED110/NW PSD ACD2 IS S-WB	Wide beam
911401582711	BCP500 LED110/NW PSD ACD2 IS A-WB	Wide beam
911401582911	BCP500 LED110/CW PSD ACD2 IS S-WB	Wide beam
911401583011	BBP500 LED110/NW PSD ACD2 IS A-WB	Wide beam
911401583111	BCP500 LED110/CW PSD ACD2 IS S-MB	Medium beam
911401583211	BBP500 LED110/NW PSD ACD2 IS S-MB	Medium beam
911401584511	BBP500 LED110/NW PSD ACD2 IS S-WB	Wide beam
911401580911	BBP500 LED110/CW PSD ACD2 IS A-WB	Wide beam

Initial Performance (IEC Compliant)

Order Code	Full Product Name	Init. Corr. Color Temperature
911401579611	BBP500 LED110/CW PSU A-WB	6500 K
911401580111	BBP500 LED110/CW PSU S-MB	6500 K
911401580211	BBP500 LED110/CW PSU S-WB	6500 K
911401580311	BCP500 LED110/NW PSU S-MB	4000 K
911401580611	BCP500 LED110/NW PSU S-WB	4000 K
911401581011	BCP500 LED110/CW PSU S-MB	6500 K
911401581111	BCP500 LED110/CW PSU S-WB	6500 K
911401581211	BCP500 LED110/NW PSU A-WB	4000 K
911401581311	BCP500 LED110/CW PSU A-WB	6500 K
911401581811	BCP500 LED110/CW PSR S-WB	6500 K
911401581911	BCP500 LED110/CW PSR S-MB	6500 K
911401582211	BCP500 LED110/NW PSR S-WB	4000 K
911401582811	BCP500 LED110/CW PSR A-WB	6500 K
911401583411	BGP500 LED110/CW PSU A-WB	6500 K
911401583511	BGP500 LED110/NW PSU A-WB	4000 K

Order Code	Full Product Name	Init. Corr. Color Temperature
911401583611	BBP500 LED110/NW PSU S-MB	4000 K
911401583711	BBP500 LED110/NW PSU S-WB	4000 K
911401583811	BBP500 LED110/NW PSU A-WB	4000 K
911401580711	BBP500 LED110/CW PSD ACD2 IS S-WB	6500 K
911401580811	BBP500 LED110/CW PSD ACD2 IS S-MB	6500 K
911401582511	BCP500 LED110/NW PSD ACD2 IS S-MB	4000 K
911401582611	BCP500 LED110/NW PSD ACD2 IS S-WB	4000 K
911401582711	BCP500 LED110/NW PSD ACD2 IS A-WB	4000 K
911401582911	BCP500 LED110/CW PSD ACD2 IS S-WB	6500 K
911401583011	BBP500 LED110/NW PSD ACD2 IS A-WB	4000 K
911401583111	BCP500 LED110/CW PSD ACD2 IS S-MB	6500 K
911401583211	BBP500 LED110/NW PSD ACD2 IS S-MB	4000 K
911401584511	BBP500 LED110/NW PSD ACD2 IS S-WB	4000 K
911401580911	BBP500 LED110/CW PSD ACD2 IS A-WB	6500 K

