



SmartBalance recessed – combining performance with smart design

SmartBalance, recessed

Many people are keen to apply recessed luminaires with a surface of light as an alternative to louver-type solutions. At the same time they expect the luminaires to be office norm-compliant as well as highly energy-efficient. Meeting all relevant office norms, SmartBalance recessed is the next step in surface-of-light recessed luminaires for the specification market. Thanks to state-of-the-art LED technology it not only offers increased energy efficiency compared with fluorescent, but is also visually appealing without being intrusive. For those looking for an exciting design element there are versions with inner masking. SmartBalance is also available in surface-mounted, suspended and free floor-standing versions.

Benefits

- Operational cost savings, including 40% saving on energy cost
- Appealing, smooth surface-of-light solution
- Office norm-compliant

Features

- Energy efficacy up to 108 lm/W (depending on type)
- UGR up to 18 / L65 up to <math>< 2300 \text{ cd/m}^2</math> (depending on type)
- Offers different geometries and ways of mounting
- Number of options to meet the needs of the specification business, e.g. DALI control and emergency lighting

SmartBalance, recessed

Application

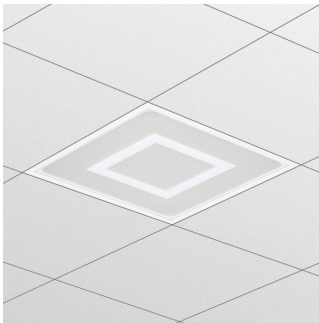
- Offices (open-plan, meeting rooms, cell offices, circulation areas)
- Healthcare
- Hospitality

Specifications

Type	RC480B (module size 600 x 600 and 300 x 1200 mm version) RC482B (module size 625 x 625 and 310 x 1250 mm version)
Ceiling type	Exposed T-bar ceiling Symmetrical concealed T-bar ceiling Plaster (board) ceiling
Ceiling grid	Module size in length: 600 mm Module size in length: 625 mm Module size in length: 1200 mm Module size in length: 1250 mm
Light source	Non-replaceable LED module
Power	32-45 W (depending on type)
Beam angle	90°
Luminous flux	3500 or 4200 lm
Correlated Color	3000 or 4000 K
Temperature	
Color Rendering Index	> 80
Median useful life L70B50	70,000 hours
Median useful life L80B50	50,000 hours
Median useful life L90B50	25,000 hours
Average ambient temperature	25 °C

Operating temperature range	+10 to +40 °C
Driver	Built-in
Mains voltage	220-240 V / 50-60 Hz
Dimming	DALI dimmable
Options	Acrylate micro-lens optic without (AC-MLO) or with (AC-MLO-R) innermasking, also referred to as "MK" Emergency lighting (integrated): 1 hour (EL1), 3 hours (EL3) ActiLume DALI gen2 (ACL)
Material	Housing: plastic or zinc-coated steel Rim: post lacquered Optics: acrylaat
Color	White (WH) Silver grey (SI)
Maintenance	Optical module sealed for file; no internal cleaning required
Installation	Exposed ceilings: in lay, no brackets needed Concealed ceilings: with bracket (reach 20-40 or 60 mm) Plaster (board) ceiling: with bracket (reach 20-40 or 60 mm)
Accessories	Bracket ZBS460 SMB (4 pcs) included for concealed and plaster (board) ceiling versions

Versions



SmartBalance recessed RC480B LED luminaire with inner masking, module size 600 (concealed profile ceiling version)



SmartBalance recessed RC480B LED luminaire, module size 300x1200 (concealed profile ceiling version)

SmartBalance, recessed

Versions



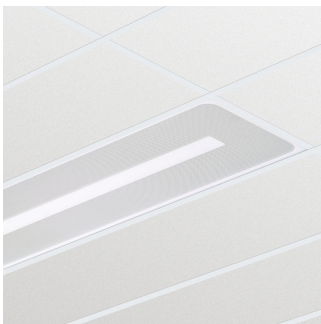
SmartBalance recessed RC480B LED luminaire with ActiLume, module size 600 (visible profile ceiling version)



SmartBalance recessed RC480B LED luminaire, module size 300x1200 (visible profile ceiling version)



SmartBalance recessed RC480B LED luminaire with inner masking, module size 600 (visible profile ceiling version)



SmartBalance recessed RC480B LED luminaire with inner masking, module size 300x1200 (visible profile ceiling version)



SmartBalance recessed RC482B LED luminaire, module size 625 (visible profile ceiling version)



SmartBalance recessed RC482B LED luminaire, module size 312.5x1250 (visible profile ceiling version)



SmartBalance recessed RC482B LED luminaire with inner masking, module size 625 (visible profile ceiling version)

SmartBalance, recessed

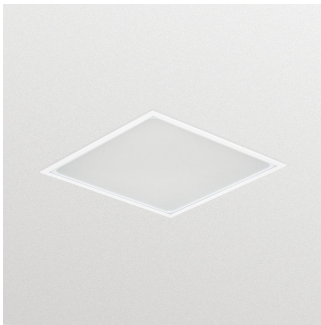
Versions



SmartBalance recessed RC480B LED luminaire, module size 600 (concealed profile ceiling version)



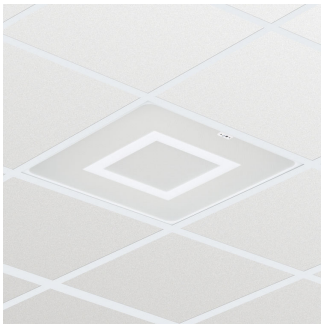
SmartBalance recessed RC482B LED luminaire, module size 625 (concealed profile ceiling version)



SmartBalance recessed RC480B LED luminaire, module size 600 (plaster ceiling version)



SmartBalance recessed RC482B LED luminaire with inner masking and ActiLume, module size 625 (visible profile ceiling version)



SmartBalance recessed RC482B LED luminaire, module size 625 (plaster ceiling version)



SmartBalance recessed RC480B LED luminaire with inner masking, module size 312.5x1250 (plaster ceiling version)

SmartBalance, recessed

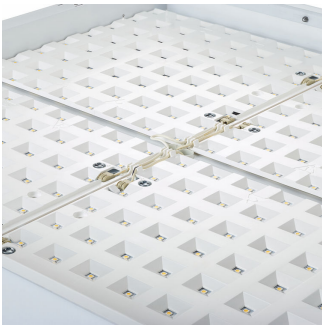
Product details



SmartBalance features rounded outer masking and a slim rim design



Inner and outer masking (AC-MLO-R)



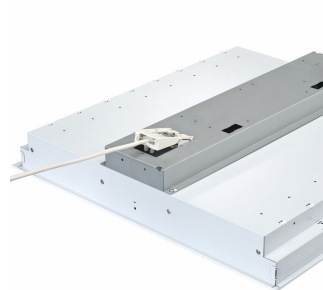
Smart LED reflector



Smart LED reflector – perpendicular view



Enables mounting in concealed grid ceiling (CPC)/plaster board ceiling (PCV)



Connectors for ease of installation



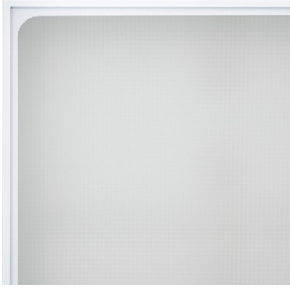
SmartBalance recessed RC482B LED luminaire with inner masking, module size 625 (concealed profile or plaster ceiling version)



SmartBalance recessed RC480B LED luminaire, module size 300x1200 (concealed profile or plaster ceiling version)

SmartBalance, recessed

Product details



SmartBalance features rounded outer masking and a slim rim design



Outer masking only (AC-MLO)



SmartBalance recessed RC480B LED luminaire, module size 600 (visible profile ceiling version)



SmartBalance recessed RC480B LED luminaire with ActiLume, module size 600 (visible profile ceiling version)



ActiLume DALI gen2 (ACL)



SmartBalance recessed RC480B LED luminaire, module size 300x1200 (visible profile ceiling version)



SmartBalance recessed RC480B LED luminaire with inner masking, module size 600 (visible profile ceiling version)



SmartBalance recessed RC480B LED luminaire with inner masking, module size 300x1200 (visible profile ceiling version)

SmartBalance, recessed

Product details



SmartBalance recessed RC482B LED luminaire, module size 625 (visible profile ceiling version)



SmartBalance recessed RC482B LED luminaire, module size 312.5x1250 (visible profile ceiling version)



SmartBalance recessed RC482B LED luminaire with inner masking, module size 625 (visible profile ceiling version)



SmartBalance recessed RC482B LED luminaire with inner masking, module size 312.5x1250 (visible profile ceiling version)



SmartBalance recessed RC480B LED luminaire, module size 600 (concealed profile or plaster ceiling version)



SmartBalance recessed RC482B LED luminaire, module size 625 (concealed profile or plaster ceiling version)



SmartBalance recessed RC482B LED luminaire with ActiLume, module size 625 (visible profile ceiling version)



SmartBalance recessed RC482B LED luminaire with inner masking and ActiLume, module size 625 (visible profile ceiling version)

SmartBalance, recessed

Product details



SmartBalance recessed RC482B LED luminaire with inner masking, module size 312.5x1250 (concealed profile or plaster ceiling version)

Application Conditions

Ambient temperature range	+10 to +40 °C
Maximum dim level	1%

Approval and Application

Mech. impact protection code	IK02
Ingress protection code	IP20

Controls and Dimming

Dimmable	Yes
----------	-----

Operating and Electrical

Input Voltage	220-240 V
---------------	-----------

General Information

CE mark	CE mark
Protection class IEC	Safety class I (I)
Driver included	Yes
Emergency lighting	No
ENEC mark	ENEC plus mark
Flammability mark	F
Glow-wire test	650/5
Light source replaceable	No
Number of gear units	1 unit
Number of light sources	1
Optic type	No
UL mark	-

Initial Performance (IEC Compliant)

Init. Colour Rendering Index	≥80
Luminous flux tolerance	+/-10%

Mechanical and Housing

Colour	White
--------	-------

Application Conditions

Order Code	Full Product Name	Suitable for random switching
27608100	RC480B LED35S/840 PSD W60L60 CPC MK PIP	Yes (relates to presence/ movement detection and daylight harvesting)
27610400	RC480B LED42S/840 PSD W30L120 CPC W	Yes (relates to presence/ movement detection and daylight harvesting)
10298300	RC480B LED35S/840 PSD W60L60 VPC W	Yes (relates to presence/ movement detection and daylight harvesting)
10299000	RC480B LED35S/840 PSD W60L60 VPC PIP	Yes (relates to presence/ movement detection and daylight harvesting)
10300300	RC480B LED35S/840 PSD W60L60 VPC ACL W	Yes (relates to presence/ movement detection and daylight harvesting)
10302700	RC480B LED35S/840 PSD W30L120 VPC PIP	Yes (relates to presence/ movement detection and daylight harvesting)
10303400	RC480B LED35S/840 PSD W60L60 VPC MK PIP	Yes (relates to presence/ movement detection and daylight harvesting)
10388100	RC480B LED35S/840 PSD W60L60 VPC MK W	Yes (relates to presence/ movement detection and daylight harvesting)
10304100	RC480B LED35S/840 PSD W30L120 VPC MK PIP	Yes (relates to presence/ movement detection and daylight harvesting)
10389800	RC480B LED35S/840 PSD W30L120 VPC MK W	Yes (relates to presence/ movement detection and daylight harvesting)
10305800	RC482B LED35S/840 PSD W62L62 VPC PIP	No
10368300	RC482B LED42S/840 PSD W62L62 VPC W	No
10403100	RC482B LED42S/840 PSD W62L62 VPC PIP	No
10404800	RC482B LED35S/830 PSD W62L62 VPC PIP	No
10405500	RC482B LED42S/830 PSD W62L62 VPC PIP	No
10306500	RC482B LED35S/840 PSD W31L125 VPC PIP	No
10399700	RC482B LED42S/840 PSD W31L125 VPC W	Yes (relates to presence/ movement detection and daylight harvesting)
10307200	RC482B LED35S/840 PSD W62L62 VPC MK PIP	Yes (relates to presence/ movement detection and daylight harvesting)
10371300	RC482B LED35S/840 PSD W62L62 VPC MK W	Yes (relates to presence/ movement detection and daylight harvesting)
10309600	RC480B LED35S/840 PSD W60L60 CPC PIP	Yes (relates to presence/ movement detection and daylight harvesting)
10390400	RC480B LED35S/840 PSD W60L60 CPC W	Yes (relates to presence/ movement detection and daylight harvesting)

Order Code	Full Product Name	Suitable for random switching
10310200	RC482B LED35S/840 PSD W62L62 CPC PIP	Yes (relates to presence/ movement detection and daylight harvesting)
10343000	RC480B LED35S/840 PSD W60L60 PCV PIP	Yes (relates to presence/ movement detection and daylight harvesting)
10374400	RC482B LED42S/840 PSD W62L62 VPC ACL W	Yes (relates to presence/ movement detection and daylight harvesting)
10408600	RC482B LED42S/840 PSD-T W62L62 VPC ACL P	Yes (relates to presence/ movement detection and daylight harvesting)
10375100	RC482B LED35S/840 PSD W62L62 VPC MK ACL	Yes (relates to presence/ movement detection and daylight harvesting)
10409300	RC482B LED35S/840 PSD-T W62L62 VPC MK AC	Yes (relates to presence/ movement detection and daylight harvesting)
10423900	RC482B LED35S/840 PSD W62L62 PCV W	Yes (relates to presence/ movement detection and daylight harvesting)
10424600	RC482B LED42S/840 PSD W62L62 PCV W	No
10425300	RC482B LED35S/830 PSD W62L62 PCV W	No
10426000	RC482B LED42S/830 PSD W62L62 PCV W	No
10440600	RC482B LED42S/840 PSD W62L62 PCV ACL W	Yes (relates to presence/ movement detection and daylight harvesting)
10433800	RC482B LED35S/840 PSD W31L125 PCV MK W	No

General Information (1/2)

Order Code	Full Product Name	Cap-Base	Optical cover/lens type	Lamp family code	Embedded control
27608100	RC480B LED35S/840 PSD W60L60 CPC MK PIP	-	AC-MLO-R	LED35S	No
27610400	RC480B LED42S/840 PSD W30L120 CPC W	-	AC-MLO	LED42S	No
10298300	RC480B LED35S/840 PSD W60L60 VPC W	-	AC-MLO	LED35S	No
10299000	RC480B LED35S/840 PSD W60L60 VPC PIP	-	AC-MLO	LED35S	No
10300300	RC480B LED35S/840 PSD W60L60 VPC ACL W	-	AC-MLO	LED35S	ACL
10302700	RC480B LED35S/840 PSD W30L120 VPC PIP	-	AC-MLO	LED35S	No
10303400	RC480B LED35S/840 PSD W60L60 VPC MK PIP	-	AC-MLO-R	LED35S	No
10388100	RC480B LED35S/840 PSD W60L60 VPC MK W	-	AC-MLO-R	LED35S	No
10304100	RC480B LED35S/840 PSD W30L120 VPC MK PIP	-	AC-MLO-R	LED35S	No
10389800	RC480B LED35S/840 PSD W30L120 VPC MK W	-	AC-MLO-R	LED35S	No
10305800	RC482B LED35S/840 PSD W62L62 VPC PIP	-	AC-MLO	LED35S	No
10368300	RC482B LED42S/840 PSD W62L62 VPC W	-	AC-MLO	LED42S	No
10403100	RC482B LED42S/840 PSD W62L62 VPC PIP	-	AC-MLO	LED42S	No

Order Code	Full Product Name	Cap-Base	Optical cover/lens type	Lamp family code	Embedded control
10404800	RC482B LED35S/830 PSD W62L62 VPC PIP	-	AC-MLO	LED35S	No
10405500	RC482B LED42S/830 PSD W62L62 VPC PIP	-	AC-MLO	LED42S	No
10306500	RC482B LED35S/840 PSD W31L125 VPC PIP	-	AC-MLO	LED35S	No
10399700	RC482B LED42S/840 PSD W31L125 VPC W	-	AC-MLO	LED42S	No
10307200	RC482B LED35S/840 PSD W62L62 VPC MK PIP	-	AC-MLO-R	LED35S	No
10371300	RC482B LED35S/840 PSD W62L62 VPC MK W	-	AC-MLO-R	LED35S	No
10309600	RC480B LED35S/840 PSD W60L60 CPC PIP	-	AC-MLO	LED35S	No
10390400	RC480B LED35S/840 PSD W60L60 CPC W	-	AC-MLO	LED35S	No
10310200	RC482B LED35S/840 PSD W62L62 CPC PIP	-	AC-MLO	LED35S	No
10343000	RC480B LED35S/840 PSD W60L60 PCV PIP	-	AC-MLO	LED35S	No
10374400	RC482B LED42S/840 PSD W62L62 VPC ACL W	-	AC-MLO	LED42S	ACL
10408600	RC482B LED42S/840 PSD-T W62L62 VPC ACL P	-	AC-MLO	LED42S	ACL
10375100	RC482B LED35S/840 PSD W62L62 VPC MK ACL	-	AC-MLO-R	LED35S	ACL

Order Code	Full Product Name	Cap-Base	Optical cover/lens type	Lamp family code	Embedded control
10409300	RC482B LED35S/840 PSD-T W62L62 VPC MK AC	-	AC-MLO-R	LED35S	ACL
10423900	RC482B LED35S/840 PSD W62L62 PCV W	-	AC-MLO	LED35S	No
10424600	RC482B LED42S/840 PSD W62L62 PCV W	-	AC-MLO	LED42S	No
10425300	RC482B LED35S/830 PSD W62L62 PCV W	-	AC-MLO	LED35S	No

Order Code	Full Product Name	Cap-Base	Optical cover/lens type	Lamp family code	Embedded control
10426000	RC482B LED42S/830 PSD W62L62 PCV W	-	AC-MLO	LED42S	No
10440600	RC482B LED42S/840 PSD W62L62 PCV ACL W	-	AC-MLO	LED42S	ACL
10433800	RC482B LED35S/840 PSD W31L125 PCV MK W	-	AC-MLO-R	LED35S	No

General Information (2/2)

Order Code	Full Product Name	Optical element	Product Family Code
27608100	RC480B LED35S/840 PSD W60L60 CPC MK PIP	MK	RC480B
27610400	RC480B LED42S/840 PSD W30L120 CPC W	No	RC480B
10298300	RC480B LED35S/840 PSD W60L60 VPC W	No	RC480B
10299000	RC480B LED35S/840 PSD W60L60 VPC PIP	No	RC480B
10300300	RC480B LED35S/840 PSD W60L60 VPC ACL W	No	RC480B
10302700	RC480B LED35S/840 PSD W30L120 VPC PIP	No	RC480B
10303400	RC480B LED35S/840 PSD W60L60 VPC MK PIP	MK	RC480B
10388100	RC480B LED35S/840 PSD W60L60 VPC MK W	MK	RC480B
10304100	RC480B LED35S/840 PSD W30L120 VPC MK PIP	MK	RC480B
10389800	RC480B LED35S/840 PSD W30L120 VPC MK W	MK	RC480B
10305800	RC482B LED35S/840 PSD W62L62 VPC PIP	No	RC482B
10368300	RC482B LED42S/840 PSD W62L62 VPC W	No	RC482B
10403100	RC482B LED42S/840 PSD W62L62 VPC PIP	No	RC482B
10404800	RC482B LED35S/830 PSD W62L62 VPC PIP	No	RC482B
10405500	RC482B LED42S/830 PSD W62L62 VPC PIP	No	RC482B
10306500	RC482B LED35S/840 PSD W31L125 VPC PIP	No	RC482B
10399700	RC482B LED42S/840 PSD W31L125 VPC W	No	RC482B

Order Code	Full Product Name	Optical element	Product Family Code
10307200	RC482B LED35S/840 PSD W62L62 VPC MK PIP	MK	RC482B
10371300	RC482B LED35S/840 PSD W62L62 VPC MK W	MK	RC482B
10309600	RC480B LED35S/840 PSD W60L60 CPC PIP	No	RC482B
10390400	RC480B LED35S/840 PSD W60L60 CPC W	No	RC480B
10310200	RC482B LED35S/840 PSD W62L62 CPC PIP	No	RC482B
10343000	RC480B LED35S/840 PSD W60L60 PCV PIP	No	RC480B
10374400	RC482B LED42S/840 PSD W62L62 VPC ACL W	No	RC482B
10408600	RC482B LED42S/840 PSD-T W62L62 VPC ACL P	No	RC482B
10375100	RC482B LED35S/840 PSD W62L62 VPC MK ACL	MK	RC482B
10409300	RC482B LED35S/840 PSD-T W62L62 VPC MK AC	MK	RC482B
10423900	RC482B LED35S/840 PSD W62L62 PCV W	No	RC482B
10424600	RC482B LED42S/840 PSD W62L62 PCV W	No	RC482B
10425300	RC482B LED35S/830 PSD W62L62 PCV W	No	RC482B
10426000	RC482B LED42S/830 PSD W62L62 PCV W	No	RC482B
10440600	RC482B LED42S/840 PSD W62L62 PCV ACL W	No	RC482B
10433800	RC482B LED35S/840 PSD W31L125 PCV MK W	MK	RC482B

Initial Performance (IEC Compliant) (1/2)

Order Code	Full Product Name	Initial chromaticity	Init. Corr. Colour Temperature	Initial LED luminaire efficacy	Initial luminous flux
27608100	RC480B LED35S/840 PSD W60L60 CPC MK PIP	(0.38, 0.38) SDCM <3	4000 K	101 lm/W	3500 lm
27610400	RC480B LED42S/840 PSD W30L120 CPC W	(0.38, 0.38) SDCM <3	4000 K	111 lm/W	4200 lm
10298300	RC480B LED35S/840 PSD W60L60 VPC W	(0.38, 0.38) SDCM <3	4000 K	123 lm/W	3500 lm

Order Code	Full Product Name	Initial chromaticity	Init. Corr. Colour Temperature	Initial LED luminaire efficacy	Initial luminous flux
10299000	RC480B LED35S/840 PSD W60L60 VPC PIP	(0.38, 0.38) SDCM <3	4000 K	123 lm/W	3500 lm
10300300	RC480B LED35S/840 PSD W60L60 VPC ACL W	(0.38, 0.38) SDCM <3	4000 K	119 lm/W	3500 lm
10302700	RC480B LED35S/840 PSD W30L120 VPC PIP	(0.38, 0.38) SDCM <3	4000 K	117 lm/W	3500 lm
10303400	RC480B LED35S/840 PSD	(0.38, 0.38) SDCM <3	4000 K	108 lm/W	3500 lm

SmartBalance, recessed

Order Code	Full Product Name	Initial chromaticity	Init. Corr. Colour Temperature	Initial LED luminaire efficacy	Initial luminous flux
	W60L60 VPC MK PIP				
10388100	RC480B LED35S/840 PSD W60L60 VPC MK W	(0.38, 0.38) SDCM <3	4000 K	108 lm/W	3500 lm
10304100	RC480B LED35S/840 PSD W30L120 VPC MK PIP	(0.38, 0.38) SDCM <3	4000 K	101 lm/W	3500 lm
10389800	RC480B LED35S/840 PSD W30L120 VPC MK W	(0.38, 0.38) SDCM <3	4000 K	101 lm/W	3500 lm
10305800	RC482B LED35S/840 PSD W62L62 VPC PIP	(0.38, 0.38) SDCM <3	4000 K	123 lm/W	3500 lm
10368300	RC482B LED42S/840 PSD W62L62 VPC W	(0.38, 0.38) SDCM <3	4000 K	124 lm/W	4200 lm
10403100	RC482B LED42S/840 PSD W62L62 VPC PIP	(0.38, 0.38) SDCM <3	4000 K	124 lm/W	4200 lm
10404800	RC482B LED35S/830 PSD W62L62 VPC PIP	(0.43, 0.40) SDCM <3	4000 K	117 lm/W	3500 lm
10405500	RC482B LED42S/830 PSD W62L62 VPC PIP	(0.43, 0.40) SDCM <3	3000 K	115 lm/W	4200 lm
10306500	RC482B LED35S/840 PSD W31L125 VPC PIP	(0.38, 0.38) SDCM <3	4000 K	117 lm/W	3500 lm
10399700	RC482B LED42S/840 PSD W31L125 VPC W	(0.38, 0.38) SDCM <3	4000 K	117 lm/W	4200 lm
10307200	RC482B LED35S/840 PSD W62L62 VPC MK PIP	(0.38, 0.38) SDCM <3	4000 K	108 lm/W	3500 lm
10371300	RC482B LED35S/840 PSD W62L62 VPC MK W	(0.38, 0.38) SDCM <3	4000 K	108 lm/W	3500 lm
10309600	RC480B LED35S/840 PSD W60L60 CPC PIP	(0.38, 0.38) SDCM <3	4000 K	119 lm/W	3500 lm

Order Code	Full Product Name	Initial chromaticity	Init. Corr. Colour Temperature	Initial LED luminaire efficacy	Initial luminous flux
10390400	RC480B LED35S/840 PSD W60L60 CPC W	(0.38, 0.38) SDCM <3	4000 K	119 lm/W	3500 lm
10310200	RC482B LED35S/840 PSD W62L62 CPC PIP	(0.38, 0.38) SDCM <3	4000 K	119 lm/W	3500 lm
10343000	RC480B LED35S/840 PSD W60L60 PCV PIP	(0.38, 0.38) SDCM <3	4000 K	119 lm/W	3500 lm
10374400	RC482B LED42S/840 PSD W62L62 VPC ACL W	(0.38, 0.38) SDCM <3	4000 K	120 lm/W	4200 lm
10408600	RC482B LED42S/840 PSD- T W62L62 VPC ACL P	(0.38, 0.38) SDCM <3	4000 K	120 lm/W	4200 lm
10375100	RC482B LED35S/840 PSD W62L62 VPC MK ACL	(0.38, 0.38) SDCM <3	4000 K	104 lm/W	3500 lm
10409300	RC482B LED35S/840 PSD- T W62L62 VPC MK AC	(0.38, 0.38) SDCM <3	4000 K	108 lm/W	3500 lm
10423900	RC482B LED35S/840 PSD W62L62 PCV W	(0.38, 0.38) SDCM <3	4000 K	119 lm/W	3500 lm
10424600	RC482B LED42S/840 PSD W62L62 PCV W	(0.38, 0.38) SDCM <3	4000 K	118 lm/W	4200 lm
10425300	RC482B LED35S/830 PSD W62L62 PCV W	(0.43, 0.40) SDCM <3	3000 K	111 lm/W	3500 lm
10426000	RC482B LED42S/830 PSD W62L62 PCV W	(0.43, 0.40) SDCM <3	3000 K	111 lm/W	4200 lm
10440600	RC482B LED42S/840 PSD W62L62 PCV ACL W	(0.38, 0.38) SDCM <3	4000 K	115 lm/W	4200 lm
10433800	RC482B LED35S/840 PSD W31L125 PCV MK W	(0.38, 0.38) SDCM <3	4000 K	96 lm/W	3500 lm

Initial Performance (IEC Compliant) (2/2)

Order Code	Full Product Name	Initial input power
27608100	RC480B LED35S/840 PSD W60L60 CPC MK PIP	34.5 W
27610400	RC480B LED42S/840 PSD W30L120 CPC W	38 W
10298300	RC480B LED35S/840 PSD W60L60 VPC W	28.5 W
10299000	RC480B LED35S/840 PSD W60L60 VPC PIP	28.5 W
10300300	RC480B LED35S/840 PSD W60L60 VPC ACL W	29.5 W
10302700	RC480B LED35S/840 PSD W30L120 VPC PIP	30 W
10303400	RC480B LED35S/840 PSD W60L60 VPC MK PIP	32.5 W
10388100	RC480B LED35S/840 PSD W60L60 VPC MK W	32.5 W
10304100	RC480B LED35S/840 PSD W30L120 VPC MK PIP	34.5 W
10389800	RC480B LED35S/840 PSD W30L120 VPC MK W	34.5 W
10305800	RC482B LED35S/840 PSD W62L62 VPC PIP	28.5 W
10368300	RC482B LED42S/840 PSD W62L62 VPC W	34 W
10403100	RC482B LED42S/840 PSD W62L62 VPC PIP	34 W
10404800	RC482B LED35S/830 PSD W62L62 VPC PIP	30 W
10405500	RC482B LED42S/830 PSD W62L62 VPC PIP	36.5 W
10306500	RC482B LED35S/840 PSD W31L125 VPC PIP	30 W
10399700	RC482B LED42S/840 PSD W31L125 VPC W	36 W

Order Code	Full Product Name	Initial input power
10307200	RC482B LED35S/840 PSD W62L62 VPC MK PIP	32.5 W
10371300	RC482B LED35S/840 PSD W62L62 VPC MK W	32.5 W
10309600	RC480B LED35S/840 PSD W60L60 CPC PIP	29.5 W
10390400	RC480B LED35S/840 PSD W60L60 CPC W	29.5 W
10310200	RC482B LED35S/840 PSD W62L62 CPC PIP	29.5 W
10343000	RC480B LED35S/840 PSD W60L60 PCV PIP	29.5 W
10374400	RC482B LED42S/840 PSD W62L62 VPC ACL W	35 W
10408600	RC482B LED42S/840 PSD-T W62L62 VPC ACL P	35 W
10375100	RC482B LED35S/840 PSD W62L62 VPC MK ACL	33.5 W
10409300	RC482B LED35S/840 PSD-T W62L62 VPC MK AC	32.5 W
10423900	RC482B LED35S/840 PSD W62L62 PCV W	29.5 W
10424600	RC482B LED42S/840 PSD W62L62 PCV W	35.5 W
10425300	RC482B LED35S/830 PSD W62L62 PCV W	31.5 W
10426000	RC482B LED42S/830 PSD W62L62 PCV W	38 W
10440600	RC482B LED42S/840 PSD W62L62 PCV ACL W	36.5 W
10433800	RC482B LED35S/840 PSD W31L125 PCV MK W	36.5 W

Mechanical and Housing

Order Code	Full Product Name	Geometry
27608100	RC480B LED35S/840 PSD W60L60 CPC MK PIP	W60L60
27610400	RC480B LED42S/840 PSD W30L120 CPC W	W30L120
10298300	RC480B LED35S/840 PSD W60L60 VPC W	W60L60
10299000	RC480B LED35S/840 PSD W60L60 VPC PIP	W60L60
10300300	RC480B LED35S/840 PSD W60L60 VPC ACL W	W60L60
10302700	RC480B LED35S/840 PSD W30L120 VPC PIP	W30L120
10303400	RC480B LED35S/840 PSD W60L60 VPC MK PIP	W60L60
10388100	RC480B LED35S/840 PSD W60L60 VPC MK W	W60L60
10304100	RC480B LED35S/840 PSD W30L120 VPC MK PIP	W30L120
10389800	RC480B LED35S/840 PSD W30L120 VPC MK W	W30L120
10305800	RC482B LED35S/840 PSD W62L62 VPC PIP	W62L62
10368300	RC482B LED42S/840 PSD W62L62 VPC W	W62L62
10403100	RC482B LED42S/840 PSD W62L62 VPC PIP	W62L62
10404800	RC482B LED35S/830 PSD W62L62 VPC PIP	W62L62
10405500	RC482B LED42S/830 PSD W62L62 VPC PIP	W62L62
10306500	RC482B LED35S/840 PSD W31L125 VPC PIP	W31L125
10399700	RC482B LED42S/840 PSD W31L125 VPC W	W31L125

Order Code	Full Product Name	Geometry
10307200	RC482B LED35S/840 PSD W62L62 VPC MK PIP	W62L62
10371300	RC482B LED35S/840 PSD W62L62 VPC MK W	W62L62
10309600	RC480B LED35S/840 PSD W60L60 CPC PIP	W60L60
10390400	RC480B LED35S/840 PSD W60L60 CPC W	W60L60
10310200	RC482B LED35S/840 PSD W62L62 CPC PIP	W62L62
10343000	RC480B LED35S/840 PSD W60L60 PCV PIP	W60L60
10374400	RC482B LED42S/840 PSD W62L62 VPC ACL W	W62L62
10408600	RC482B LED42S/840 PSD-T W62L62 VPC ACL P	W62L62
10375100	RC482B LED35S/840 PSD W62L62 VPC MK ACL	W62L62
10409300	RC482B LED35S/840 PSD-T W62L62 VPC MK AC	W62L62
10423900	RC482B LED35S/840 PSD W62L62 PCV W	W62L62
10424600	RC482B LED42S/840 PSD W62L62 PCV W	W62L62
10425300	RC482B LED35S/830 PSD W62L62 PCV W	W62L62
10426000	RC482B LED42S/830 PSD W62L62 PCV W	W62L62
10440600	RC482B LED42S/840 PSD W62L62 PCV ACL W	W62L62
10433800	RC482B LED35S/840 PSD W31L125 PCV MK W	W31L125

