



CorePro LEDtube EM/ Mains T8

CorePro LEDtube 600mm 8W840 C G

Philips CorePro LEDtubes are the quick and easy way to replace T8 fluorescent or other LED tubes with a fast pack back time. Not only does the Core range of LEDtubes require a low initial investment, but LED energy efficiency also delivers instant savings that you can bank on over a long and reliable lifetime. Plus, with the same lamp size and light distribution as fluorescent alternatives, you'll never know the difference. There are two ways to install these LED tubes: Rewire your existing fluorescent-based luminaires so the CorePro LEDtubes work directly on the Mains. Or simply change the fluorescent starter to an LED starter that can be used with your Electromagnetic ballasts.

Warnings and Safety

- NOTE: The overall energy efficiency and light distribution of any installation that uses these lamps will be determined by the design of the installation.
- Installation must be done according to the installation diagrams provided with the lamp or available online. Installation must be done by a certified professional.

Product data

General Information		Luminous Flux	
Cap-Base	G13 [Medium Bi-Pin Fluorescent]	Luminous Flux	800 lm
Nominal lifetime	30,000 hour(s)	Correlated Color Temperature (Nom)	4000 K
Switching Cycle	50,000	Color Consistency	<6
Lighting Technology	LED	Color rendering index (CRI)	80
EU RoHS compliant	Yes	LLMF At End Of Nominal Lifetime (Nom)	70 %
Light Technical		Operating and Electrical	
Color Code	840 [CCT of 4000K]	Line Frequency	50 to 60 Hz
Beam Angle (Nom)	240 degree(s)	Input Frequency	50 to 60 Hz
		Power Consumption	8 W

CorePro LEDtube EM/Mains T8

Starting Time (Nom)	0.5 s
Warm-up time to 60% light	Instant full light s
Power Factor (Fraction)	0.9
Voltage (Nom)	220-240 V

Temperature

Ambient temperature range	-20 °C to 45 °C
T-Case Maximum (Nom)	56 °C

Controls and Dimming

Dimmable	No
----------	----

Mechanical and Housing

Product Length	600 mm
----------------	--------

Approval and Application

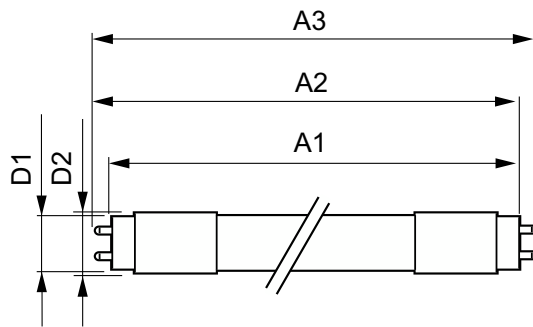
Energy Saving Product	Yes
-----------------------	-----

Suitable For Accent Lighting	No
Approval Marks	CE marking RoHS compliance KEMA Keur certificate
Energy Consumption kWh/1000 h	8 kWh

Product Data

Order product name	CorePro LEDtube 600mm 8W840 C G
Full product name	CorePro LEDtube 600mm 8W840 C G
Full product code	87186964927200
Order code	929001173202
Material Nr. (12NC)	929001173202
Numerator - Quantity Per Pack	1
EAN/UPC - Product/Case	8718696492772
Numerator - Packs per outer box	10
EAN/UPC - Case	8718696492789

Dimensional drawing



Product	D1	D2	A1	A2	A3
CorePro LEDtube 600mm 8W840 C G	25.68 mm	28 mm	588.5 mm	595.5 mm	602.5 mm

Photometric data

Light Distribution Diagram - CorePro LEDtube 600mm 8W840 C G

Spectral Power Distribution Colour - CorePro LEDtube 600mm 8W840 C G

CorePro LEDtube EM/Mains T8

