



# T5

## 24T5HO/46-830/IF33/P/DIM 10/1

Philips T5 LED tubes offer an affordable, energy saving retrofit solution. The T5 lamps have been engineered to withstand the test of time with a 50,000-hour lifetime and a limited 5-year warranty to back it up. The lighting performance effectively replaces conventional fluorescent T5 HO or T5 HE lamps. Available in either InstantFit (Type A or Type C) or MainsFit (Type B / Ballast bypass), Philips T5 TLEDs provide a variety of options for any application.

### Product data

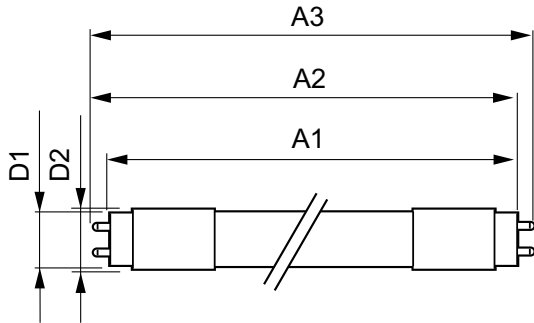
General Information		Starting Time (Nom)	
Cap-Base	G5 [G5]		0.5 s
Nominal lifetime	50,000 hour(s)	Warm-up time to 60% light	0.5 s
Switching Cycle	50,000	Power Factor (Fraction)	0.9
Lighting Technology	LED	Voltage (Nom)	39-64 V
EU RoHS compliant	Yes	UL Type	Type A - works on ballast
Light Technical		Temperature	
Color Code	830 [CCT of 3000K]	Ambient temperature range	-4 °F to 113 °F
Luminous Flux	3,300 lm	Controls and Dimming	
Correlated Color Temperature (Nom)	3000 K	Dimmable	Yes
Color Consistency	<5	Mechanical and Housing	
Color rendering index (CRI)	82	Bulb Material	Plastic
LLMF At End Of Nominal Lifetime (Nom)	70 %	Product Length	47-1/4 inch
Operating and Electrical		Approval and Application	
Line Frequency	40000-80000 Hz	Energy Saving Product	Yes
Input Frequency	40000-80000 Hz	Approval Marks	UL certificate RoHS compliance
Power Consumption	24 W		
Lamp Current (Max)	600 mA		
Lamp Current (Min)	400 mA		

# T5

Product Data	
Order product name	24T5HO/46-830/IF33/P/DIM 10/1
Full product name	24T5HO/46-830/IF33/P/DIM 10/1
Order code	467126
Material Nr. (12NC)	929001283704
Numerator - Quantity Per Pack	1

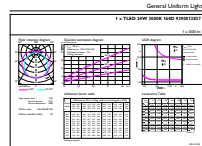
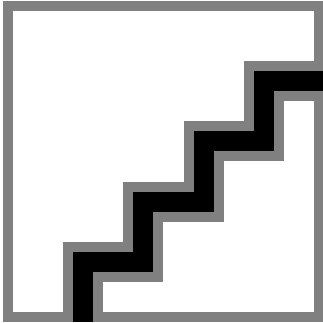
EAN/UPC - Product/Case	046677467128
Numerator - Packs per outer box	10
EAN/UPC - Case	50046677467123

## Dimensional drawing



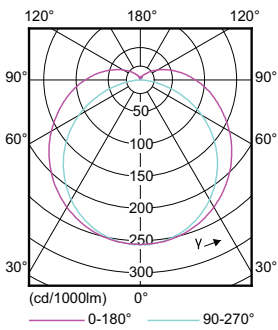
Product	D1	D2	A1	A2	A3
24T5HO/46-830/IF33/P/DIM 10/1	5/8 inch	3/4 inch	45-3/16 inch	45-1/2 inch	45-3/4 inch

## Photometric data



Spectral Power Distribution Colour - 24T5HO/46-830/IF33/P/DIM 10/1

General uniform lighting - 24T5HO/46-830/IF33/P/DIM 10/1



Light Distribution Diagram - 24T5HO/46-830/IF33/P/DIM 10/1

