



# PL-C/T

## 12PL-C/T/COR/32H-835/IF14/P/4P/DIM 10/1

Philips PLED 4-pin & 2-pin lamps are an affordable LED solution to replace compact fluorescent lamps. The product provides a natural lighting effect for use in many lighting applications, and provides instant energy savings, making them an environmentally-friendly solution. Available as replacements for 13W, 26W and 32W compact fluorescent lamps.

### Product data

General Information	
Cap-Base	G24q [G24q]
Nominal lifetime	50,000 hour(s)
Switching Cycle	50,000
Lighting Technology	LED
EU RoHS compliant	Yes
Light Technical	
Color Code	835 [CCT of 3500K]
Beam Angle (Nom)	120 degree(s)
Luminous Flux	1,400 lm
Color Designation	White (WH)
Correlated Color Temperature (Nom)	3500 K
Luminous Efficacy (rated) (Nom)	116.00 lm/W
Color Consistency	<6
Color rendering index (CRI)	82
LLMF At End Of Nominal Lifetime (Nom)	70 %
Operating and Electrical	
Line Frequency	20000-100000 Hz
Input Frequency	20000-100000 Hz
Power Consumption	12 W

Lamp Current (Max)	500 mA
Lamp Current (Min)	150 mA
Wattage Equivalent	32 W
Starting Time (Nom)	0.5 s
Warm-up time to 60% light	0.5 s
Power Factor (Fraction)	0.9
Voltage (Nom)	25-55 V
UL Type	UL Type A
Temperature	
Ambient temperature range	-4 °F to 113 °F
T-Case Maximum (Nom)	77 °F
Controls and Dimming	
Dimmable	Yes
Mechanical and Housing	
Bulb Finish	Frosted
Bulb Material	Plastic
Product Length	7-7/8 inch
Bulb Shape	PL-C;PL-T

# PL-C/T

## Approval and Application

Energy Saving Product	Yes
Approval Marks	RoHS compliance UL certificate KEMA Keur certificate DLC compliance
Energy Consumption kWh/1000 h	- kWh
Energy Certifications	DLC Standard

## Application Conditions

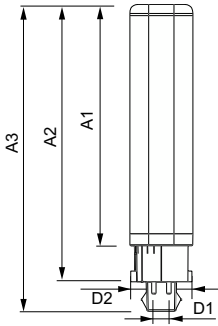
can it be used in closed luminaires	Yes
-------------------------------------	-----

## Product Data

Order product name	12PL-C/T/COR/32H-835/IF14/P/4P/DIM 10/1
--------------------	---

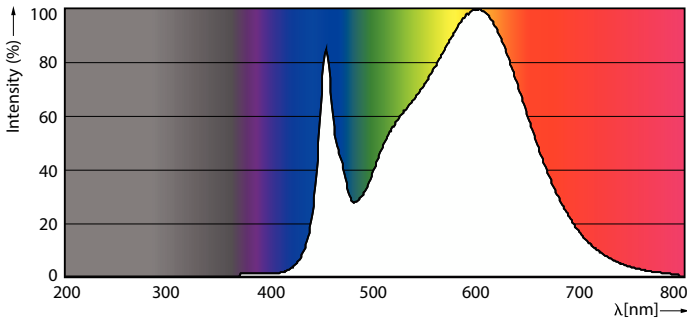
Full product name	12PL-C/T/COR/32H-835/IF14/P/4P/DIM 10/1
Order code	476085
Material Nr. (12NC)	929001819904
Numerator - Quantity Per Pack	1
EAN/UPC - Product/Case	046677476083
Numerator - Packs per outer box	10
EAN/UPC - Case	50046677476088

## Dimensional drawing

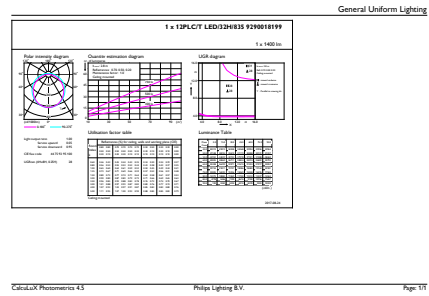


Product	D1	D2	A1	A2	A3
12PL-C/T/COR/32H-835/IF14/P/4P/DIM 10/1	1 inch	1-1/8 inch	5-1/8 inch	5-7/8 inch	6-1/2 inch

## Photometric data



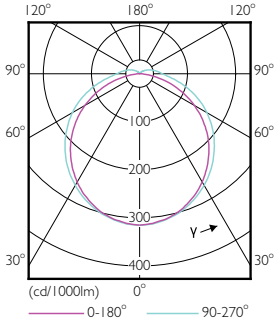
Spectral Power Distribution Colour - 12PL-C/T/COR/32H-835/IF14/P/4P/DIM 10/1



General uniform lighting - 12PL-C/T/COR/32H-835/IF14/P/4P/DIM 10/1

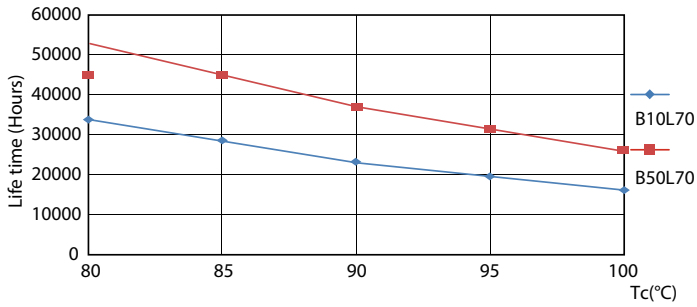
# PL-C/T

## Photometric data

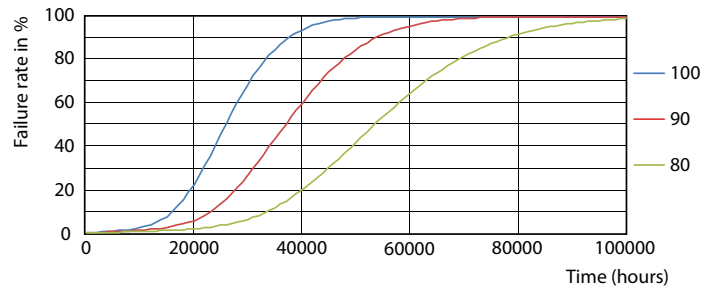


Light Distribution Diagram - 12PL-C/T/COR/32H-835/IF14/P/4P/DIM 10/1

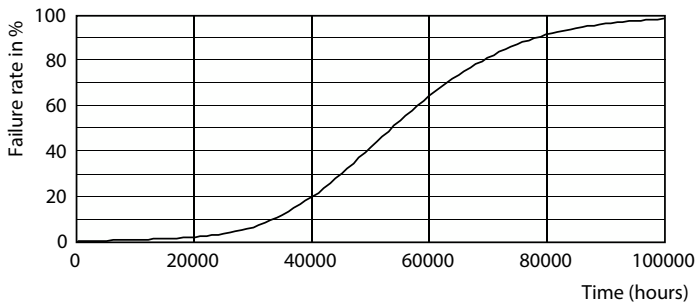
## Lifetime



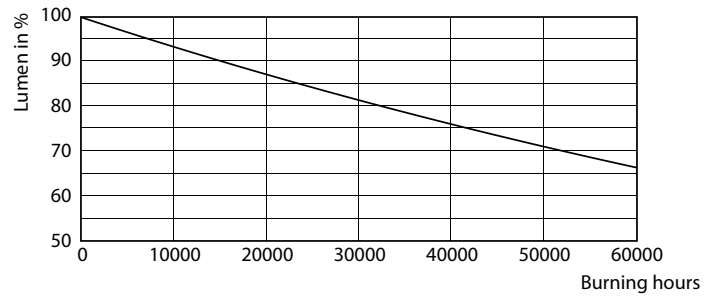
Life Expectancy Diagram - 12PL-C/T/COR/32H-835/IF14/P/4P/DIM 10/1



Life Expectancy Diagram - 12PL-C/T/COR/32H-835/IF14/P/4P/DIM 10/1



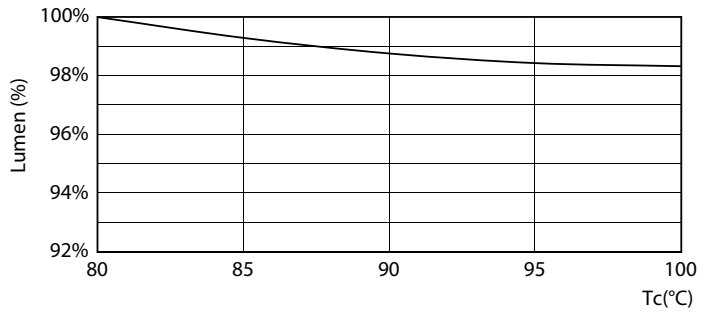
Life Expectancy Diagram - 12PL-C/T/COR/32H-835/IF14/P/4P/DIM 10/1



Lumen Maintenance Diagram - 12PL-C/T/COR/32H-835/IF14/P/4P/DIM 10/1

# PL-C/T

## Lifetime



Lumen Maintenance Diagram - 12PL-C/T/COR/32H-835/IF14/P/4P/DIM  
10/1

