



InstantFit (UL Type-A) T5

11T5HE/34-850/IF15/G/DIM 10/1

The InstantFit TLED lamps provide hassle-free installation with simple lamp-for-lamp replacements. They deliver what we promise, with at least 40% energy savings, flicker-free performance, and the life you would expect. Other lamps claim compatibility but only InstantFit (UL Type-A) has been proven to work with over 200 ballasts and drivers, delivering even light output, with proven energy savings and a long average lifetime. End users will be delighted being under these comfortable and high quality InstantFit lamps with no visible flicker and optimized optics. Energy managers will enjoy the InstantFit lamps too as they can count the savings delivered by our lamps. To enjoy more energy savings, the InstantFit lamps can be paired with the Advance TLED drivers to create a Type C system.

Product data

General Information		Color rendering index (CRI)	
Cap-Base	G5 [G5]		82
Nominal lifetime	50,000 hour(s)	LLMF At End Of Nominal Lifetime (Nom)	70 %
Switching Cycle	50,000	Operating and Electrical	
Lighting Technology	LED	Line Frequency	40000-110000 Hz
EU RoHS compliant	Yes	Input Frequency	40000-110000 Hz
Light Technical		Power Consumption	11 W
Color Code	850 [CCT of 5000K]	Lamp Current (Max)	400 mA
Beam Angle (Nom)	200 degree(s)	Lamp Current (Min)	60 mA
Luminous Flux	1,500 lm	Wattage Equivalent	21 W
Color Designation	Daylight	Starting Time (Nom)	0.5 s
Correlated Color Temperature (Nom)	5000 K	Warm-up time to 60% light	0.5 s
Luminous Efficacy (rated) (Nom)	136.00 lm/W	Power Factor (Fraction)	0.9
Color Consistency	<5	Voltage (Nom)	50-80 V

InstantFit (UL Type-A) T5

UL Type	UL Type A
Temperature	
Ambient temperature range	-4 °F to 113 °F
T-Case Maximum (Nom)	158 °F
Controls and Dimming	
Dimmable	Yes
Mechanical and Housing	
Bulb Finish	Frosted
Bulb Material	Glass
Product Length	35-7/16 inch
Bulb Shape	T5
Approval and Application	
Energy Saving Product	Yes

Approval Marks	UL certificate RoHS compliance
Energy Consumption kWh/1000 h	- kWh

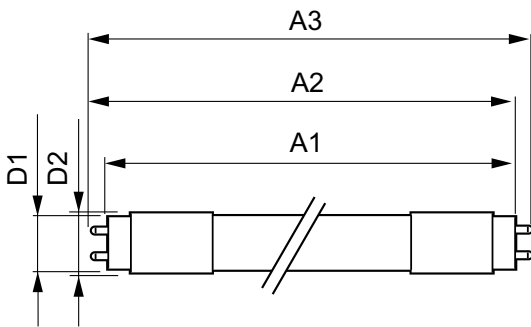
Application Conditions

can it be used in closed luminaires	Yes
-------------------------------------	-----

Product Data

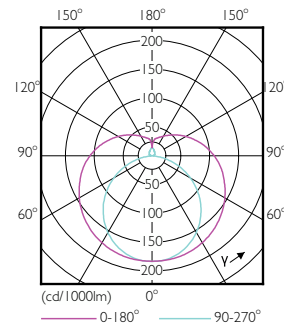
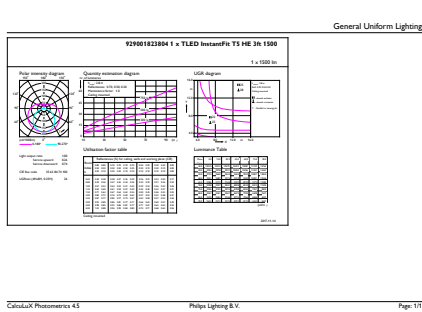
Order product name	11T5HE/34-850/IF15/G/DIM 10/1
Full product name	11T5HE/34-850/IF15/G/DIM 10/1
Order code	476481
Material Nr. (12NC)	929001823804
Numerator - Quantity Per Pack	1
EAN/UPC - Product/Case	046677476489
Numerator - Packs per outer box	10
EAN/UPC - Case	50046677476484

Dimensional drawing



Product	D1	D2	A1	A2	A3
11T5HE/34-850/ IF15/G/DIM 10/1	5/8 inch	3/4 inch	33-3/8 inch	33-11/16 inch	33-15/16 inch

Photometric data

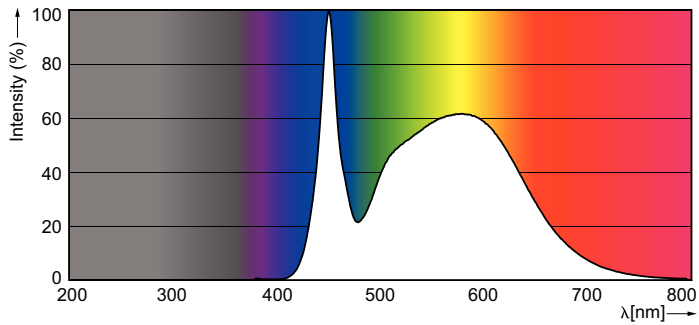


General uniform lighting - 11T5HE/34-850/IF15/G/DIM 10/1

Light Distribution Diagram - 11T5HE/34-850/IF15/G/DIM 10/1

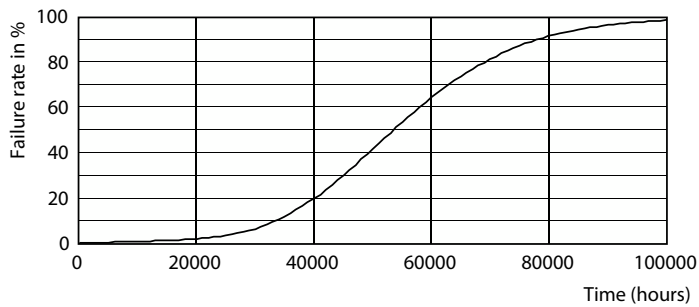
InstantFit (UL Type-A) T5

Photometric data

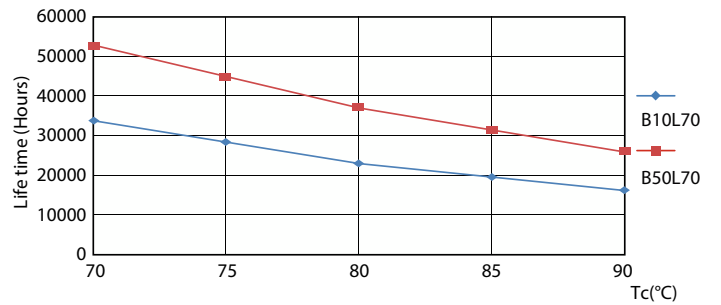


Spectral Power Distribution Colour - 11T5HE/34-850/IF15/G/DIM 10/1

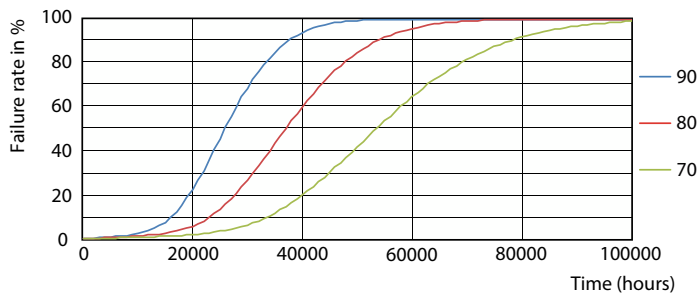
Lifetime



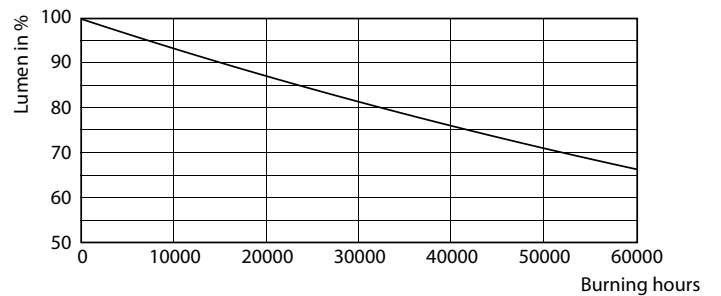
Life Expectancy Diagram - 11T5HE/34-850/IF15/G/DIM 10/1



Life Expectancy Diagram - 11T5HE/34-850/IF15/G/DIM 10/1



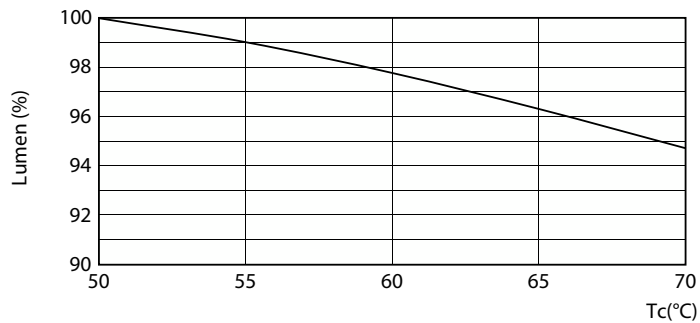
Life Expectancy Diagram - 11T5HE/34-850/IF15/G/DIM 10/1



Lumen Maintenance Diagram - 11T5HE/34-850/IF15/G/DIM 10/1

InstantFit (UL Type-A) T5

Lifetime



Lumen Maintenance Diagram - 11T5HE/34-850/IF15/G/DIM 10/1

