



# PL-S

## 5PL-S/LED/13H/840/IF5/P/2P 20/1

Philips LED PL-S lamps make the transition to LED from CFL lamps as simple as replacing a lamp. The InstantFit (UL Type A) 2-pin PL-S LED lamps are available in a wide array of color temperatures. They quickly and effectively replace 13W 2-pin compact fluorescent PL-S lamps.

### Product data

| General Information                   |                    |
|---------------------------------------|--------------------|
| Cap-Base                              | GX23               |
| Nominal lifetime                      | 50,000 hour(s)     |
| Switching Cycle                       | 50,000             |
| Lighting Technology                   | LED                |
| EU RoHS compliant                     | Yes                |
| Light Technical                       |                    |
| Color Code                            | 840 [CCT of 4000K] |
| Beam Angle (Nom)                      | 120 degree(s)      |
| Luminous Flux                         | 580 lm             |
| Color Designation                     | Cool White (CW)    |
| Correlated Color Temperature (Nom)    | 4000 K             |
| Luminous Efficacy (rated) (Nom)       | 116.00 lm/W        |
| Color Consistency                     | <6                 |
| Color rendering index (CRI)           | 82                 |
| LLMF At End Of Nominal Lifetime (Nom) | 70 %               |
| Operating and Electrical              |                    |
| Line Frequency                        | 50 to 60 Hz        |
| Input Frequency                       | 50 to 60 Hz        |
| Power Consumption                     | 5 W                |
| Lamp Current (Max)                    | 50 mA              |

| Lamp Current (Min)        | 15 mA           |
|---------------------------|-----------------|
| Wattage Equivalent        | 13 W            |
| Starting Time (Nom)       | 0.5 s           |
| Warm-up time to 60% light | 0.5 s           |
| Power Factor (Fraction)   | 0.9             |
| Voltage (Nom)             | 120-277 V       |
| UL Type                   | UL Type A       |
| Temperature               |                 |
| Ambient temperature range | -4 °F to 113 °F |
| T-Case Maximum (Nom)      | 167 °F          |
| Controls and Dimming      |                 |
| Dimmable                  | No              |
| Mechanical and Housing    |                 |
| Bulb Finish               | Frosted         |
| Bulb Material             | Plastic         |
| Product Length            | 6-3/4 inch      |
| Bulb Shape                | PL-S            |
| Approval and Application  |                 |
| Energy Saving Product     | Yes             |

# PL-S

|                               |                                |
|-------------------------------|--------------------------------|
| Approval Marks                | UL certificate RoHS compliance |
| Energy Consumption kWh/1000 h | - kWh                          |

## Application Conditions

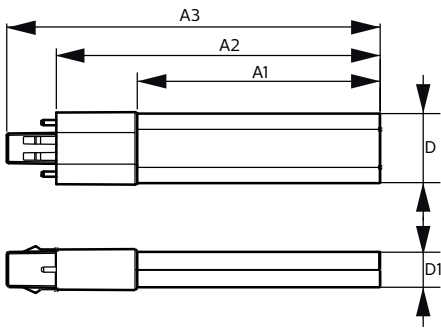
|                                     |     |
|-------------------------------------|-----|
| can it be used in closed luminaires | Yes |
|-------------------------------------|-----|

## Product Data

|                    |                                 |
|--------------------|---------------------------------|
| Order product name | 5PL-S/LED/13H/840/IF5/P/2P 20/1 |
| Full product name  | 5PL-S/LED/13H/840/IF5/P/2P 20/1 |

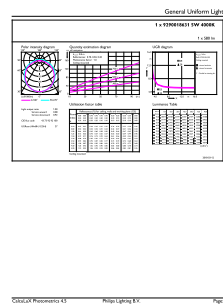
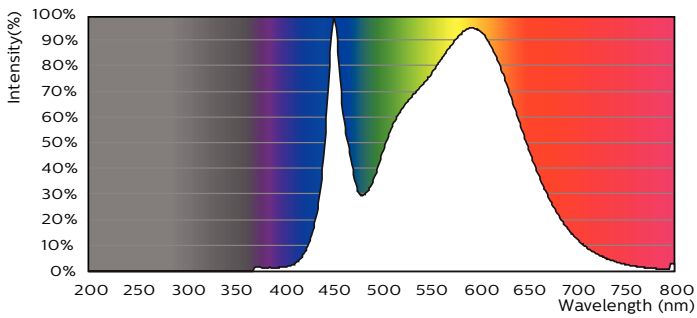
|                                 |                |
|---------------------------------|----------------|
| Order code                      | 529586         |
| Material Nr. (12NC)             | 929001863104   |
| Numerator - Quantity Per Pack   | 1              |
| EAN/UPC - Product/Case          | 046677529581   |
| Numerator - Packs per outer box | 20             |
| EAN/UPC - Case                  | 50046677529586 |

## Dimensional drawing



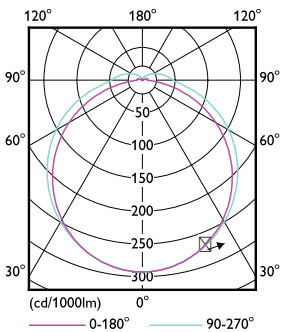
| Product                         | D          | D1       | A1         | A2           | A3          |
|---------------------------------|------------|----------|------------|--------------|-------------|
| 5PL-S/LED/13H/840/IF5/P/2P 20/1 | 1-1/4 inch | 5/8 inch | 4-1/4 inch | 5-11/16 inch | 6-9/16 inch |

## Photometric data



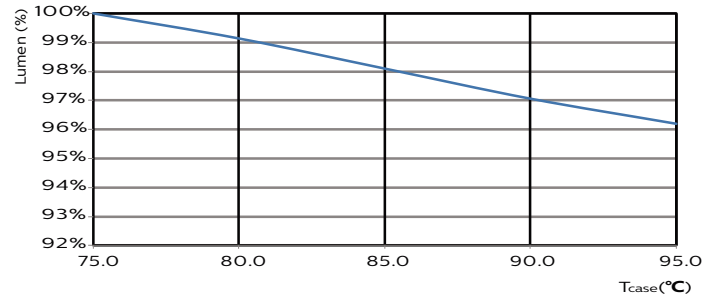
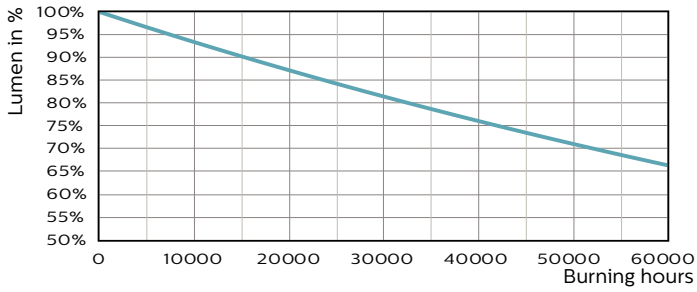
Spectral Power Distribution Colour - 5PL-S/LED/13H/840/IF5/P/2P 20/1

General uniform lighting - 5PL-S/LED/13H/840/IF5/P/2P 20/1



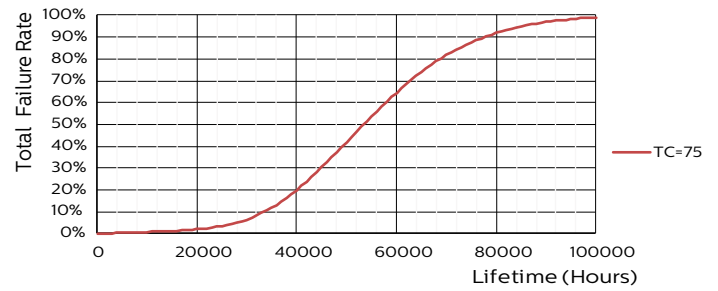
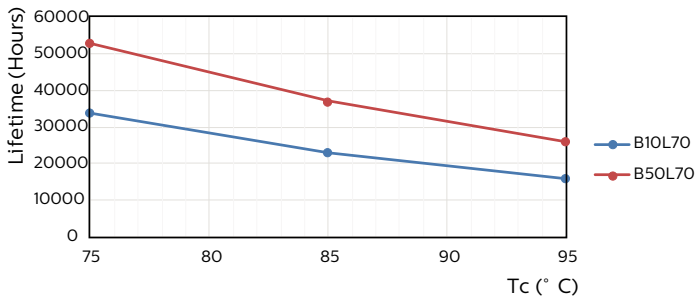
Light Distribution Diagram - 5PL-S/LED/13H/840/IF5/P/2P 20/1

Lifetime



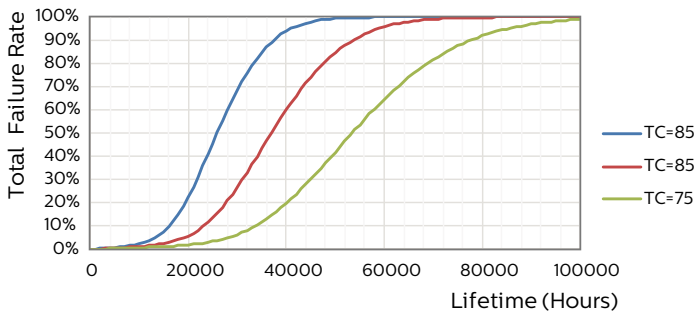
Lumen Maintenance Diagram - 5PL-S/LED/13H/840/IF5/P/2P 20/1

Lumen Maintenance Diagram - 5PL-S/LED/13H/840/IF5/P/2P 20/1



Life Expectancy Diagram - 5PL-S/LED/13H/840/IF5/P/2P 20/1

Life Expectancy Diagram - 5PL-S/LED/13H/840/IF5/P/2P 20/1



Life Expectancy Diagram - 5PL-S/LED/13H/840/IF5/P/2P 20/1

