



PL-C/T

5PL-C/LED/13V/835/IF5/P/2P 20/1

Philips PLED 4-pin & 2-pin lamps are an affordable LED solution to replace compact fluorescent lamps. The product provides a natural lighting effect for use in many lighting applications, and provides instant energy savings, making them an environmentally-friendly solution. Available as replacements for 13W, 26W and 32W compact fluorescent lamps.

Product data

General Information	
Cap-Base	GX23-2 [GX23-2]
Nominal lifetime	50,000 hour(s)
Switching Cycle	50,000
Lighting Technology	LED
EU RoHS compliant	Yes
Light Technical	
Color Code	835 [CCT of 3500K]
Beam Angle (Nom)	150 degree(s)
Luminous Flux	550 lm
Color Designation	White (WH)
Correlated Color Temperature (Nom)	3500 K
Luminous Efficacy (rated) (Nom)	110.00 lm/W
Color Consistency	<6
Color rendering index (CRI)	82
LLMF At End Of Nominal Lifetime (Nom)	70 %
Operating and Electrical	
Line Frequency	50 to 60 Hz
Input Frequency	50 to 60 Hz
Power Consumption	5 W

Lamp Current (Max)	50 mA
Lamp Current (Min)	15 mA
Wattage Equivalent	13 W
Starting Time (Nom)	0.5 s
Warm-up time to 60% light	0.5 s
Power Factor (Fraction)	0.9
Voltage (Nom)	120-277 V
UL Type	Type A - works on ballast
Temperature	
Ambient temperature range	-4 °F to 113 °F
T-Case Maximum (Nom)	158 °F
Controls and Dimming	
Dimmable	No
Mechanical and Housing	
Bulb Finish	Frosted
Bulb Material	Plastic
Product Length	3-15/16 inch
Bulb Shape	PL-C

PL-C/T

Approval and Application

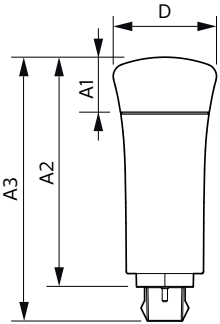
Energy Saving Product	Yes
Approval Marks	UL certificate RoHS compliance
Energy Consumption kWh/1000 h	- kWh

Product Data

Order product name	5PL-C/LED/13V/835/IF5/P/2P 20/1
Full product name	5PL-C/LED/13V/835/IF5/P/2P 20/1

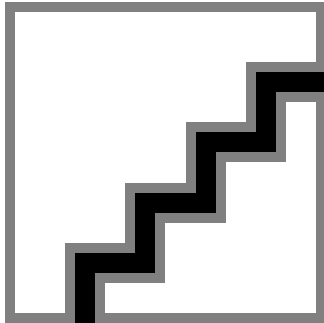
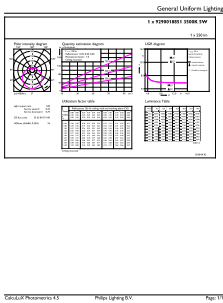
Order code	532374
Material Nr. (12NC)	929001885104
Numerator - Quantity Per Pack	1
EAN/UPC - Product/Case	046677532376
Numerator - Packs per outer box	20
EAN/UPC - Case	50046677532371

Dimensional drawing



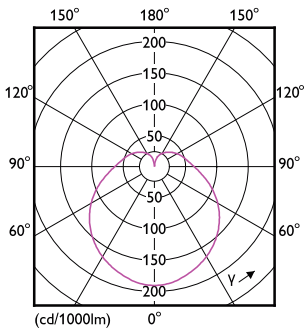
Product	D	A1	A2	A3
5PL-C/LED/13V/835/IF5/P/2P 20/1	1-13/16 inch	1 inch	4 inch	4-5/8 inch

Photometric data



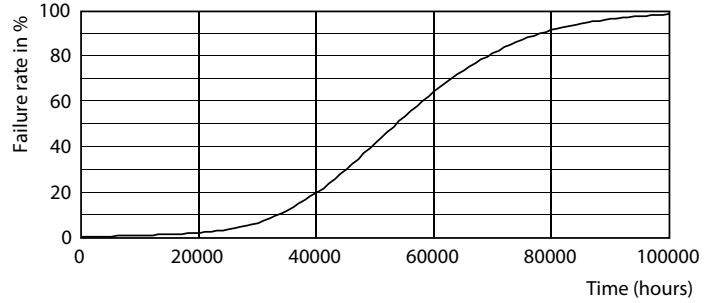
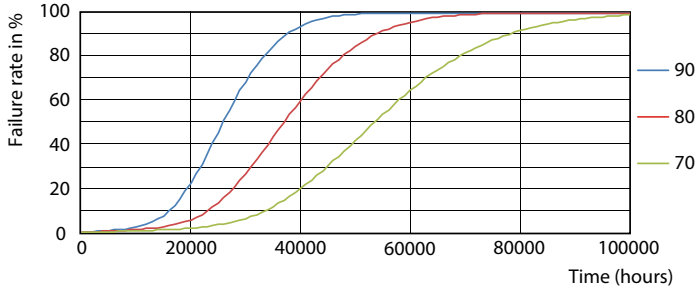
General uniform lighting - 5PL-C/LED/13V/835/IF5/P/2P 20/1

Spectral Power Distribution Colour - 5PL-C/LED/13V/835/IF5/P/2P 20/1

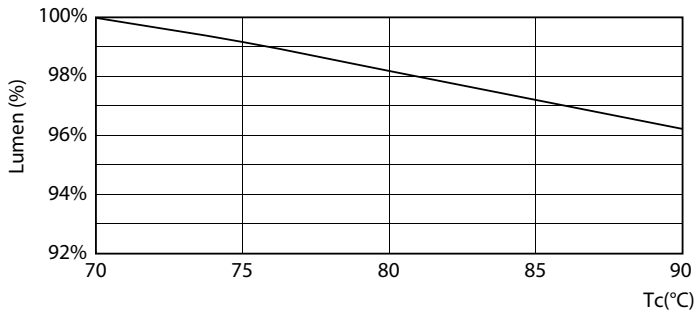


Light Distribution Diagram - 5PL-C/LED/13V/835/IF5/P/2P 20/1

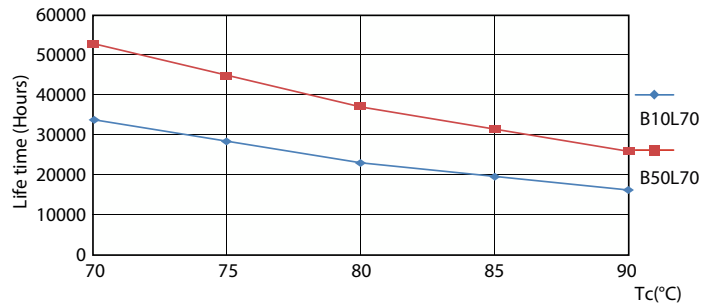
Lifetime



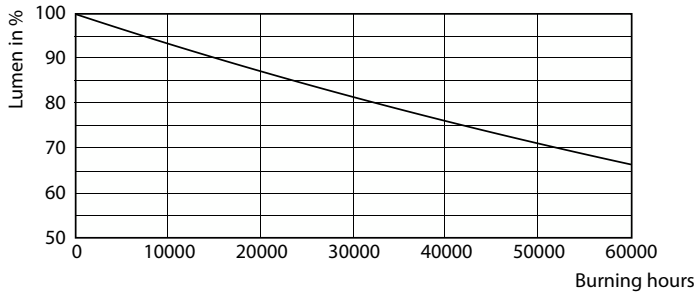
Life Expectancy Diagram - 5PL-C/LED/13V/835/IF5/P/2P 20/1



Life Expectancy Diagram - 5PL-C/LED/13V/835/IF5/P/2P 20/1



Lumen Maintenance Diagram - 5PL-C/LED/13V/835/IF5/P/2P 20/1



Life Expectancy Diagram - 5PL-C/LED/13V/835/IF5/P/2P 20/1

Lumen Maintenance Diagram - 5PL-C/LED/13V/835/IF5/P/2P 20/1

