



# PL-C/T

## 5PL-C/LED/13V/840/IF5/P/2P 20/1

Philips PLED 4-pin & 2-pin lamps are an affordable LED solution to replace compact fluorescent lamps. The product provides a natural lighting effect for use in many lighting applications, and provides instant energy savings, making them an environmentally-friendly solution. Available as replacements for 13W, 26W and 32W compact fluorescent lamps.

### Product data

| General Information                   |                    | Lamp Current (Max)        |                           |
|---------------------------------------|--------------------|---------------------------|---------------------------|
| Cap-Base                              | GX23-2 [GX23-2]    | Lamp Current (Max)        | 50 mA                     |
| Nominal lifetime                      | 50,000 hour(s)     | Lamp Current (Min)        | 15 mA                     |
| Switching Cycle                       | 50,000             | Wattage Equivalent        | 13 W                      |
| Lighting Technology                   | LED                | Starting Time (Nom)       | 0.5 s                     |
| EU RoHS compliant                     | Yes                | Warm-up time to 60% light | 0.5 s                     |
|                                       |                    | Power Factor (Fraction)   | 0.9                       |
|                                       |                    | Voltage (Nom)             | 120-277 V                 |
|                                       |                    | UL Type                   | Type A - works on ballast |
| Light Technical                       |                    | Temperature               |                           |
| Color Code                            | 840 [CCT of 4000K] | Ambient temperature range | -4 °F to 113 °F           |
| Beam Angle (Nom)                      | 150 degree(s)      | T-Case Maximum (Nom)      | 158 °F                    |
| Luminous Flux                         | 580 lm             |                           |                           |
| Color Designation                     | Cool White (CW)    | Controls and Dimming      |                           |
| Correlated Color Temperature (Nom)    | 4000 K             | Dimmable                  | No                        |
| Luminous Efficacy (rated) (Nom)       | 116.00 lm/W        |                           |                           |
| Color Consistency                     | <6                 | Mechanical and Housing    |                           |
| Color rendering index (CRI)           | 82                 | Bulb Finish               | Frosted                   |
| LLMF At End Of Nominal Lifetime (Nom) | 70 %               | Bulb Material             | Plastic                   |
|                                       |                    | Product Length            | 3-15/16 inch              |
|                                       |                    | Bulb Shape                | Tube, single-ended        |
| Operating and Electrical              |                    |                           |                           |
| Line Frequency                        | 50 to 60 Hz        |                           |                           |
| Input Frequency                       | 50 to 60 Hz        |                           |                           |
| Power Consumption                     | 5 W                |                           |                           |

# PL-C/T

## Approval and Application

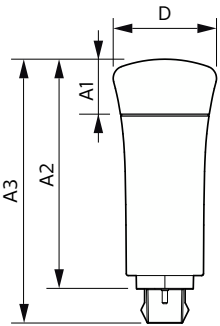
|                               |                                |
|-------------------------------|--------------------------------|
| Energy Saving Product         | Yes                            |
| Approval Marks                | UL certificate RoHS compliance |
| Energy Consumption kWh/1000 h | - kWh                          |

## Product Data

|                    |                                 |
|--------------------|---------------------------------|
| Order product name | 5PL-C/LED/13V/840/IF5/P/2P 20/1 |
| Full product name  | 5PL-C/LED/13V/840/IF5/P/2P 20/1 |

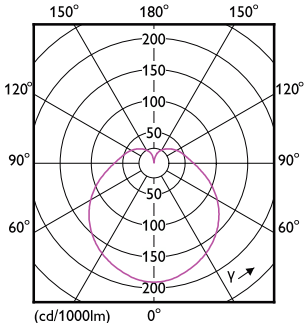
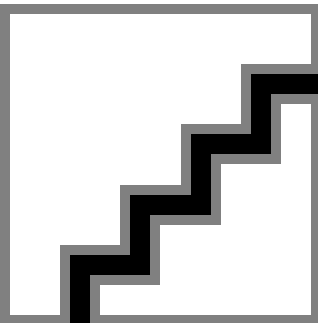
|                                 |                |
|---------------------------------|----------------|
| Order code                      | 532382         |
| Material Nr. (12NC)             | 929001885204   |
| Numerator - Quantity Per Pack   | 1              |
| EAN/UPC - Product/Case          | 046677532383   |
| Numerator - Packs per outer box | 20             |
| EAN/UPC - Case                  | 50046677532388 |

## Dimensional drawing



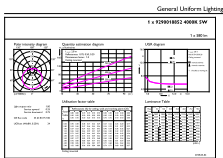
| Product                         | D            | A1     | A2     | A3         |
|---------------------------------|--------------|--------|--------|------------|
| 5PL-C/LED/13V/840/IF5/P/2P 20/1 | 1-13/16 inch | 1 inch | 4 inch | 4-5/8 inch |

## Photometric data



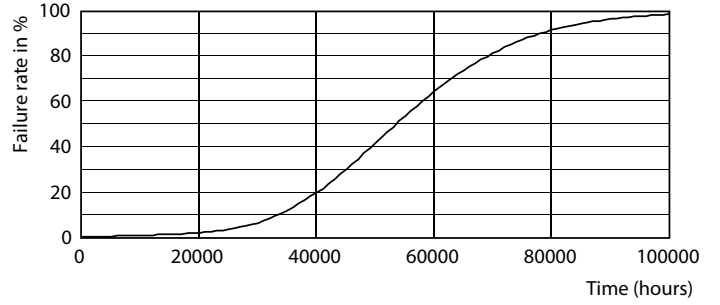
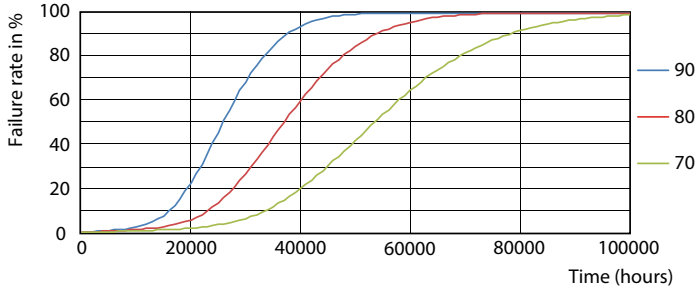
Spectral Power Distribution Colour - 5PL-C/LED/13V/840/IF5/P/2P 20/1

Light Distribution Diagram - 5PL-C/LED/13V/840/IF5/P/2P 20/1

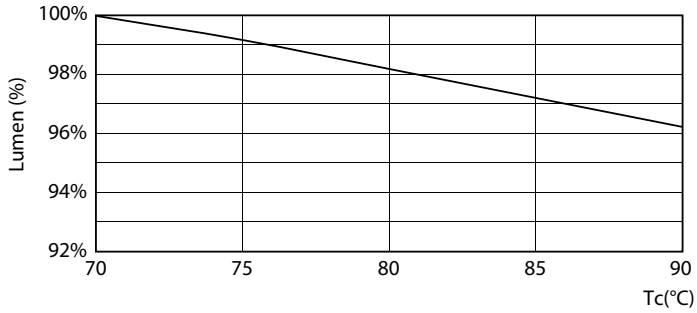


General uniform lighting - 5PL-C/LED/13V/840/IF5/P/2P 20/1

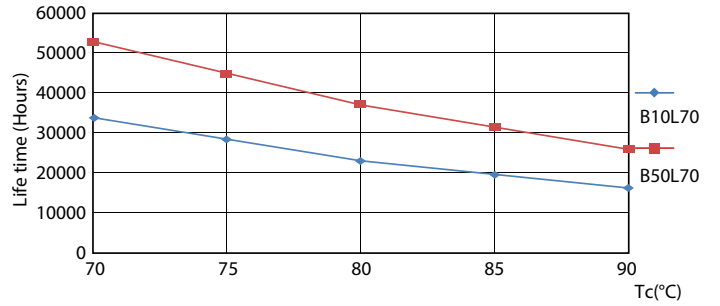
Lifetime



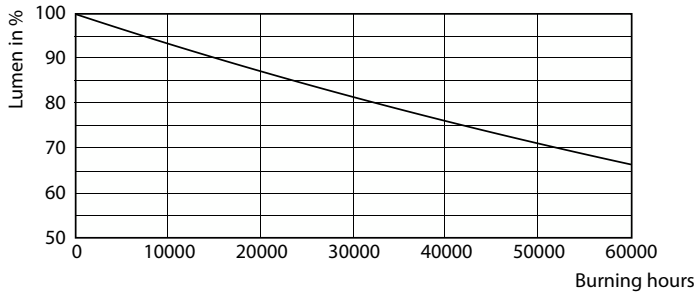
Life Expectancy Diagram - 5PL-C/LED/13V/840/IF5/P/2P 20/1



Life Expectancy Diagram - 5PL-C/LED/13V/840/IF5/P/2P 20/1



Lumen Maintenance Diagram - 5PL-C/LED/13V/840/IF5/P/2P 20/1



Life Expectancy Diagram - 5PL-C/LED/13V/840/IF5/P/2P 20/1

Lumen Maintenance Diagram - 5PL-C/LED/13V/840/IF5/P/2P 20/1

