



PL-C/T

5.5PL-C/LED/13V/830/IF5/P/4P 20/1

Philips PLED 4-pin & 2-pin lamps are an affordable LED solution to replace compact fluorescent lamps. The product provides a natural lighting effect for use in many lighting applications, and provides instant energy savings, making them an environmentally-friendly solution. Available as replacements for 13W, 26W and 32W compact fluorescent lamps.

Product data

General Information	
Cap-Base	G24Q [G24q]
Nominal lifetime	50,000 hour(s)
Switching Cycle	50,000
Lighting Technology	LED
EU RoHS compliant	Yes
Light Technical	
Color Code	830 [CCT of 3000K]
Beam Angle (Nom)	150 degree(s)
Luminous Flux	550 lm
Color Designation	White (WH)
Correlated Color Temperature (Nom)	3000 K
Luminous Efficacy (rated) (Nom)	100.00 lm/W
Color Consistency	<6
Color rendering index (CRI)	82
LLMF At End Of Nominal Lifetime (Nom)	70 %
Operating and Electrical	
Line Frequency	25000-100000 Hz
Input Frequency	25000-100000 Hz
Power Consumption	5.5 W

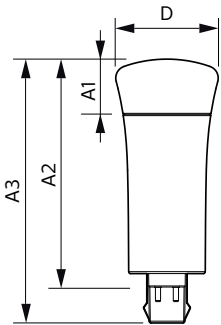
Lamp Current (Max)	280 mA
Lamp Current (Min)	130 mA
Starting Time (Nom)	0.5 s
Warm-up time to 60% light	0.5 s
Power Factor (Fraction)	0.9
Voltage (Nom)	14-60 V
UL Type	Type A - works on ballast
Temperature	
Ambient temperature range	-4 °F to 113 °F
T-Case Maximum (Nom)	158 °F
Controls and Dimming	
Dimmable	Yes
Mechanical and Housing	
Bulb Material	Plastic
Product Length	3-15/16 inch
Bulb Shape	PL-C
Approval and Application	
Energy Saving Product	Yes

PL-C/T

Approval Marks	RoHS compliance UL certificate
Energy Consumption kWh/1000 h	- kWh
Product Data	
Order product name	5.5PL-C/LED/13V/830/IF5/P/4P 20/1
Full product name	5.5PL-C/LED/13V/830/IF5/P/4P 20/1
Order code	532440

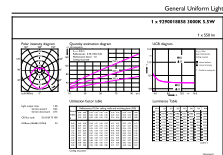
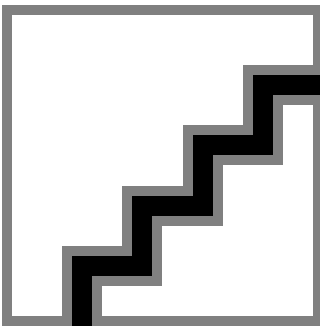
Material Nr. (12NC)	929001885804
Numerator - Quantity Per Pack	1
EAN/UPC - Product/Case	046677532444
Numerator - Packs per outer box	20
EAN/UPC - Case	50046677532449

Dimensional drawing



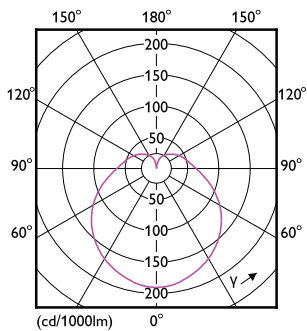
Product	D	A1	A2	A3
5.5PL-C/LED/13V/830/IF5/P/4P 20/1	1-13/16 inch	1 inch	4 inch	4-5/8 inch

Photometric data



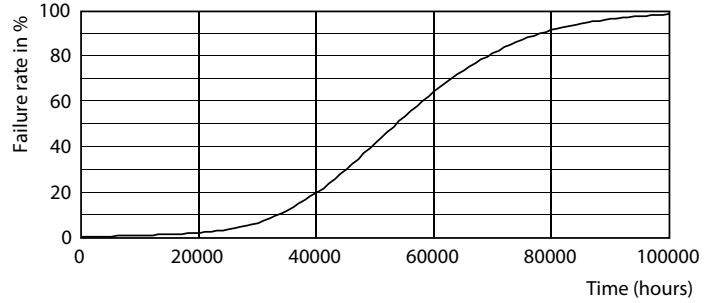
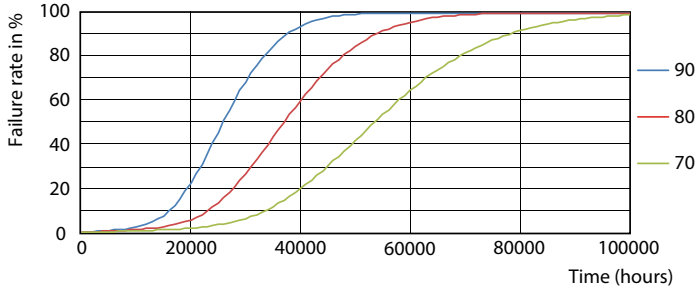
Spectral Power Distribution Colour - 5.5PL-C/LED/13V/830/IF5/P/4P 20/1

General uniform lighting - 5.5PL-C/LED/13V/830/IF5/P/4P 20/1

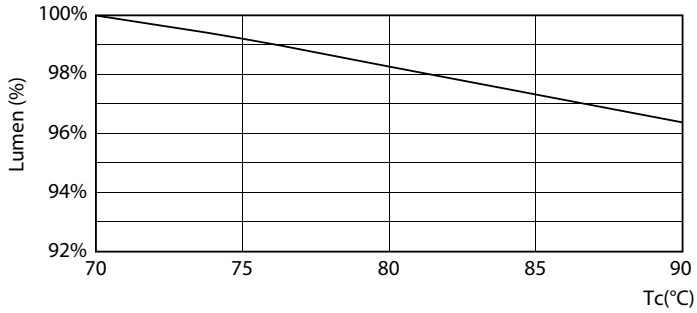


Light Distribution Diagram - 5.5PL-C/LED/13V/830/IF5/P/4P 20/1

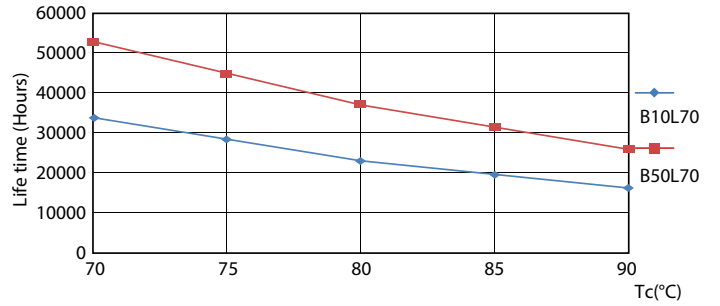
Lifetime



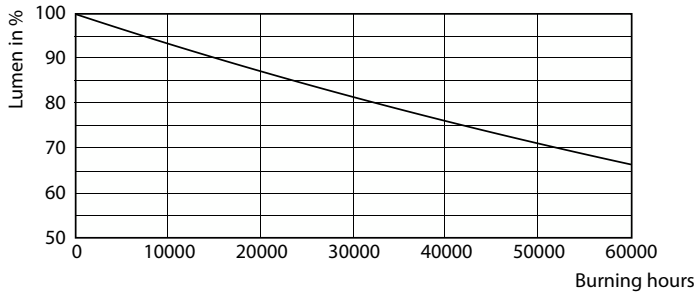
Life Expectancy Diagram - 5.5PL-C/LED/13V/830/IF5/P/4P 20/1



Life Expectancy Diagram - 5.5PL-C/LED/13V/830/IF5/P/4P 20/1



Lumen Maintenance Diagram - 5.5PL-C/LED/13V/830/IF5/P/4P 20/1



Life Expectancy Diagram - 5.5PL-C/LED/13V/830/IF5/P/4P 20/1

Lumen Maintenance Diagram - 5.5PL-C/LED/13V/830/IF5/P/4P 20/1

