



# CorePro MainsFit (UL Type-B) T8

## 8.5T8/COR/24-840/MF11/G 10/1

The CorePro MainsFit (UL Type B) lamps are designed to be the perfect retrofit solution to move from traditional fluorescent lamps to energy saving LEDs. This ballast bypass lamp has everything needed built into the lamp with proven energy savings, long life (up to 50k hours), surge suppression and industry leading safety features. All lamps in the CorePro MainsFit family are double-ended to help simplify the installation. In addition, all lamps meet the Philips standards for light quality so that end users will be in a comfortable environment regardless of the CorePro MainsFit lamp type.

### Product data

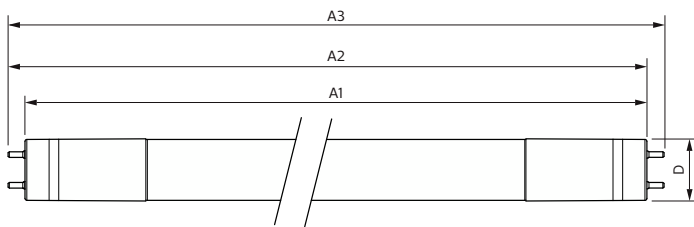
General Information		LLMF At End Of Nominal Lifetime (Nom) 70 %	
Cap-Base	G13 [Medium Bi-Pin Fluorescent]		
Nominal lifetime	50,000 hour(s)		
Switching Cycle	50,000		
Lighting Technology	LED		
EU RoHS compliant	Yes		
Light Technical		Operating and Electrical	
Color Code	840 [CCT of 4000K]	Line Frequency	50 to 60 Hz
Beam Angle (Nom)	180 degree(s)	Input Frequency	50 to 60 Hz
Luminous Flux	1,150 lm	Power Consumption	8.5 W
Color Designation	Cool White (CW)	Lamp Current (Max)	75 mA
Correlated Color Temperature (Nom)	4000 K	Lamp Current (Min)	36 mA
Luminous Efficacy (rated) (Nom)	135.00 lm/W	Wattage Equivalent	17 W
Color Consistency	<6	Starting Time (Nom)	0.9 s
Color rendering index (CRI)	82	Warm-up time to 60% light	0.9 s
		Power Factor (Fraction)	0.9
		Voltage (Nom)	120-277 V
		UL Type	UL Type B
		Temperature	
		Ambient temperature range	-4 °F to 113 °F

# CorePro MainsFit (UL Type-B) T8

T-Case Maximum (Nom)	122 °F
<b>Controls and Dimming</b>	
Dimmable	No
<b>Mechanical and Housing</b>	
Bulb Finish	Frosted
Bulb Material	Glass
Product Length	23-5/8 inch
Bulb Shape	T8
<b>Approval and Application</b>	
Energy Saving Product	Yes
Approval Marks	UL certificate RoHS compliance DLC compliance
Energy Consumption kWh/1000 h	- kWh

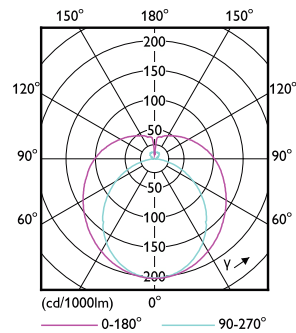
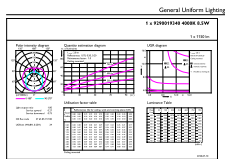
Energy Certifications	DLC Standard
<b>Application Conditions</b>	
can it be used in closed luminaires	Yes
<b>Product Data</b>	
Order product name	8.5T8/COR/24-840/MF1/G 10/1
Full product name	8.5T8/COR/24-840/MF1/G 10/1
Order code	535476
Material Nr. (12NC)	929001934004
Numerator - Quantity Per Pack	1
EAN/UPC - Product/Case	046677535476
Numerator - Packs per outer box	10
EAN/UPC - Case	50046677535471

## Dimensional drawing



Product	D	A1	A2	A3
8.5T8/COR/24-840/MF1/G 10/1	1-1/16 inch	23-1/4 inch	23-1/2 inch	23-13/16 inch

## Photometric data

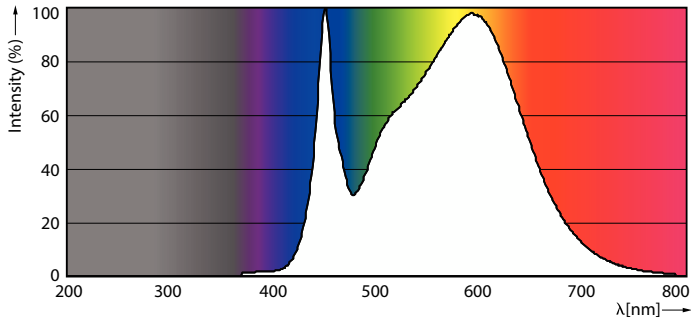


General uniform lighting - 8.5T8/COR/24-840/MF1/G 10/1

Light Distribution Diagram - 8.5T8/COR/24-840/MF1/G 10/1

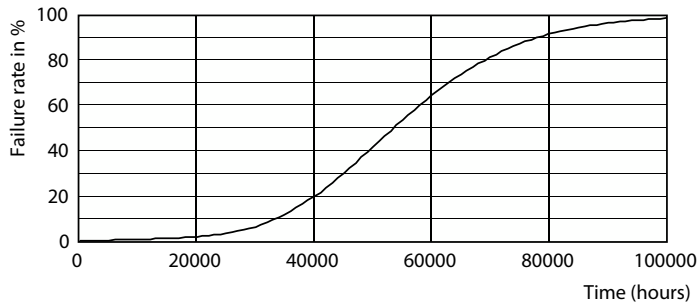
# CorePro MainsFit (UL Type-B) T8

## Photometric data

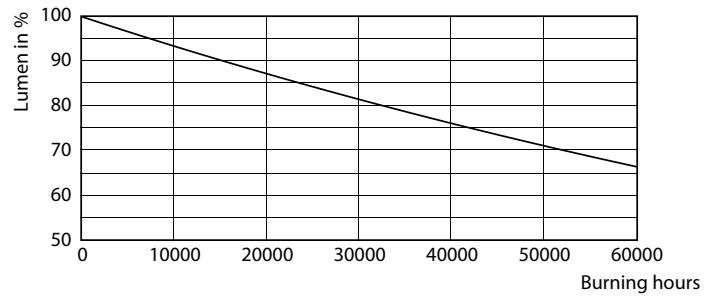


Spectral Power Distribution Colour - 8.5T8/COR/24-840/MF11/G 10/1

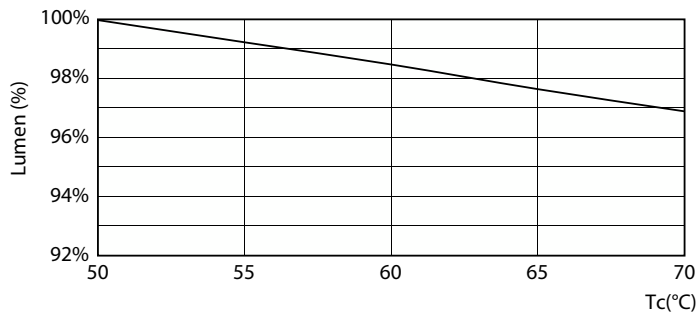
## Lifetime



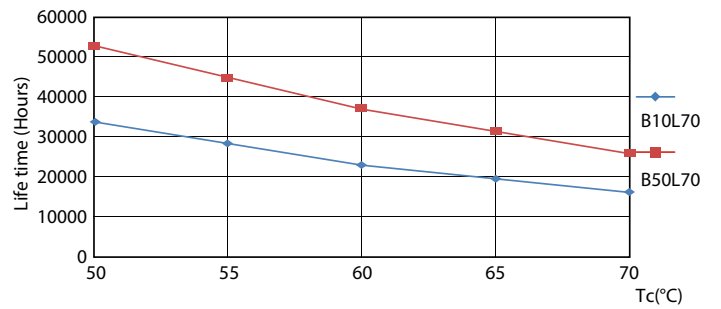
Life Expectancy Diagram - 8.5T8/COR/24-840/MF11/G 10/1



Lumen Maintenance Diagram - 8.5T8/COR/24-840/MF11/G 10/1



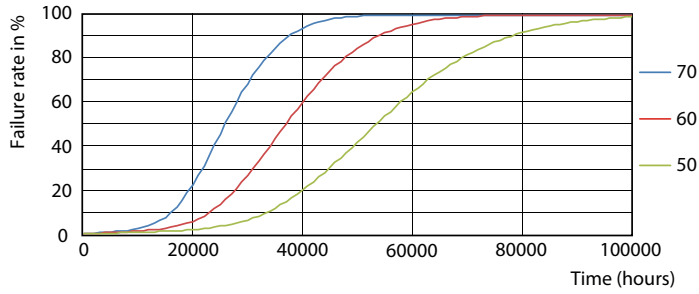
Lumen Maintenance Diagram - 8.5T8/COR/24-840/MF11/G 10/1



Life Expectancy Diagram - 8.5T8/COR/24-840/MF11/G 10/1

# CorePro MainsFit (UL Type-B) T8

## Lifetime



Life Expectancy Diagram - 8.5T8/COR/24-840/MF11/G 10/1

