



CorePro MainsFit (UL Type-B) T8

15.5T8-6U/COR/24-850/MF21/G 10/1

The CorePro MainsFit (UL Type B) lamps are designed to be the perfect retrofit solution to move from traditional fluorescent lamps to energy saving LEDs. This ballast bypass lamp has everything needed built into the lamp with proven energy savings, long life (up to 50k hours), surge suppression and industry leading safety features. All lamps in the CorePro MainsFit family are double-ended to help simplify the installation. In addition, all lamps meet the Philips standards for light quality so that end users will be in a comfortable environment regardless of the CorePro MainsFit lamp type.

Product data

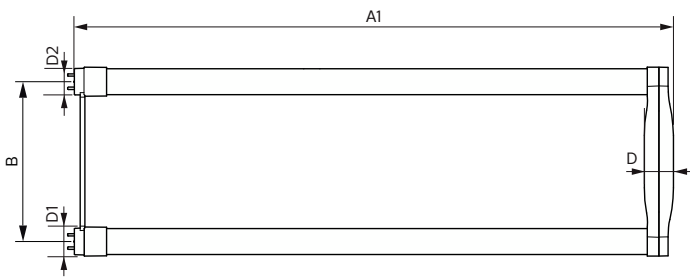
General Information		LLMF At End Of Nominal Lifetime (Nom) 70 %	
Cap-Base	2G13 [2G13]		
Nominal lifetime	50,000 hour(s)		
Switching Cycle	50,000		
Lighting Technology	LED		
EU RoHS compliant	Yes		
Light Technical		Operating and Electrical	
Color Code	850 [CCT of 5000K]	Line Frequency	50 to 60 Hz
Beam Angle (Nom)	180 degree(s)	Input Frequency	50 to 60 Hz
Luminous Flux	2,100 lm	Power Consumption	15.5 W
Color Designation	Daylight	Lamp Current (Max)	140 mA
Correlated Color Temperature (Nom)	5000 K	Lamp Current (Min)	63 mA
Luminous Efficacy (rated) (Nom)	135.00 lm/W	Wattage Equivalent	32 W
Color Consistency	<5	Starting Time (Nom)	0.9 s
Color rendering index (CRI)	82	Warm-up time to 60% light	0.9 s
		Power Factor (Fraction)	0.9
		Voltage (Nom)	120-277 V
		UL Type	UL Type B
		Temperature	
		Ambient temperature range	-4 °F to 113 °F

CorePro MainsFit (UL Type-B) T8

T-Case Maximum (Nom)	124 °F
Controls and Dimming	
Dimmable	No
Mechanical and Housing	
Bulb Finish	Frosted
Bulb Material	Glass
Product Length	23-5/8 inch
Bulb Shape	T8
Approval and Application	
Energy Saving Product	Yes
Approval Marks	UL certificate RoHS compliance DLC compliance
Energy Consumption kWh/1000 h	- kWh

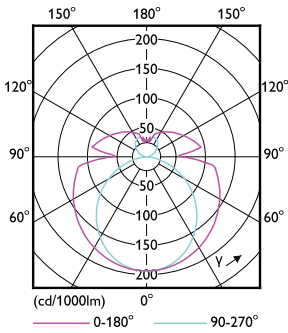
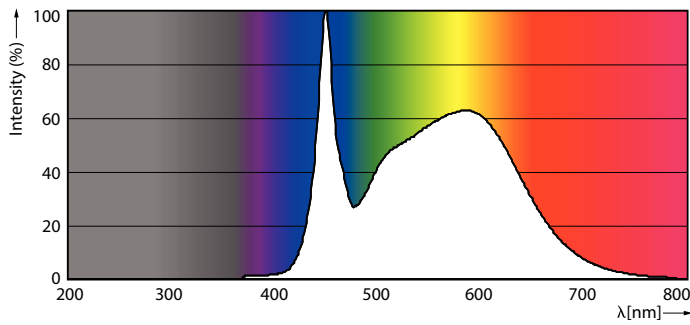
Energy Certifications	DLC Standard
Application Conditions	
can it be used in closed luminaires	Yes
Product Data	
Order product name	15.5T8-6U/COR/24-850/MF21/G 10/1
Full product name	15.5T8-6U/COR/24-850/MF21/G 10/1
Order code	535567
Material Nr. (12NC)	929001934904
Numerator - Quantity Per Pack	1
EAN/UPC - Product/Case	046677535568
Numerator - Packs per outer box	10
EAN/UPC - Case	50046677535563

Dimensional drawing



Product	D1	D2	B	A1	D
15.5T8-6U/COR/24-850/MF21/G 10/1	1-1/16 inch	1-1/8 inch	6 inch	22-1/2 inch	1-1/8 inch

Photometric data

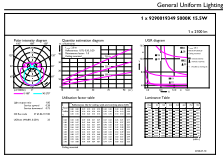


Spectral Power Distribution Colour - 15.5T8-6U/COR/24-850/MF21/G 10/1

Light Distribution Diagram - 15.5T8-6U/COR/24-850/MF21/G 10/1

CorePro MainsFit (UL Type-B) T8

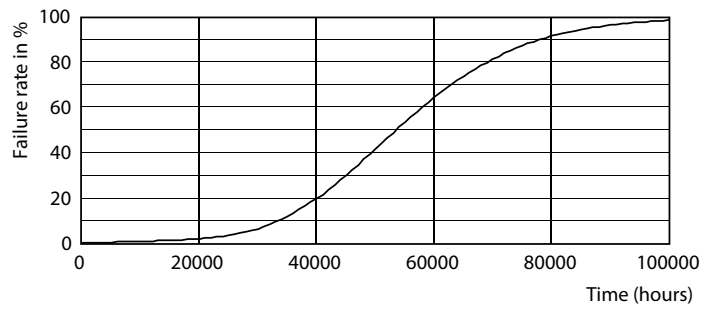
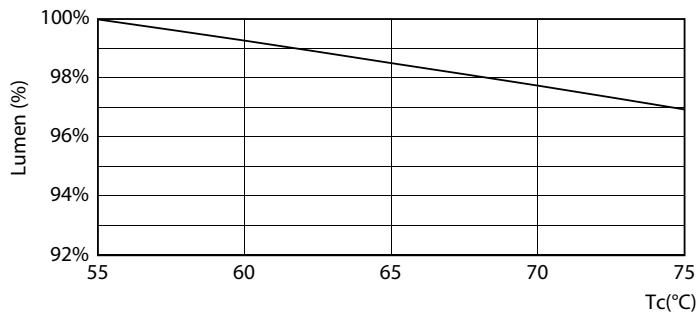
Photometric data



© 2023 Philips Lighting B.V. Page 11 of 11

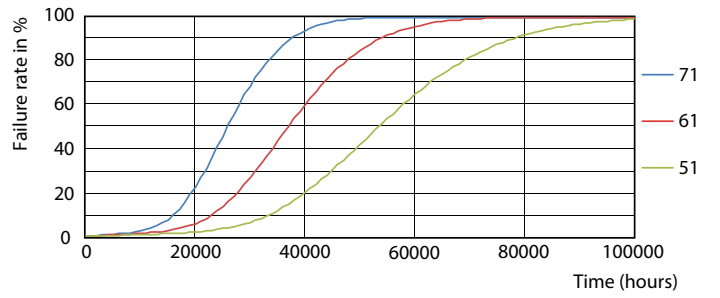
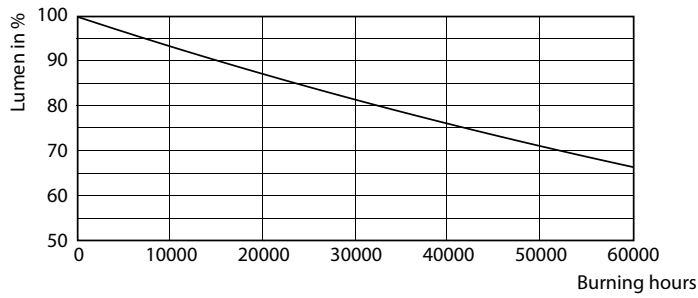
General uniform lighting - 15.5T8-6U/COR/24-850/MF21/G 10/1

Lifetime



Lumen Maintenance Diagram - 15.5T8-6U/COR/24-850/MF21/G 10/1

Life Expectancy Diagram - 15.5T8-6U/COR/24-850/MF21/G 10/1

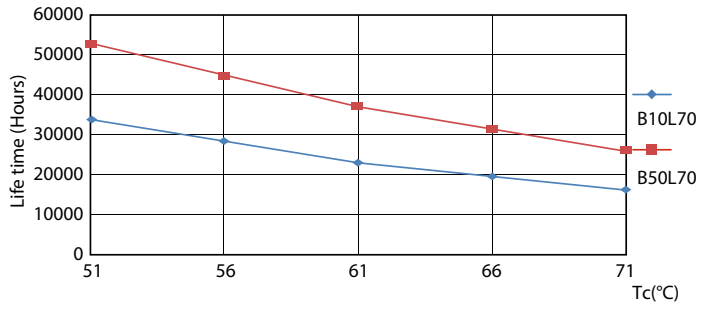


Lumen Maintenance Diagram - 15.5T8-6U/COR/24-850/MF21/G 10/1

Life Expectancy Diagram - 15.5T8-6U/COR/24-850/MF21/G 10/1

CorePro MainsFit (UL Type-B) T8

Lifetime



Life Expectancy Diagram - 15.5T8-6U/COR/24-850/MF21/G 10/1

