

# T5

## 25T5HO/COR/46-840/MF35/G 25/1

Philips T5 LED tubes offer an affordable, energy saving retrofit solution. The T5 lamps have been engineered to withstand the test of time with a 50,000-hour lifetime and a limited 5-year warranty to back it up. The lighting performance effectively replaces conventional fluorescent T5 HO or T5 HE lamps. Available in either InstantFit (Type A or Type C) or MainsFit (Type B / Ballast bypass), Philips T5 TLEDs provide a variety of options for any application.

### Product data

General Information	
Cap-Base	G5 [G5]
Nominal lifetime	50,000 hour(s)
Switching Cycle	50,000
Lighting Technology	LED
EU RoHS compliant	Yes
Light Technical	
Color Code	840 [CCT of 4000K]
Beam Angle (Nom)	200 degree(s)
Luminous Flux	3,500 lm
Color Designation	Cool White (CW)
Correlated Color Temperature (Nom)	4000 K
Luminous Efficacy (rated) (Nom)	140.00 lm/W
Color Consistency	<6
Color rendering index (CRI)	80
LLMF At End Of Nominal Lifetime (Nom)	70 %
Operating and Electrical	
Line Frequency	50 to 60 Hz
Input Frequency	50 to 60 Hz

Power Consumption	25 W
Lamp Current (Max)	210 mA
Lamp Current (Min)	95 mA
Wattage Equivalent	54 W
Starting Time (Nom)	0.45 s
Warm-up time to 60% light	0.5 s
Power Factor (Fraction)	0.9
Voltage (Nom)	120-277 V
UL Type	Type B - bypass the ballast
Temperature	
Ambient temperature range	-4 °F to 113 °F
T-Case Maximum (Nom)	167 °F
Controls and Dimming	
Dimmable	No
Mechanical and Housing	
Bulb Finish	Frosted
Bulb Material	Glass
Product Length	47-1/4 inch

# T5

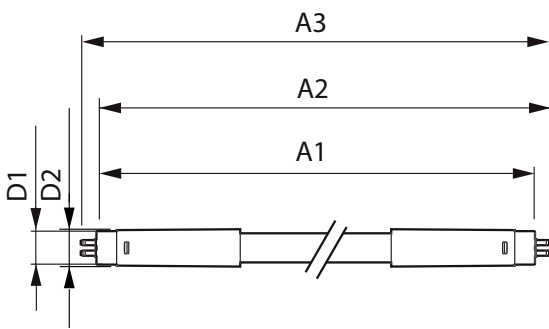
Bulb Shape	T5
<b>Approval and Application</b>	
Energy Saving Product	Yes
Approval Marks	RoHS compliance UL certificate DLC compliance
Energy Consumption kWh/1000 h	- kWh

## Product Data

Order product name	25T5HO/COR/46-840/MF35/G 25/1
--------------------	-------------------------------

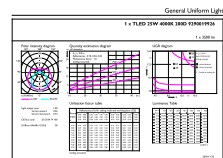
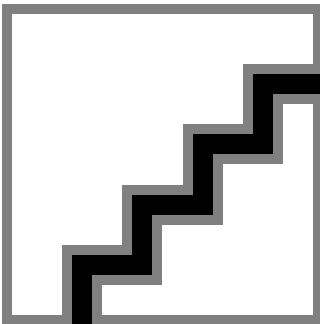
Full product name	25T5HO/COR/46-840/MF35/G 25/1
Order code	542068
Material Nr. (12NC)	929001992604
Numerator - Quantity Per Pack	1
EAN/UPC - Product/Case	046677542061
Numerator - Packs per outer box	25
EAN/UPC - Case	50046677542066

## Dimensional drawing



Product	D1	D2	A1	A2	A3
25T5HO/COR/46-840/MF35/G 25/1	5/8 inch	3/4 inch	45-3/16 inch	45-1/2 inch	45-3/4 inch

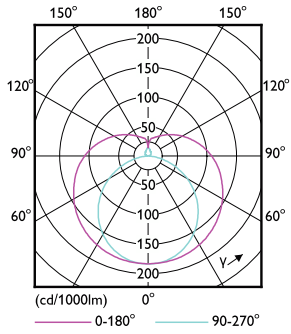
## Photometric data



Spectral Power Distribution Colour - 25T5HO/COR/46-840/MF35/G 25/1

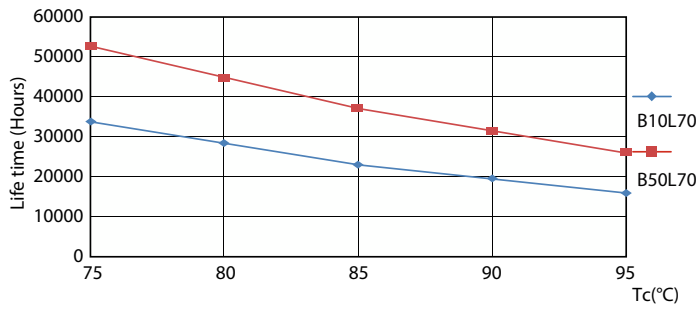
Accent Lighting Spots - 25T5HO/COR/46-840/MF35/G 25/1

Photometric data

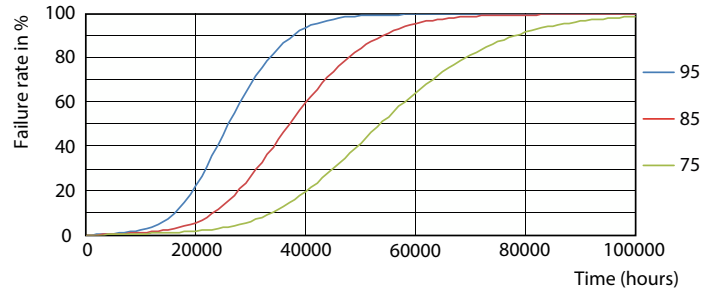


Light Distribution Diagram - 25T5HO/COR/46-840/MF35/G 25/1

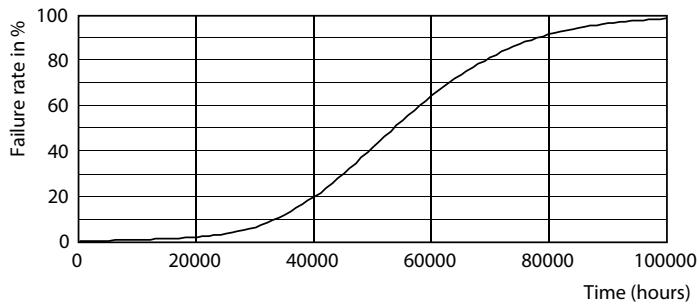
Lifetime



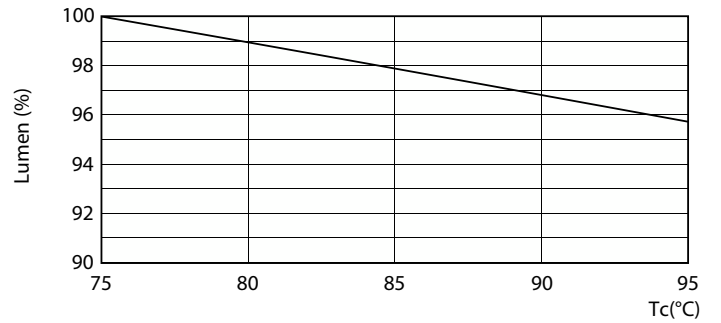
Life Expectancy Diagram - 25T5HO/COR/46-840/MF35/G 25/1



Life Expectancy Diagram - 25T5HO/COR/46-840/MF35/G 25/1



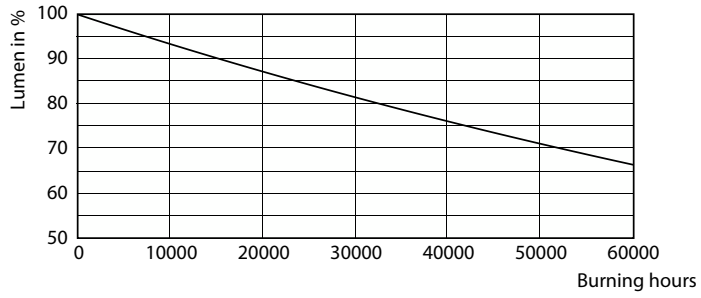
Life Expectancy Diagram - 25T5HO/COR/46-840/MF35/G 25/1



Lumen Maintenance Diagram - 25T5HO/COR/46-840/MF35/G 25/1

# T5

## Lifetime



Lumen Maintenance Diagram - 25T5HO/COR/46-840/MF35/G 25/1

