



T5

25T5HO/COR/46-850/MF35/G 25/1

Philips T5 LED tubes offer an affordable, energy saving retrofit solution. The T5 lamps have been engineered to withstand the test of time with a 50,000-hour lifetime and a limited 5-year warranty to back it up. The lighting performance effectively replaces conventional fluorescent T5 HO or T5 HE lamps. Available in either InstantFit (Type A or Type C) or MainsFit (Type B / Ballast bypass), Philips T5 TLEDs provide a variety of options for any application.

Product data

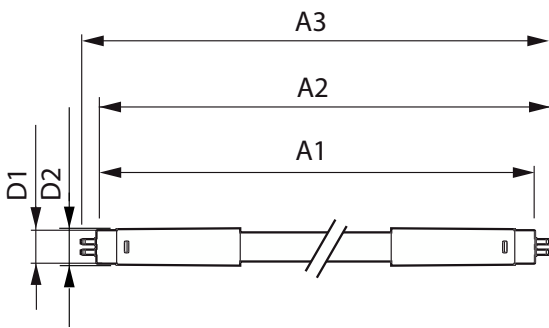
General Information		Power Consumption	
Cap-Base	G5 [G5]	Power Consumption	25 W
Nominal lifetime	50,000 hour(s)	Lamp Current (Max)	210 mA
Switching Cycle	50,000	Lamp Current (Min)	95 mA
Lighting Technology	LED	Wattage Equivalent	54 W
EU RoHS compliant	Yes	Starting Time (Nom)	0.45 s
		Warm-up time to 60% light	0.5 s
		Power Factor (Fraction)	0.9
		Voltage (Nom)	120-277 V
		UL Type	TLED_Type B; UL classified double end
Light Technical		Temperature	
Color Code	850 [CCT of 5000K]	Ambient temperature range	-4 °F to 113 °F
Beam Angle (Nom)	200 degree(s)	T-Case Maximum (Nom)	167 °F
Luminous Flux	3,500 lm		
Color Designation	Daylight	Controls and Dimming	
Correlated Color Temperature (Nom)	5000 K	Dimmable	No
Luminous Efficacy (rated) (Nom)	140.00 lm/W		
Color Consistency	<5	Mechanical and Housing	
Color rendering index (CRI)	80	Bulb Finish	Frosted
LLMF At End Of Nominal Lifetime (Nom)	70 %	Bulb Material	Glass
		Product Length	47-1/4 inch
Operating and Electrical			
Line Frequency	50 to 60 Hz		
Input Frequency	50 to 60 Hz		

T5

Bulb Shape	T5
Approval and Application	
Energy Saving Product	Yes
Approval Marks	RoHS compliance UL certificate DLC compliance
Energy Consumption kWh/1000 h	- kWh
Application Conditions	
can it be used in closed luminaires	Yes

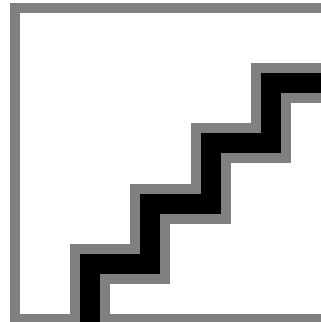
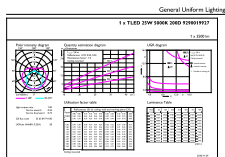
Product Data	
Order product name	25T5HO/COR/46-850/MF35/G 25/1
Full product name	25T5HO/COR/46-850/MF35/G 25/1
Order code	542076
Material Nr. (12NC)	929001992704
Numerator - Quantity Per Pack	1
EAN/UPC - Product/Case	046677542078
Numerator - Packs per outer box	25
EAN/UPC - Case	50046677542073

Dimensional drawing



Product	D1	D2	A1	A2	A3
25T5HO/COR/46-850/MF35/G 25/1	15.3 mm	18.6 mm	1,147.8 mm	1,154.9 mm	1,162 mm

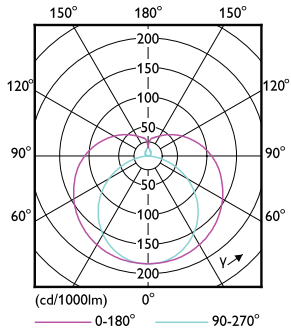
Photometric data



Accent Lighting Spots - 25T5HO/COR/46-850/MF35/G 25/1

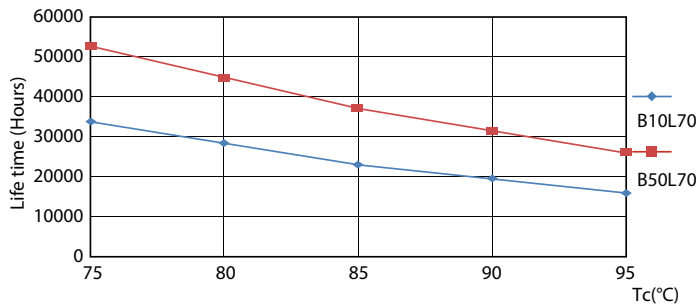
Spectral Power Distribution Colour - 25T5HO/COR/46-850/MF35/G 25/1

Photometric data

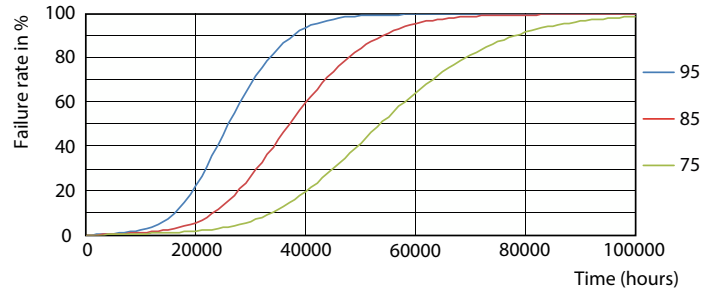


Light Distribution Diagram - 25T5HO/COR/46-850/MF35/G 25/1

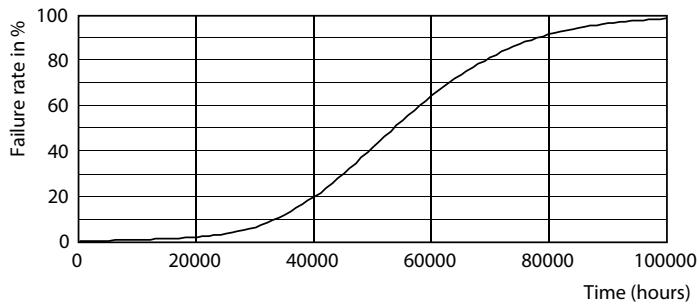
Lifetime



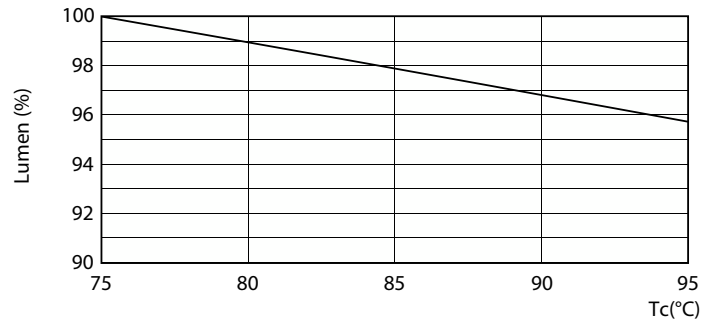
Life Expectancy Diagram - 25T5HO/COR/46-850/MF35/G 25/1



Life Expectancy Diagram - 25T5HO/COR/46-850/MF35/G 25/1



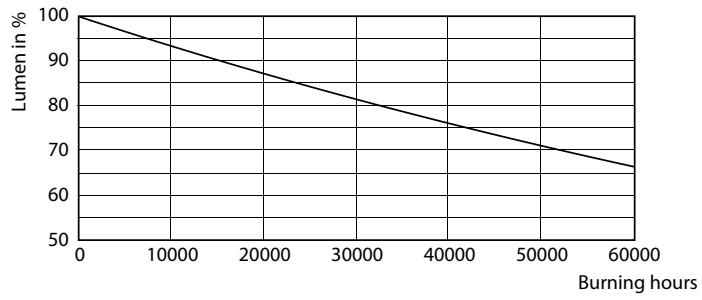
Life Expectancy Diagram - 25T5HO/COR/46-850/MF35/G 25/1



Lumen Maintenance Diagram - 25T5HO/COR/46-850/MF35/G 25/1

T5

Lifetime



Lumen Maintenance Diagram - 25T5HO/COR/46-850/MF35/G 25/1

