



T8

34T8/COR/96-850/MF42/G/FA8 10/1

Our TLEDs are available in InstantFit (Type A / Type C) or MainsFit (Ballast bypass / Type B) versions. The InstantFit lamps work on a broad variety of ballasts and LED drivers. Only InstantFit has over 15,000 lamp & ballast combinations delivering even light output, energy savings and a long lifetime. Our MainsFit products feature a double-ended design, simplifying installation while a proprietary safety circuit minimizes a shock risk. Lamp sizes range from 2-foot to 8-foot and U-bend with a variety of lumen outputs.

Product data

General Information		Input Frequency	
Cap-Base	FA8 [FA8]	Power Consumption	50 to 60 Hz
Nominal lifetime	50,000 hour(s)	Lamp Current (Max)	34 W
Switching Cycle	50,000	Lamp Current (Min)	290 mA
Lighting Technology	LED	Starting Time (Nom)	133 mA
EU RoHS compliant	Yes	Warm-up time to 60% light	0.5 s
		Power Factor (Fraction)	0.9
Light Technical		Voltage (Nom)	120-277 V
Color Code	850 [CCT of 5000K]	UL Type	Type B - bypass the ballast
Beam Angle (Nom)	240 degree(s)		
Luminous Flux	4,200 lm	Temperature	
Color Designation	Daylight	Ambient temperature range	-4 °F to 113 °F
Correlated Color Temperature (Nom)	5000 K	T-Case Maximum (Nom)	113 °F
Luminous Efficacy (rated) (Nom)	123.00 lm/W		
Color Consistency	<5	Controls and Dimming	
Color rendering index (CRI)	82	Dimmable	No
LLMF At End Of Nominal Lifetime (Nom)	70 %		
Operating and Electrical		Mechanical and Housing	
Line Frequency	50 to 60 Hz	Bulb Finish	Frosted
		Bulb Material	Glass

T8

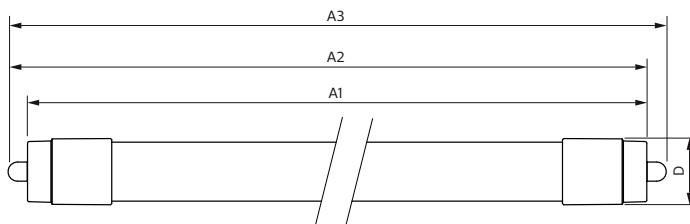
Product Length	94-1/2 inch
Bulb Shape	T8
Approval and Application	
Energy Saving Product	Yes
Approval Marks	RoHS compliance UL certificate DLC compliance
Energy Consumption kWh/1000 h	- kWh

Product Data

Order product name	34T8/COR/96-850/MF42/G/FA8 10/1
--------------------	---------------------------------

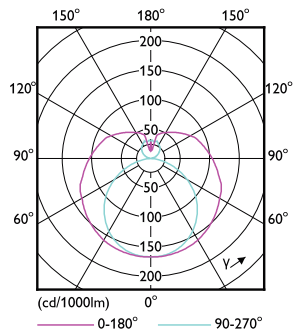
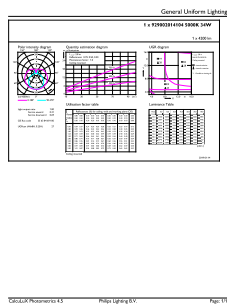
Full product name	34T8/COR/96-850/MF42/G/FA8 10/1
Order code	545277
Material Nr. (12NC)	929002014104
Numerator - Quantity Per Pack	1
EAN/UPC - Product/Case	046677545277
Numerator - Packs per outer box	10
EAN/UPC - Case	50046677545272

Dimensional drawing



Product	D1	D2	A1	A2	A3
34T8/COR/96-850/MF42/G/FA8 10/1	1-1/8 inch	1-1/8 inch	93-5/16 inch	93-11/16 inch	94-1/16 inch

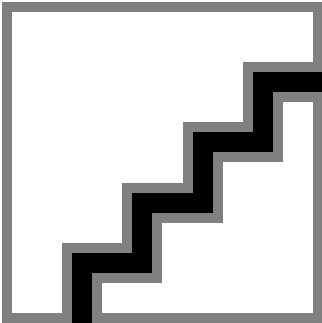
Photometric data



General uniform lighting - 34T8/COR/96-850/MF42/G/FA8 10/1

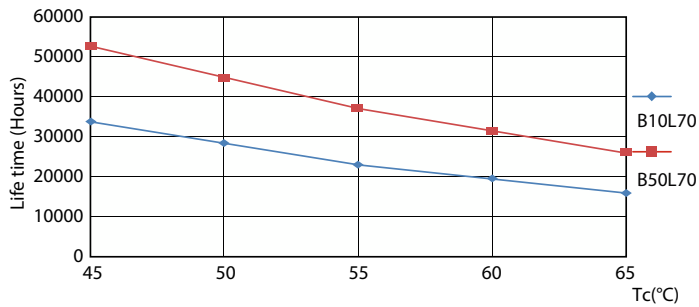
Light Distribution Diagram - 34T8/COR/96-850/MF42/G/FA8 10/1

Photometric data

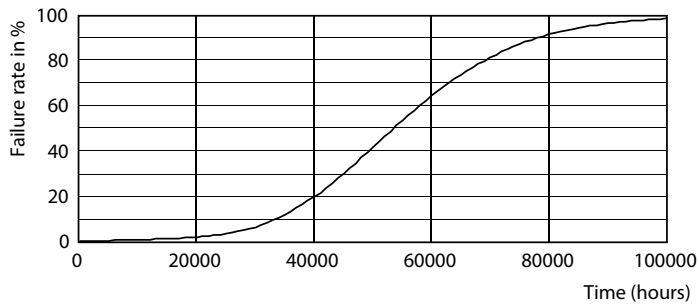


Spectral Power Distribution Colour - 34T8/COR/96-850/MF42/G/FA8 10/1

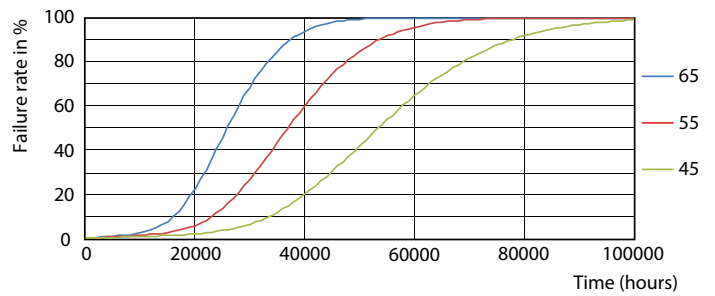
Lifetime



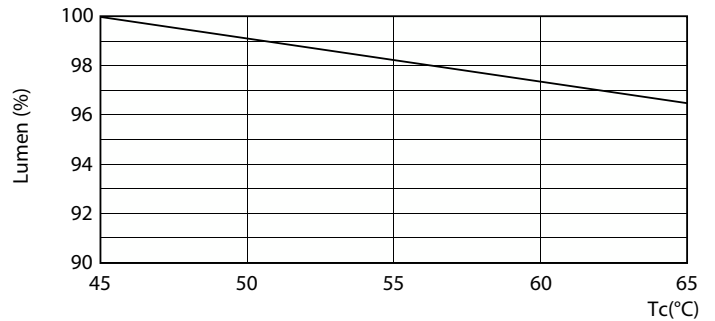
Life Expectancy Diagram - 34T8/COR/96-850/MF42/G/FA8 10/1



Life Expectancy Diagram - 34T8/COR/96-850/MF42/G/FA8 10/1



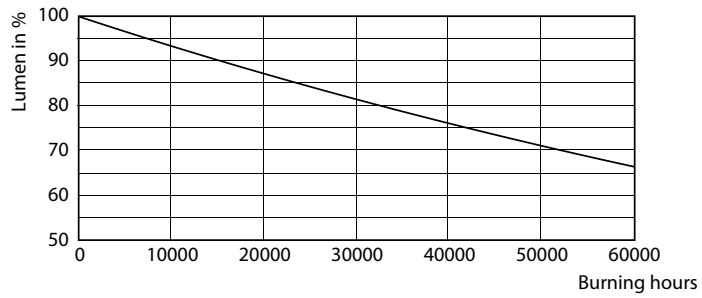
Life Expectancy Diagram - 34T8/COR/96-850/MF42/G/FA8 10/1



Lumen Maintenance Diagram - 34T8/COR/96-850/MF42/G/FA8 10/1

T8

Lifetime



Lumen Maintenance Diagram - 34T8/COR/96-850/MF42/G/FA8 10/1

