



T8

44T8HO/COR/96-850/MF54/G/R17d 10/1

Our TLEDs are available in InstantFit (Type A / Type C) or MainsFit (Ballast bypass / Type B) versions. The InstantFit lamps work on a broad variety of ballasts and LED drivers. Only InstantFit has over 15,000 lamp & ballast combinations delivering even light output, energy savings and a long lifetime. Our MainsFit products feature a double-ended design, simplifying installation while a proprietary safety circuit minimizes a shock risk. Lamp sizes range from 2-foot to 8-foot and U-bend with a variety of lumen outputs.

Product data

General Information	
Cap-Base	R17D [R17d (RDC)]
Nominal lifetime	50,000 hour(s)
Switching Cycle	50,000
Lighting Technology	LED
EU RoHS compliant	Yes
Light Technical	
Color Code	850 [CCT of 5000K]
Beam Angle (Nom)	240 degree(s)
Luminous Flux	5,400 lm
Color Designation	Daylight
Correlated Color Temperature (Nom)	5000 K
Luminous Efficacy (rated) (Nom)	122.00 lm/W
Color Consistency	<5
Color rendering index (CRI)	82
LLMF At End Of Nominal Lifetime (Nom)	70 %
Operating and Electrical	
Line Frequency	50 to 60 Hz

Input Frequency	50 to 60 Hz
Power Consumption	44 W
Lamp Current (Max)	375 mA
Lamp Current (Min)	168 mA
Wattage Equivalent	96 W
Starting Time (Nom)	0.5 s
Warm-up time to 60% light	0.5 s
Power Factor (Fraction)	0.9
Voltage (Nom)	120-277 V
UL Type	Type B - bypass the ballast
Temperature	
Ambient temperature range	-4 °F to 113 °F
T-Case Maximum (Nom)	131 °F
Controls and Dimming	
Dimmable	No
Mechanical and Housing	
Bulb Finish	Frosted

T8

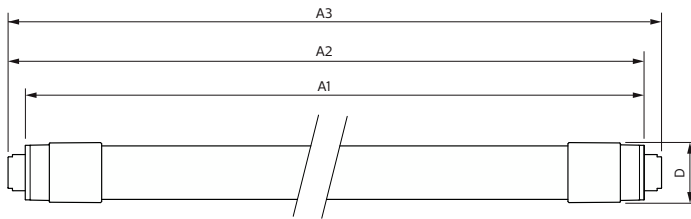
Bulb Material	Glass
Product Length	94-1/2 inch
Bulb Shape	Tube, double-ended
Approval and Application	
Energy Saving Product	Yes
Approval Marks	RoHS compliance UL certificate DLC compliance
Energy Consumption kWh/1000 h	- kWh

Product Data

Order product name	44T8HO/COR/96-850/MF54/G/R17d 10/1
---------------------------	------------------------------------

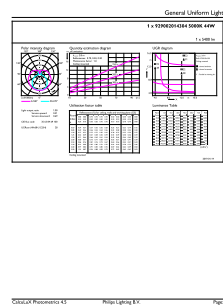
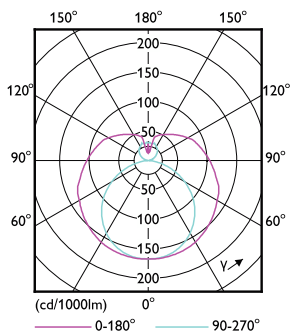
Full product name	44T8HO/COR/96-850/MF54/G/R17d 10/1
Order code	545293
Material Nr. (12NC)	929002014304
Numerator - Quantity Per Pack	1
EAN/UPC - Product/Case	046677545291
Numerator - Packs per outer box	10
EAN/UPC - Case	50046677545296

Dimensional drawing



Product	D1	D2	A1	A2	A3
44T8HO/COR/96-850/ MF54/G/R17d 10/1	1-1/8 inch	1-1/8 inch	93-5/16 inch	93-11/16 inch	94-1/16 inch

Photometric data



Light Distribution Diagram - 44T8HO/COR/96-850/MF54/G/R17d 10/1

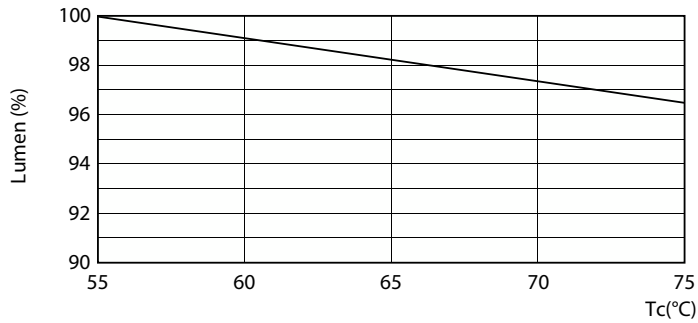
General uniform lighting - 44T8HO/COR/96-850/MF54/G/R17d 10/1

Photometric data

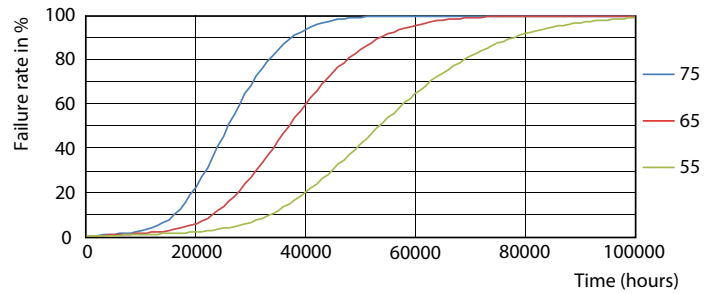


Spectral Power Distribution Colour - 44T8HO/COR/96-850/MF54/G/R17d 10/1

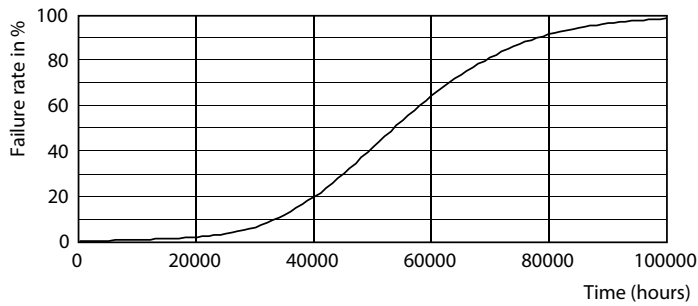
Lifetime



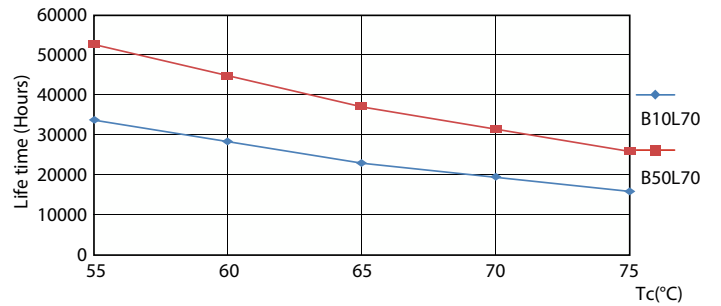
Lumen Maintenance Diagram - 44T8HO/COR/96-850/MF54/G/R17d 10/1



Life Expectancy Diagram - 44T8HO/COR/96-850/MF54/G/R17d 10/1



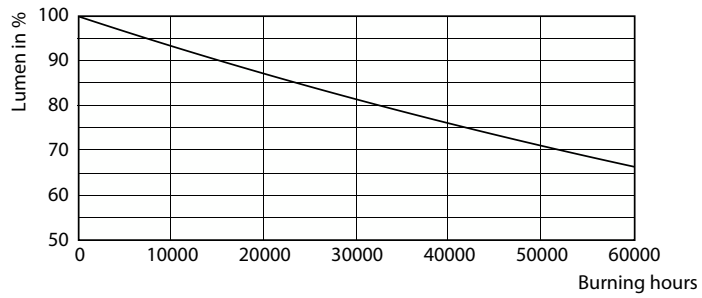
Life Expectancy Diagram - 44T8HO/COR/96-850/MF54/G/R17d 10/1



Life Expectancy Diagram - 44T8HO/COR/96-850/MF54/G/R17d 10/1

T8

Lifetime



Lumen Maintenance Diagram - 44T8HO/COR/96-850/MF54/G/R17d 10/1

