

T8

15T8/COR/48-850/MF21/G 10/1

Our TLEDs are available in InstantFit (Type A / Type C) or MainsFit (Ballast bypass / Type B) versions. The InstantFit lamps work on a broad variety of ballasts and LED drivers. Only InstantFit has over 15,000 lamp & ballast combinations delivering even light output, energy savings and a long lifetime. Our MainsFit products feature a double-ended design, simplifying installation while a proprietary safety circuit minimizes a shock risk. Lamp sizes range from 2-foot to 8-foot and U-bend with a variety of lumen outputs.

Product data

General Information		Input Frequency	
Cap-Base	G13 [Medium Bi-Pin Fluorescent]	Power Consumption	15 W
Nominal lifetime	50,000 hour(s)	Lamp Current (Max)	125 mA
Switching Cycle	50,000	Lamp Current (Min)	55 mA
Lighting Technology	LED	Wattage Equivalent	32 W
EU RoHS compliant	Yes	Starting Time (Nom)	0.5 s
		Warm-up time to 60% light	0.5 s
Light Technical		Power Factor (Fraction)	0.9
Color Code	850 [CCT of 5000K]	Voltage (Nom)	120-277 V
Beam Angle (Nom)	240 degree(s)	UL Type	Type B - bypass the ballast
Luminous Flux	2,100 lm	Temperature	
Color Designation	Daylight	Ambient temperature range	-4 °F to 113 °F
Correlated Color Temperature (Nom)	5000 K	T-Case Maximum (Nom)	158 °F
Luminous Efficacy (rated) (Nom)	140.00 lm/W	Controls and Dimming	
Color Consistency	<5	Dimmable	No
Color rendering index (CRI)	82	Mechanical and Housing	
LLMF At End Of Nominal Lifetime (Nom)	70 %	Bulb Finish	Frosted
Operating and Electrical			
Line Frequency	50 to 60 Hz		

T8

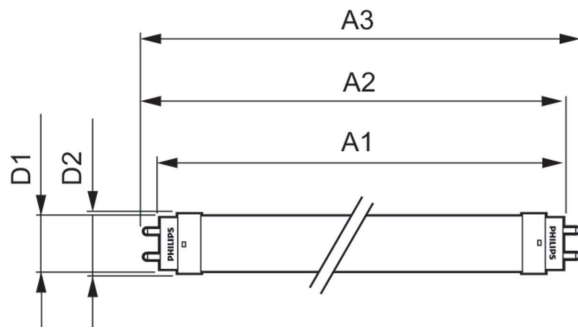
Bulb Material	Glass
Product Length	47-1/4 inch
Bulb Shape	T8
Approval and Application	
Energy Saving Product	Yes
Approval Marks	RoHS compliance UL certificate DLC compliance
Energy Consumption kWh/1000 h	- kWh

Product Data

Order product name	15T8/COR/48-850/MF21/G 10/1
--------------------	-----------------------------

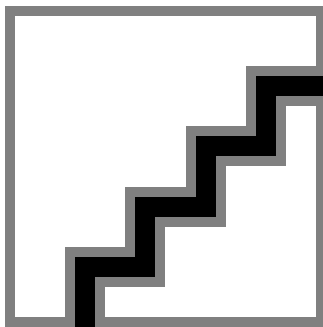
Full product name	15T8/COR/48-850/MF21/G 10/1
Order code	471771
Material Nr. (12NC)	929002395104
Numerator - Quantity Per Pack	1
EAN/UPC - Product/Case	046677471774
Numerator - Packs per outer box	10
EAN/UPC - Case	50046677471779

Dimensional drawing

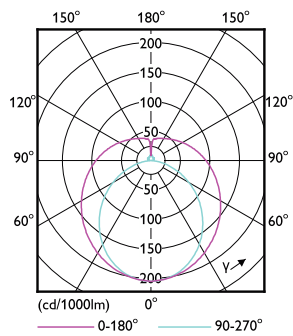


Product
15T8/COR/48-850/MF21/G 10/1

Photometric data

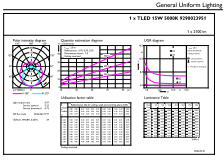


Spectral Power Distribution Colour - 15T8/COR/48-850/MF21/G 10/1



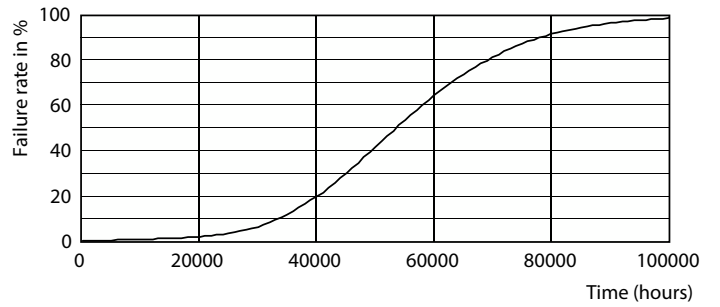
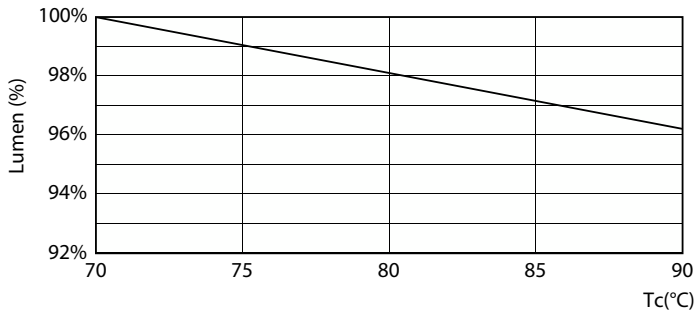
Light Distribution Diagram - 15T8/COR/48-850/MF21/G 10/1

Photometric data



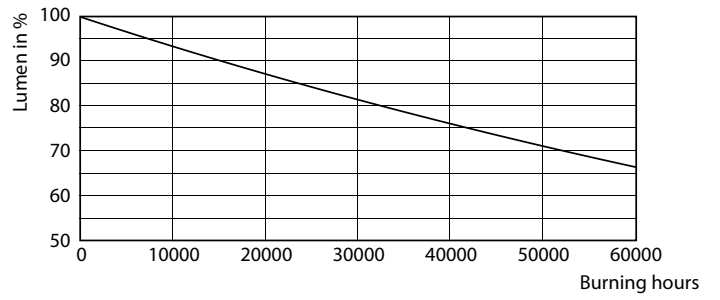
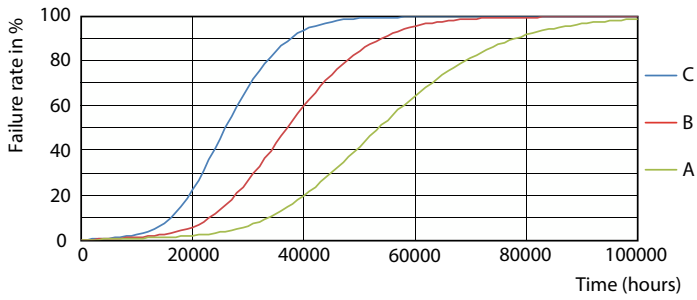
General uniform lighting - 15T8/COR/48-850/MF21/G 10/1

Lifetime



Lumen Maintenance Diagram - 15T8/COR/48-850/MF21/G 10/1

Life Expectancy Diagram - 15T8/COR/48-850/MF21/G 10/1

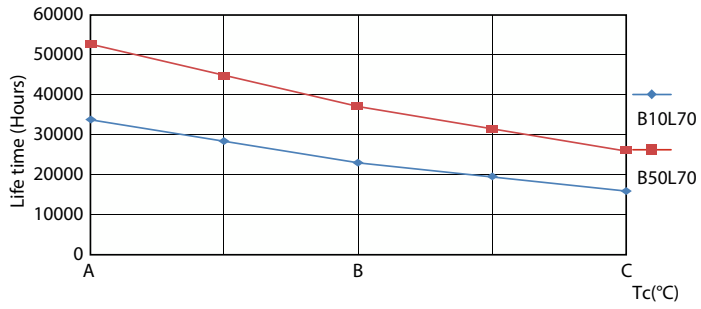


Life Expectancy Diagram - 15T8/COR/48-850/MF21/G 10/1

Lumen Maintenance Diagram - 15T8/COR/48-850/MF21/G 10/1

T8

Lifetime



Life Expectancy Diagram - 15T8/COR/48-850/MF21/G 10/1

