



MainsFit (UL Type-B) T5

14T5HE/COR/46-835/MF20/G 25/1

The MainsFit (UL Type-B) lamps are designed to be the perfect retrofit solution to move from traditional fluorescent lamps to energy saving LEDs. This ballast bypass lamp has everything needed built into the lamp with proven energy savings, long life, surge suppression and industry leading safety features. All lamps in the MainsFit family are double-ended to help simplify the installation. In addition, all lamps meet the Philips standards for light quality so that end users will be in a comfortable environment regardless of the MainsFit lamp type.

Product data

General Information		Operating and Electrical	
Cap-Base	G5	Line Frequency	50 to 60 Hz
Nominal lifetime	50,000 hour(s)	Input Frequency	50 to 60 Hz
Switching Cycle	50,000	Power Consumption	14 W
Lighting Technology	LED	Lamp Current (Max)	145 mA
EU RoHS compliant	Yes	Lamp Current (Min)	55 mA
Light Technical		Wattage Equivalent	28 W
Color Code	835 [CCT of 3500K]	Starting Time (Nom)	0.5 s
Beam Angle (Nom)	200 degree(s)	Warm-up time to 60% light	0.5 s
Luminous Flux	2,000 lm	Power Factor (Fraction)	0.9
Color Designation	White (WH)	Voltage (Nom)	120-277 V
Correlated Color Temperature (Nom)	3500 K	UL Type	UL Type B
Luminous Efficacy (rated) (Nom)	142.00 lm/W	Temperature	
Color Consistency	<6	Ambient temperature range	-4 °F to 113 °F
Color rendering index (CRI)	80	T-Case Maximum (Nom)	158 °F
LLMF At End Of Nominal Lifetime (Nom)	70 %		

MainsFit (UL Type-B) T5

Controls and Dimming

Dimmable	Limited
----------	---------

Mechanical and Housing

Bulb Finish	Frosted
Bulb Material	Glass
Product Length	47-1/4 inch
Bulb Shape	T5

Approval and Application

Energy Saving Product	Yes
Approval Marks	RoHS compliance UL certificate DLC compliance

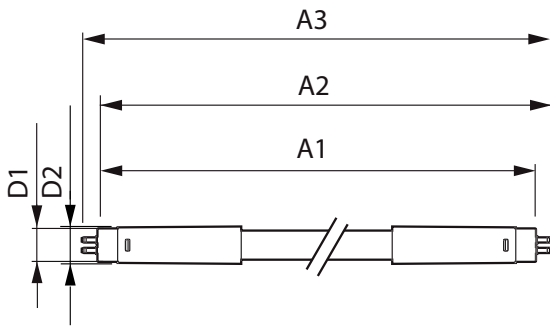
Application Conditions

can it be used in closed luminaires	Yes
-------------------------------------	-----

Product Data

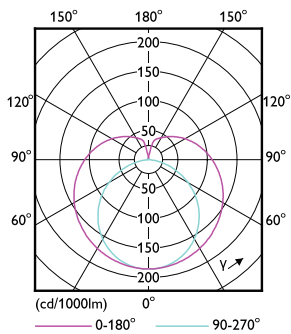
Order product name	14T5HE/COR/46-835/MF20/G 25/1
Full product name	14T5HE/COR/46-835/MF20/G 25/1
Order code	576207
Material Nr. (12NC)	929003123304
Numerator - Quantity Per Pack	1
EAN/UPC - Product/Case	046677576202
Numerator - Packs per outer box	25
EAN/UPC - Case	50046677576207

Dimensional drawing

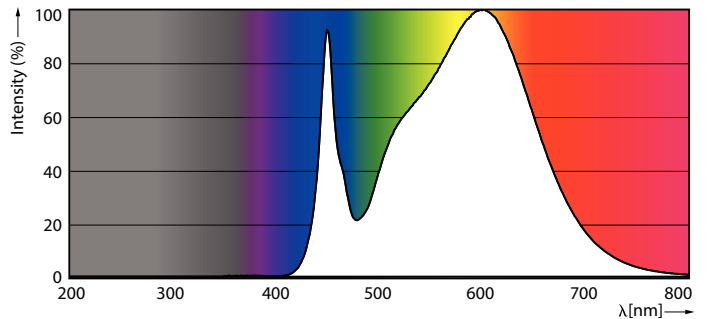


Product	D1	D2	A1	A2	A3
14T5HE/COR/46-835/MF20/G 25/1	5/8 inch	3/4 inch	45-1/4 inch	45-1/2 inch	45-13/16 inch

Photometric data



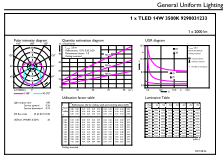
Light Distribution Diagram - 14T5HE/COR/46-835/MF20/G 25/1



Spectral Power Distribution Colour - 14T5HE/COR/46-835/MF20/G 25/1

MainsFit (UL Type-B) T5

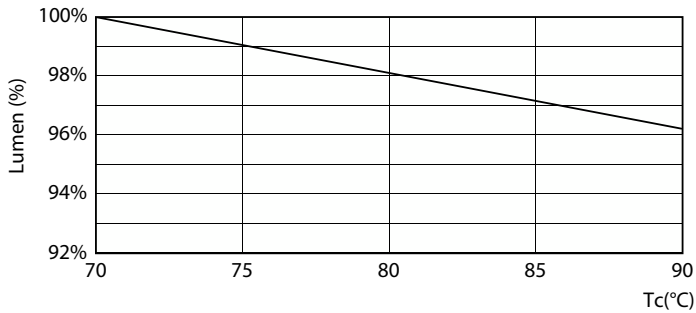
Photometric data



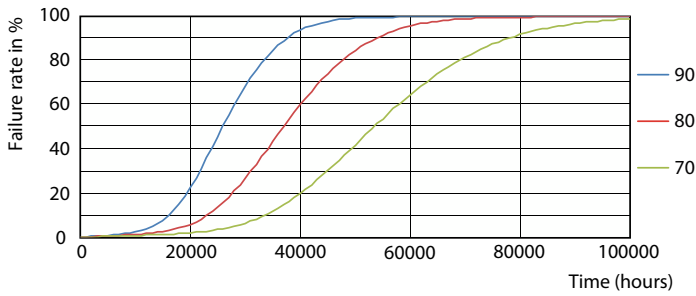
© Philips Lighting B.V. Page 1/1

General uniform lighting - 14T5HE/COR/46-835/MF20/G 25/1

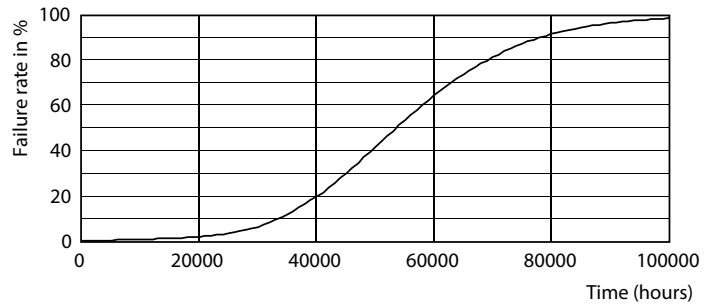
Lifetime



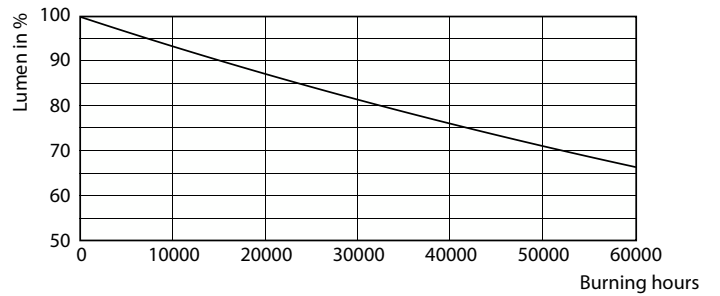
Lumen Maintenance Diagram - 14T5HE/COR/46-835/MF20/G 25/1



Life Expectancy Diagram - 14T5HE/COR/46-835/MF20/G 25/1



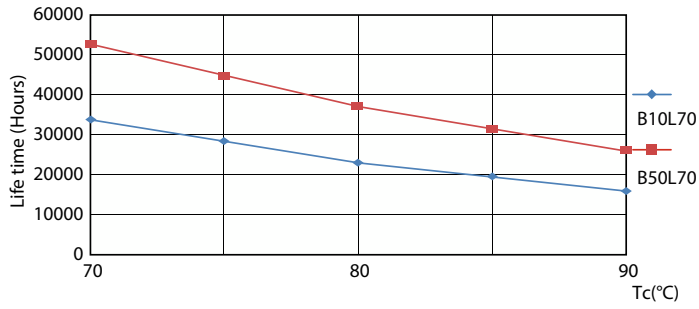
Life Expectancy Diagram - 14T5HE/COR/46-835/MF20/G 25/1



Lumen Maintenance Diagram - 14T5HE/COR/46-835/MF20/G 25/1

MainsFit (UL Type-B) T5

Lifetime



Life Expectancy Diagram - 14T5HE/COR/46-835/MF20/G 25/1

