



# InstantFit (UL Type-A) T5

## 24T5HO/COR/46-835/IF33/G/DIM 25/1

The InstantFit TLED lamps provide hassle-free installation with simple lamp-for-lamp replacements. They deliver what we promise, with at least 40% energy savings, flicker-free performance, and the life you would expect. Other lamps claim compatibility but only InstantFit (UL Type-A) has been proven to work with over 200 ballasts and drivers, delivering even light output, with proven energy savings and a long average lifetime. End users will be delighted being under these comfortable and high quality InstantFit lamps with no visible flicker and optimized optics. Energy managers will enjoy the InstantFit lamps too as they can count the savings delivered by our lamps. To enjoy more energy savings, the InstantFit lamps can be paired with the Advance TLED drivers to create a Type C system.

### Product data

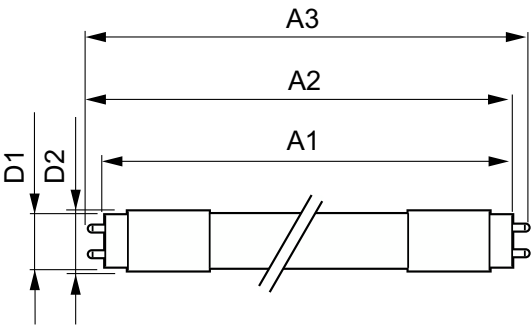
General Information		Color rendering index (CRI)	
Cap-Base	G5	80	
Nominal lifetime	50,000 hour(s)	LLMF At End Of Nominal Lifetime (Nom) 70 %	
Switching Cycle	50,000		
Lighting Technology	LED	Operating and Electrical	
EU RoHS compliant	Yes	Line Frequency	50 to 60 Hz
		Input Frequency	50 to 60 Hz
		Power Consumption	24 W
		Lamp Current (Max)	1,200 mA
		Lamp Current (Min)	30 mA
		Wattage Equivalent	54 W
		Starting Time (Nom)	0.5 s
		Warm-up time to 60% light	0.5 s
		Power Factor (Fraction)	0.9
		Voltage (Nom)	120-277, 347 V
Light Technical			
Color Code	835 [CCT of 3500K]		
Beam Angle (Nom)	200 degree(s)		
Luminous Flux	3,300 lm		
Color Designation	White (WH)		
Correlated Color Temperature (Nom)	3500 K		
Luminous Efficacy (rated) (Nom)	137.00 lm/W		
Color Consistency	<6		

InstantFit (UL Type-A) T5

UL Type	UL Type A
Temperature	
Ambient temperature range	-4 °F to 113 °F
T-Case Maximum (Nom)	158 °F
Controls and Dimming	
Dimmable	Only with specific dimmers
Mechanical and Housing	
Bulb Finish	Frosted
Bulb Material	Glass
Product Length	47-1/4 inch
Bulb Shape	T5
Approval and Application	
Energy Saving Product	Yes

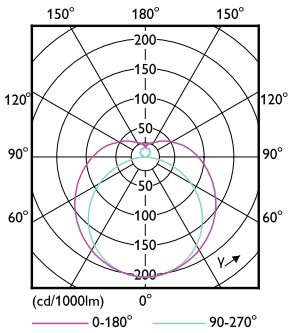
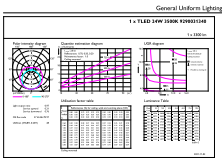
Approval Marks	RoHS compliance UL certificate DLC compliance
Application Conditions	
can it be used in closed luminaires	Yes
Product Data	
Order product name	24T5HO/COR/46-835/IF33/G/DIM 25/1
Full product name	24T5HO/COR/46-835/IF33/G/DIM 25/1
Order code	576710
Material Nr. (12NC)	929003134004
Numerator - Quantity Per Pack	1
EAN/UPC - Product/Case	046677576714
Numerator - Packs per outer box	25
EAN/UPC - Case	50046677576719

Dimensional drawing



Product	D1	D2	A1	A2	A3
24T5HO/COR/46-835/IF33/G/DIM 25/1	5/8 inch	3/4 inch	45-3/16 inch	45-1/2 inch	45-3/4 inch

Photometric data

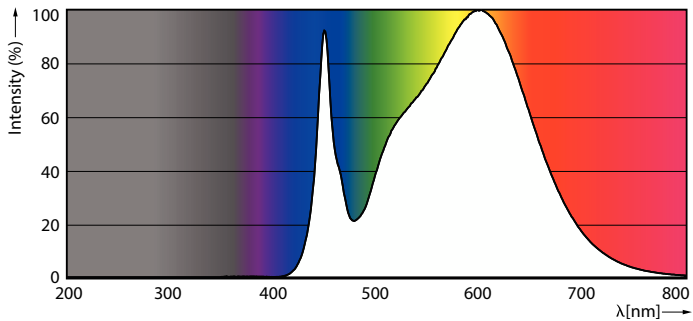


General uniform lighting - 24T5HO/COR/46-835/IF33/G/DIM 25/1

Light Distribution Diagram - 24T5HO/COR/46-835/IF33/G/DIM 25/1

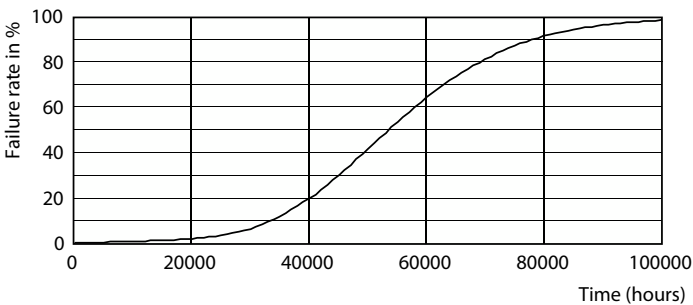
InstantFit (UL Type-A) T5

Photometric data

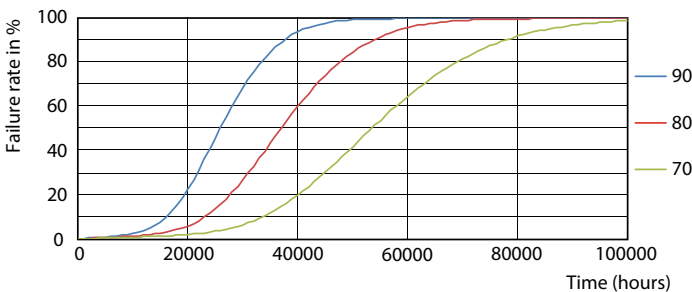


Spectral Power Distribution Colour - 24T5HO/COR/46-835/IF33/G/DIM 25/1

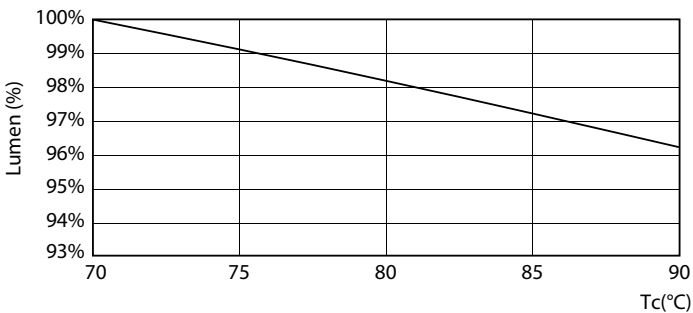
Lifetime



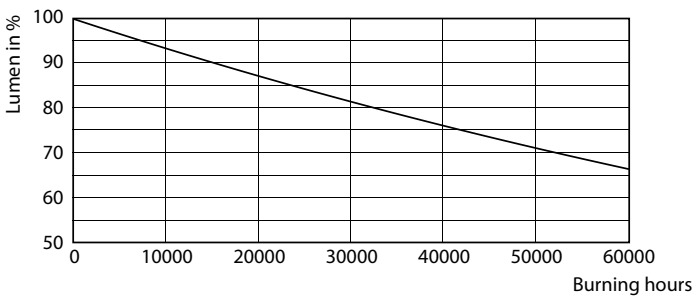
Life Expectancy Diagram - 24T5HO/COR/46-835/IF33/G/DIM 25/1



Life Expectancy Diagram - 24T5HO/COR/46-835/IF33/G/DIM 25/1



Lumen Maintenance Diagram - 24T5HO/COR/46-835/IF33/G/DIM 25/1



Lumen Maintenance Diagram - 24T5HO/COR/46-835/IF33/G/DIM 25/1

InstantFit (UL Type-A) T5

Lifetime



Life Expectancy Diagram - 24T5HO/COR/46-835/IF33/G/DIM 25/1

