



Corepro InstantFit (UL Type-A) T8

11.5T8/COR/48-840/IF21/G/DIM 25/1

The CorePro InstantFit LED lamps provide hassle-free installation with simple lamp-for-lamp replacements. They deliver what we promise, with at least 40% energy savings, flicker-free performance, and the life you would expect. Other lamps claim compatibility but only CorePro InstantFit (UL Type A) has been proven to work with over 200 ballasts and drivers, delivering even light output, with proven energy savings and a long average lifetime. End users will be delighted being under these comfortable and high quality CorePro InstantFit lamps with no visible flicker and optimized optics. Energy managers will enjoy these lamps too as they can count the savings delivered by our lamps. To enjoy more energy savings, the CorePro InstantFit lamps can be paired with the Advance TLED drivers to create a Type C system.

Product data

General Information		Color Consistency	
Cap-Base	G13 [Medium Bi-Pin Fluorescent]	Color Consistency	<6
Nominal lifetime	50,000 hour(s)	Color rendering index (CRI)	80
Switching Cycle	50,000	LLMF At End Of Nominal Lifetime (Nom)	70 %
Lighting Technology	LED	Operating and Electrical	
EU RoHS compliant	Yes	Line Frequency	25K to 105K Hz
Light Technical		Input Frequency	25K to 105K Hz
Color Code	840 [CCT of 4000K]	Power Consumption	11.5 W
Beam Angle (Nom)	240 degree(s)	Lamp Current (Max)	260 mA
Luminous Flux	2,100 lm	Lamp Current (Min)	80 mA
Color Designation	Cool White (CW)	Wattage Equivalent	32 W
Correlated Color Temperature (Nom)	4000 K	Starting Time (Nom)	0.5 s
Luminous Efficacy (rated) (Nom)	182.00 lm/W	Warm-up time to 60% light	0.5 s
		Power Factor (Fraction)	0.9

Corepro InstantFit (UL Type-A) T8

Voltage (Nom)	120-277 V
UL Type	UL Type A

Temperature

Ambient temperature range	-4 °F to 113 °F
T-Case Maximum (Nom)	104 °F

Controls and Dimming

Dimmable	No
----------	----

Mechanical and Housing

Bulb Finish	Frosted
Bulb Material	Glass
Product Length	47-1/4 inch
Bulb Shape	T8

Approval and Application

Energy Saving Product	Yes
-----------------------	-----

Approval Marks	RoHS compliance UL certificate DLC compliance
----------------	---

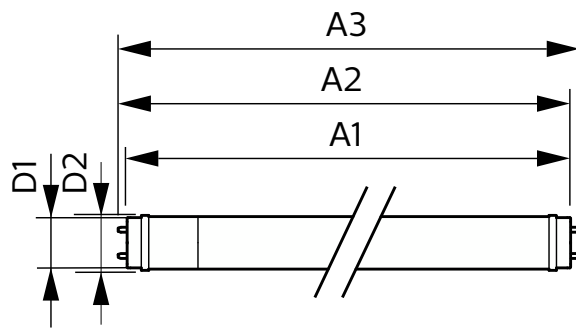
Application Conditions

can it be used in closed luminaires	Yes
-------------------------------------	-----

Product Data

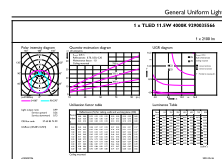
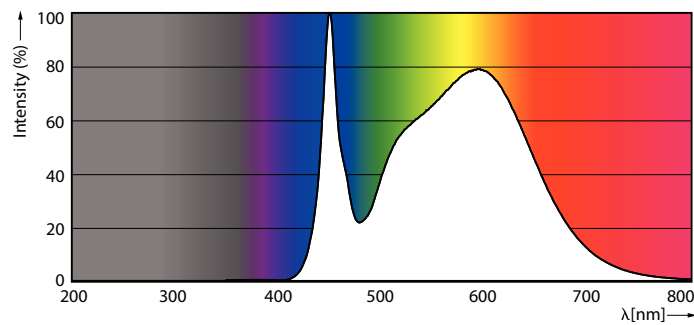
Order product name	11.5T8/COR/48-840/IF21/G/DIM 25/1
Full product name	11.5T8/COR/48-840/IF21/G/DIM 25/1
Order code	580274
Material Nr. (12NC)	929003556604
Numerator - Quantity Per Pack	1
EAN/UPC - Product/Case	046677580278
Numerator - Packs per outer box	25
EAN/UPC - Case	50046677580273

Dimensional drawing



Product	D1	D2	A1	A2	A3
11.5T8/COR/48-840/IF21/G/DIM 25/1	1-1/16 inch	1-1/16 inch	47-3/16 inch	47-1/2 inch	47-3/4 inch

Photometric data

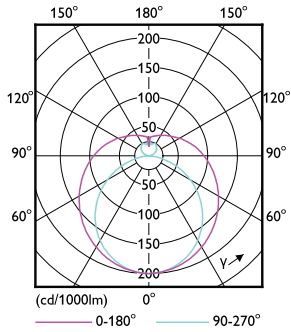


Spectral Power Distribution Colour - 11.5T8/COR/48-840/IF21/G/DIM 25/1

General uniform lighting - 11.5T8/COR/48-840/IF21/G/DIM 25/1

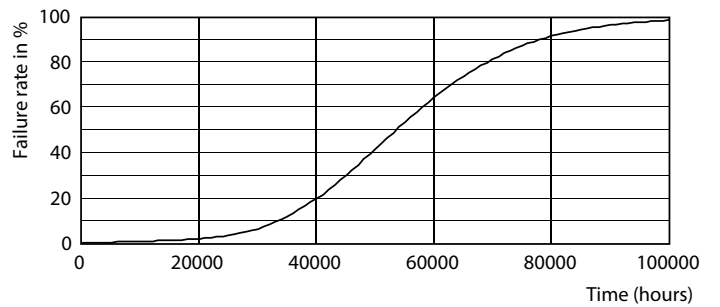
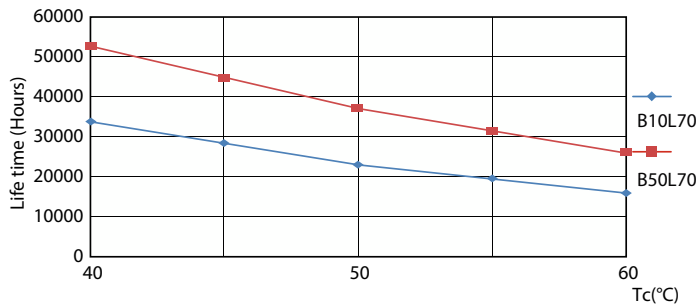
Corepro InstantFit (UL Type-A) T8

Photometric data



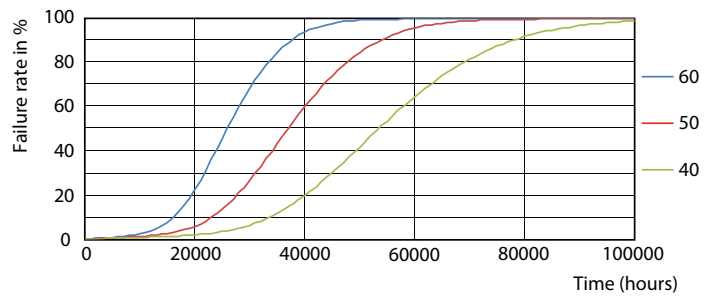
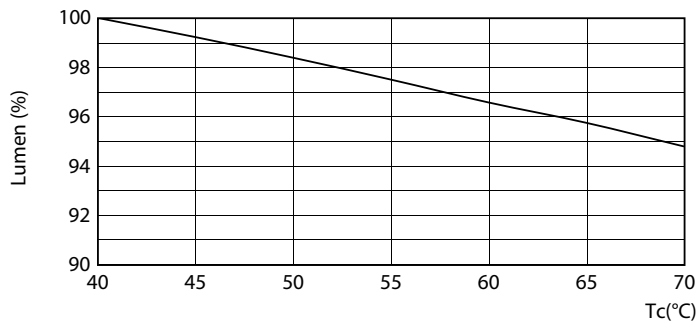
Light Distribution Diagram - 11.5T8/COR/48-840/IF21/G/DIM 25/1

Lifetime



Life Expectancy Diagram - 11.5T8/COR/48-840/IF21/G/DIM 25/1

Life Expectancy Diagram - 11.5T8/COR/48-840/IF21/G/DIM 25/1

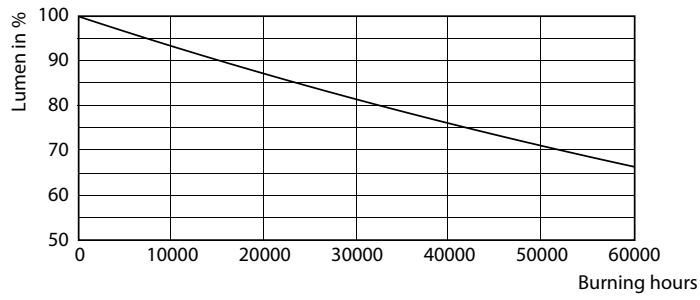


Lumen Maintenance Diagram - 11.5T8/COR/48-840/IF21/G/DIM 25/1

Life Expectancy Diagram - 11.5T8/COR/48-840/IF21/G/DIM 25/1

Corepro InstantFit (UL Type-A) T8

Lifetime



Lumen Maintenance Diagram - 11.5T8/COR/48-840/IF21/G/DIM 25/1

