



# PL-C/T

## 5.5PL-C/LED/13H/827/IF5/P/4P 20/1

Philips PLED 4-pin & 2-pin lamps are an affordable LED solution to replace compact fluorescent lamps. The product provides a natural lighting effect for use in many lighting applications, and provides instant energy savings, making them an environmentally-friendly solution. Available as replacements for 13W, 26W and 32W compact fluorescent lamps.

### Product data

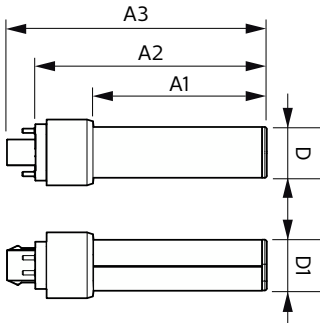
General Information		Electrical	
Cap-Base	G24Q [G24q]	Lamp Current (Max)	280 mA
Nominal lifetime	50,000 hour(s)	Lamp Current (Min)	130 mA
Switching Cycle	50,000	Starting Time (Nom)	0.5 s
Lighting Technology	LED	Warm-up time to 60% light	0.5 s
EU RoHS compliant	Yes	Power Factor (Fraction)	0.9
		Voltage (Nom)	14-60 V
		UL Type	Type A - works on ballast
Light Technical		Temperature	
Color Code	827 [CCT of 2700K]	Ambient temperature range	-4 °F to 113 °F
Beam Angle (Nom)	150 degree(s)	T-Case Maximum (Nom)	167 °F
Luminous Flux	520 lm		
Color Designation	Warm White (WW)	Controls and Dimming	
Correlated Color Temperature (Nom)	2700 K	Dimmable	Yes
Luminous Efficacy (rated) (Nom)	94.00 lm/W		
Color Consistency	<6	Mechanical and Housing	
Color rendering index (CRI)	82	Bulb Material	Plastic
LLMF At End Of Nominal Lifetime (Nom)	70 %	Product Length	5-9/16 inch
		Bulb Shape	PL-C
Operating and Electrical		Approval and Application	
Line Frequency	25000-100000 Hz	Energy Saving Product	Yes
Input Frequency	25000-100000 Hz		
Power Consumption	5.5 W		

# PL-C/T

Approval Marks	RoHS compliance UL certificate
Energy Consumption kWh/1000 h	- kWh
<b>Product Data</b>	
Order product name	5.5PL-C/LED/13H/827/IF5/P/4P 20/1
Full product name	5.5PL-C/LED/13H/827/IF5/P/4P 20/1
Order code	532390

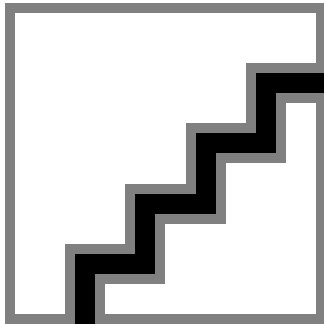
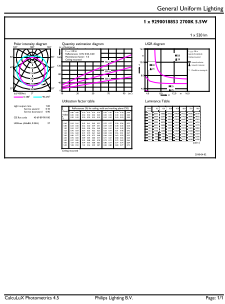
Material Nr. (12NC)	929001885304
Numerator - Quantity Per Pack	1
EAN/UPC - Product/Case	046677532390
Numerator - Packs per outer box	20
EAN/UPC - Case	50046677532395

## Dimensional drawing



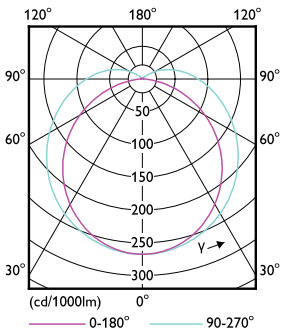
Product	D	D1	A1	A2	A3
5.5PL-C/LED/13H/827/IF5/P/4P 20/1	1-1/16 inch	1-1/16 inch	3-5/8 inch	4-13/16 inch	5-7/16 inch

## Photometric data



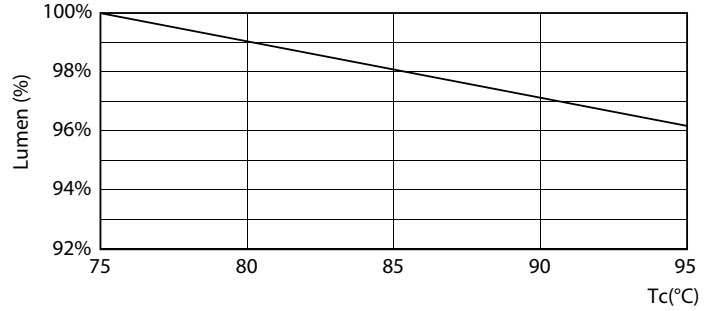
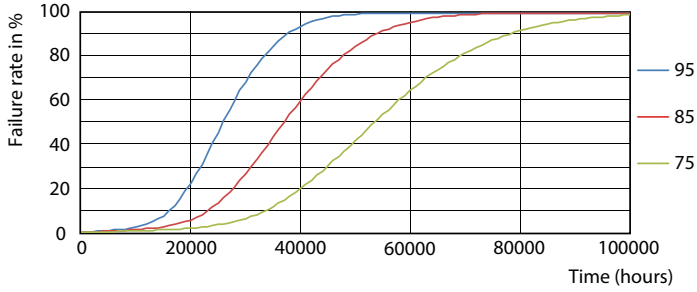
General uniform lighting - 5.5PL-C/LED/13H/827/IF5/P/4P 20/1

Spectral Power Distribution Colour - 5.5PL-C/LED/13H/827/IF5/P/4P 20/1



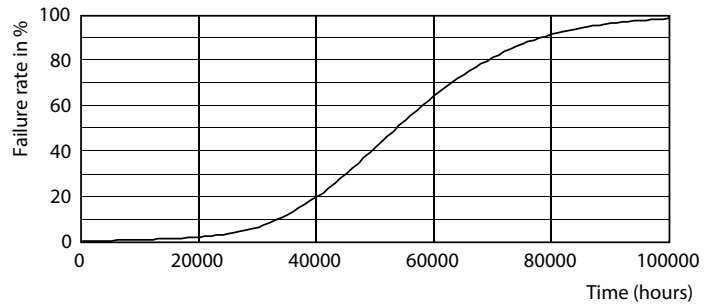
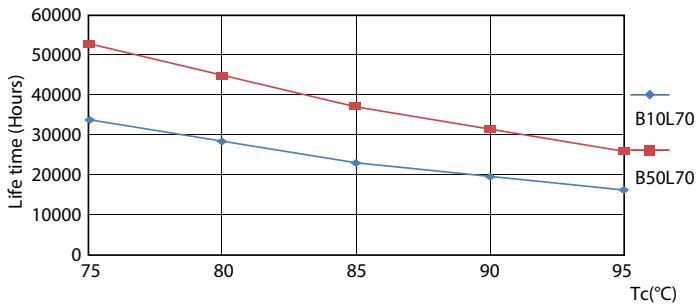
Light Distribution Diagram - 5.5PL-C/LED/13H/827/IF5/P/4P 20/1

Lifetime



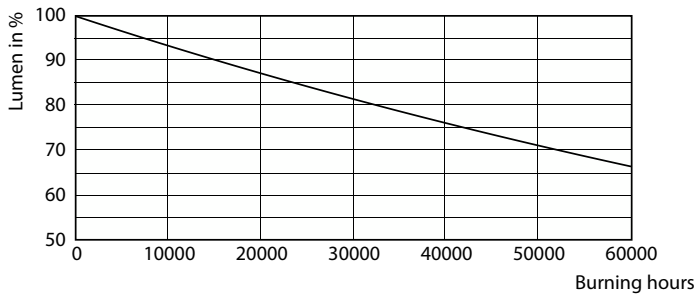
Life Expectancy Diagram - 5.5PL-C/LED/13H/827/IF5/P/4P 20/1

Lumen Maintenance Diagram - 5.5PL-C/LED/13H/827/IF5/P/4P 20/1



Life Expectancy Diagram - 5.5PL-C/LED/13H/827/IF5/P/4P 20/1

Life Expectancy Diagram - 5.5PL-C/LED/13H/827/IF5/P/4P 20/1



Lumen Maintenance Diagram - 5.5PL-C/LED/13H/827/IF5/P/4P 20/1

