



PL-C/T

5.5PL-C/LED/13H/830/IF5/P/4P 20/1

Philips PLED 4-pin & 2-pin lamps are an affordable LED solution to replace compact fluorescent lamps. The product provides a natural lighting effect for use in many lighting applications, and provides instant energy savings, making them an environmentally-friendly solution. Available as replacements for 13W, 26W and 32W compact fluorescent lamps.

Product data

General Information		Temperature	
Cap-Base	G24Q [G24q]	Lamp Current (Max)	280 mA
Nominal lifetime	50,000 hour(s)	Lamp Current (Min)	130 mA
Switching Cycle	50,000	Wattage Equivalent	13 W
Lighting Technology	LED	Starting Time (Nom)	0.5 s
EU RoHS compliant	Yes	Warm-up time to 60% light	0.5 s
		Power Factor (Fraction)	0.9
		Voltage (Nom)	14-60 V
		UL Type	UL Type A
Light Technical		Controls and Dimming	
Color Code	830 [CCT of 3000K]	Dimmable	Yes
Beam Angle (Nom)	150 degree(s)		
Luminous Flux	550 lm	Mechanical and Housing	
Color Designation	White (WH)	Bulb Finish	Frosted
Correlated Color Temperature (Nom)	3000 K	Bulb Material	Plastic
Luminous Efficacy (rated) (Nom)	100.00 lm/W	Product Length	5-9/16 inch
Color Consistency	<6	Bulb Shape	PL-C
Color rendering index (CRI)	82		
LLMF At End Of Nominal Lifetime (Nom)	70 %		
Operating and Electrical			
Line Frequency	25000-100000 Hz		
Input Frequency	25000-100000 Hz		
Power Consumption	5.5 W		

PL-C/T

Approval and Application

Energy Saving Product	Yes
Approval Marks	RoHS compliance UL certificate
Energy Consumption kWh/1000 h	- kWh

Application Conditions

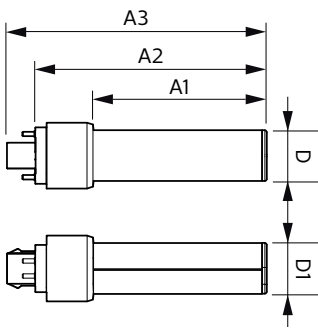
can it be used in closed luminaires	Yes
-------------------------------------	-----

Product Data

Order product name	5.5PL-C/LED/13H/830/IF5/P/4P 20/1
--------------------	-----------------------------------

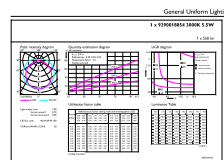
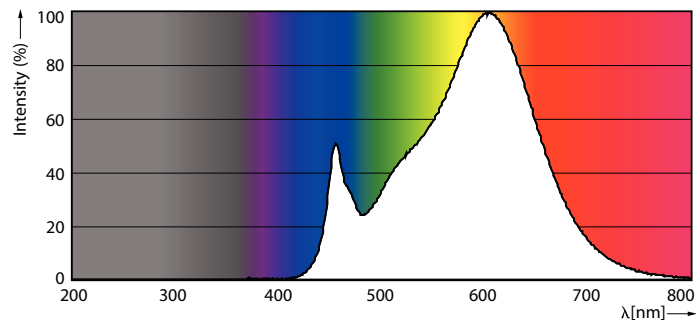
Full product name	5.5PL-C/LED/13H/830/IF5/P/4P 20/1
Order code	532408
Material Nr. (12NC)	929001885404
Numerator - Quantity Per Pack	1
EAN/UPC - Product/Case	046677532406
Numerator - Packs per outer box	20
EAN/UPC - Case	50046677532401

Dimensional drawing



Product	D	D1	A1	A2	A3
5.5PL-C/LED/13H/830/IF5/P/4P 20/1	1-1/16 inch	1-1/16 inch	3-5/8 inch	4-13/16 inch	5-7/16 inch

Photometric data

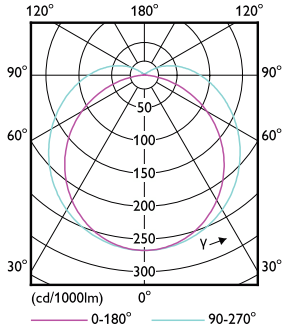


OSRAM KÖNIGSWALD U | Philips Lighting NV | Page 1/1

Spectral Power Distribution Colour - 5.5PL-C/LED/13H/830/IF5/P/4P 20/1

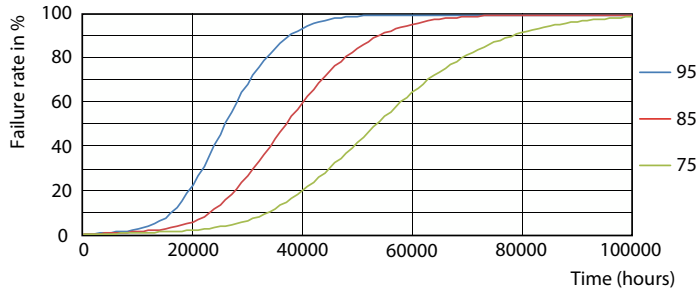
General uniform lighting - 5.5PL-C/LED/13H/830/IF5/P/4P 20/1

Photometric data

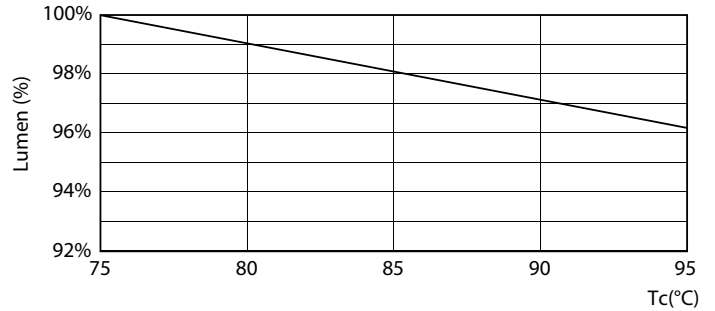


Light Distribution Diagram - 5.5PL-C/LED/13H/830/IF5/P/4P 20/1

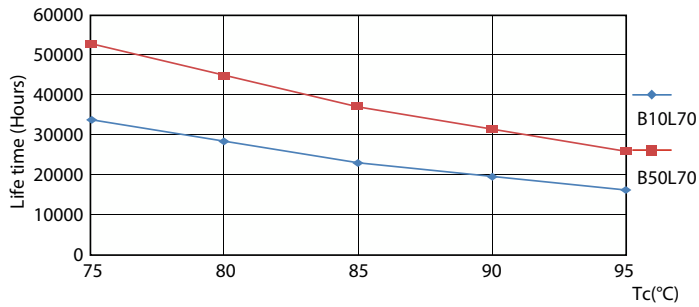
Lifetime



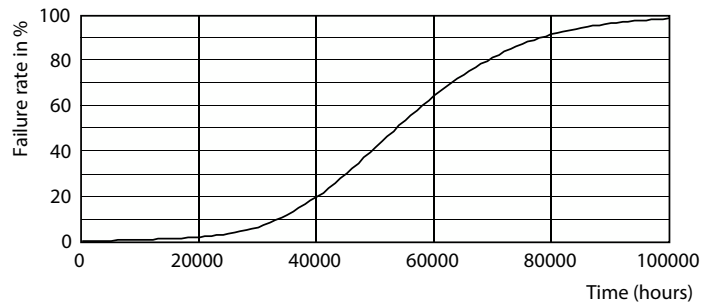
Life Expectancy Diagram - 5.5PL-C/LED/13H/830/IF5/P/4P 20/1



Lumen Maintenance Diagram - 5.5PL-C/LED/13H/830/IF5/P/4P 20/1



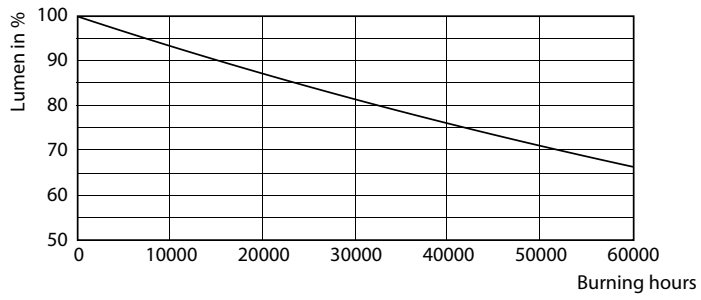
Life Expectancy Diagram - 5.5PL-C/LED/13H/830/IF5/P/4P 20/1



Life Expectancy Diagram - 5.5PL-C/LED/13H/830/IF5/P/4P 20/1

PL-C/T

Lifetime



Lumen Maintenance Diagram - 5.5PL-C/LED/13H/830/IF5/P/4P 20/1

