



PL-C/T

5.5PL-C/LED/13H/840/IF5/P/4P 20/1

Philips PLED 4-pin & 2-pin lamps are an affordable LED solution to replace compact fluorescent lamps. The product provides a natural lighting effect for use in many lighting applications, and provides instant energy savings, making them an environmentally-friendly solution. Available as replacements for 13W, 26W and 32W compact fluorescent lamps.

Product data

| General Information | |
|---------------------------------------|--------------------|
| Cap-Base | G24Q [G24q] |
| Nominal lifetime | 50,000 hour(s) |
| Switching Cycle | 50,000 |
| Lighting Technology | LED |
| EU RoHS compliant | Yes |
| Light Technical | |
| Color Code | 840 [CCT of 4000K] |
| Beam Angle (Nom) | 150 degree(s) |
| Luminous Flux | 580 lm |
| Color Designation | Cool White (CW) |
| Correlated Color Temperature (Nom) | 4000 K |
| Luminous Efficacy (rated) (Nom) | 105.00 lm/W |
| Color Consistency | <6 |
| Color rendering index (CRI) | 82 |
| LLMF At End Of Nominal Lifetime (Nom) | 70 % |
| Operating and Electrical | |
| Line Frequency | 25000-100000 Hz |
| Input Frequency | 25000-100000 Hz |
| Power Consumption | 5.5 W |

| | |
|---------------------------|-----------|
| Lamp Current (Max) | 280 mA |
| Lamp Current (Min) | 130 mA |
| Wattage Equivalent | 13 W |
| Starting Time (Nom) | 0.5 s |
| Warm-up time to 60% light | 0.5 s |
| Power Factor (Fraction) | 0.9 |
| Voltage (Nom) | 14-60 V |
| UL Type | UL Type A |

| Temperature | |
|---------------------------|-----------------|
| Ambient temperature range | -4 °F to 113 °F |
| T-Case Maximum (Nom) | 167 °F |

| Controls and Dimming | |
|----------------------|-----|
| Dimmable | Yes |

| Mechanical and Housing | |
|------------------------|-------------|
| Bulb Finish | Frosted |
| Bulb Material | Plastic |
| Product Length | 5-9/16 inch |
| Bulb Shape | PL-C |

PL-C/T

Approval and Application

| | |
|-------------------------------|--------------------------------|
| Energy Saving Product | Yes |
| Approval Marks | RoHS compliance UL certificate |
| Energy Consumption kWh/1000 h | - kWh |

Application Conditions

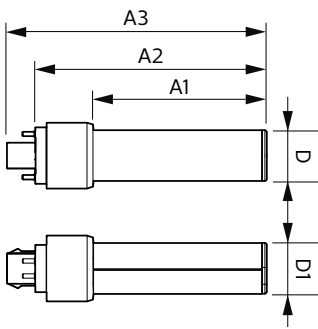
| | |
|-------------------------------------|-----|
| can it be used in closed luminaires | Yes |
|-------------------------------------|-----|

Product Data

| | |
|--------------------|-----------------------------------|
| Order product name | 5.5PL-C/LED/13H/840/IF5/P/4P 20/1 |
|--------------------|-----------------------------------|

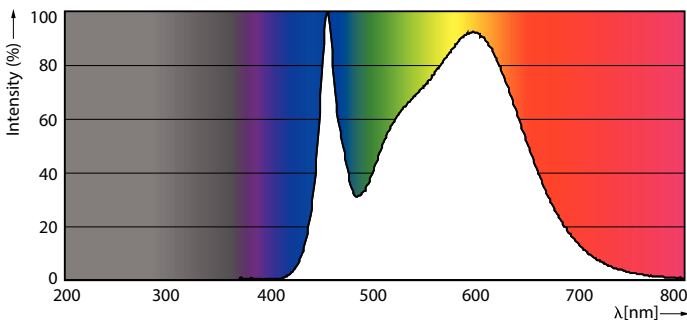
| | |
|---------------------------------|-----------------------------------|
| Full product name | 5.5PL-C/LED/13H/840/IF5/P/4P 20/1 |
| Order code | 532424 |
| Material Nr. (12NC) | 929001885604 |
| Numerator - Quantity Per Pack | 1 |
| EAN/UPC - Product/Case | 046677532420 |
| Numerator - Packs per outer box | 20 |
| EAN/UPC - Case | 50046677532425 |

Dimensional drawing

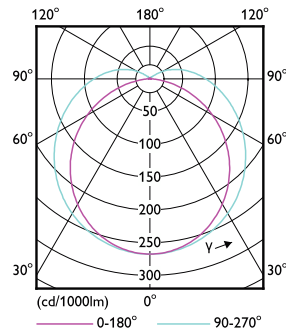


| Product | D | D1 | A1 | A2 | A3 |
|-----------------------------------|-------------|-------------|------------|--------------|-------------|
| 5.5PL-C/LED/13H/840/IF5/P/4P 20/1 | 1-1/16 inch | 1-1/16 inch | 3-5/8 inch | 4-13/16 inch | 5-7/16 inch |

Photometric data

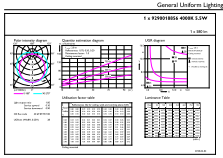


Spectral Power Distribution Colour - 5.5PL-C/LED/13H/840/IF5/P/4P 20/1



Light Distribution Diagram - 5.5PL-C/LED/13H/840/IF5/P/4P 20/1

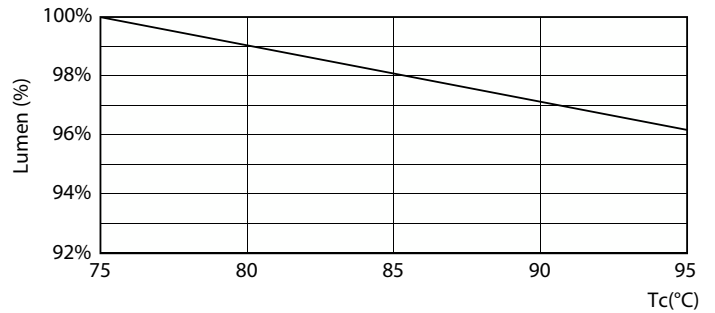
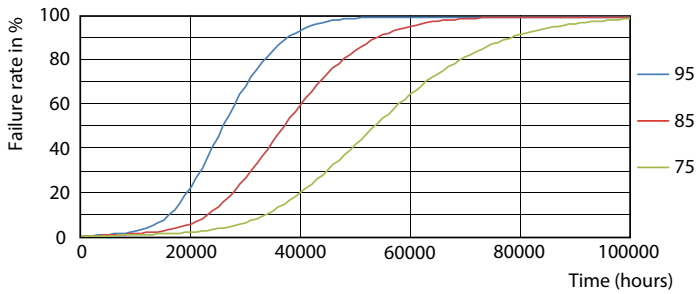
Photometric data



© 2023 Philips Lighting B.V. Page 10

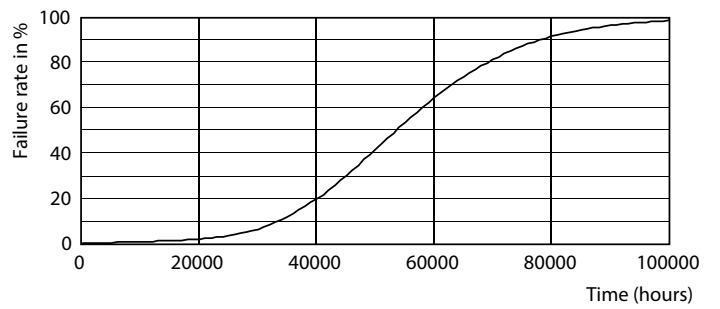
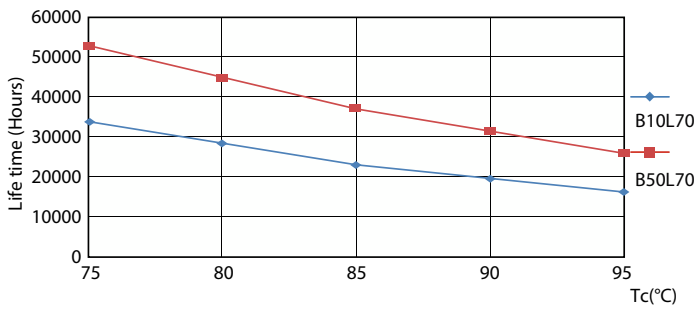
General uniform lighting - 5.5PL-C/LED/13H/840/IF5/P/4P 20/1

Lifetime



Life Expectancy Diagram - 5.5PL-C/LED/13H/840/IF5/P/4P 20/1

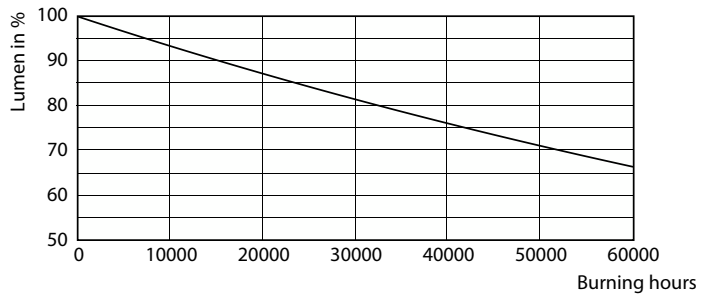
Lumen Maintenance Diagram - 5.5PL-C/LED/13H/840/IF5/P/4P 20/1



Life Expectancy Diagram - 5.5PL-C/LED/13H/840/IF5/P/4P 20/1

Life Expectancy Diagram - 5.5PL-C/LED/13H/840/IF5/P/4P 20/1

Lifetime



Lumen Maintenance Diagram - 5.5PL-C/LED/13H/840/IF5/P/4P 20/1

